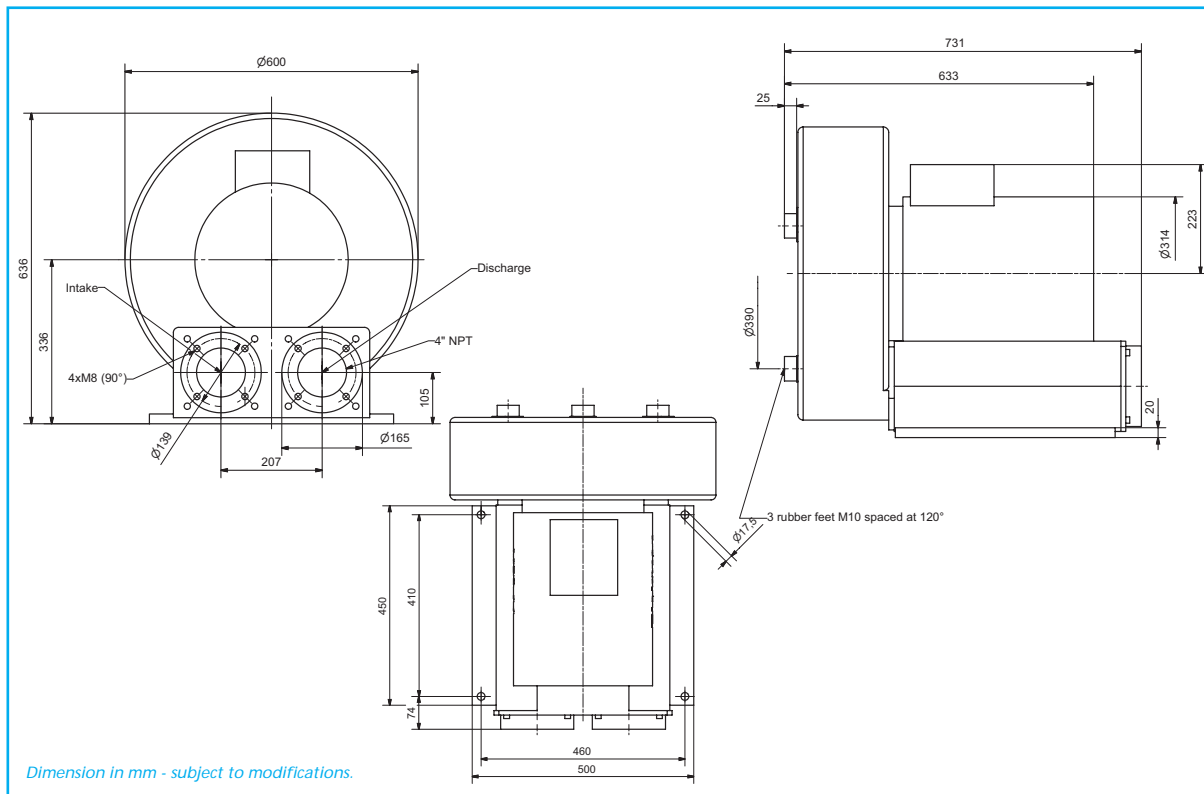
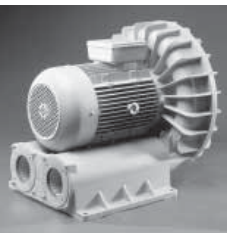


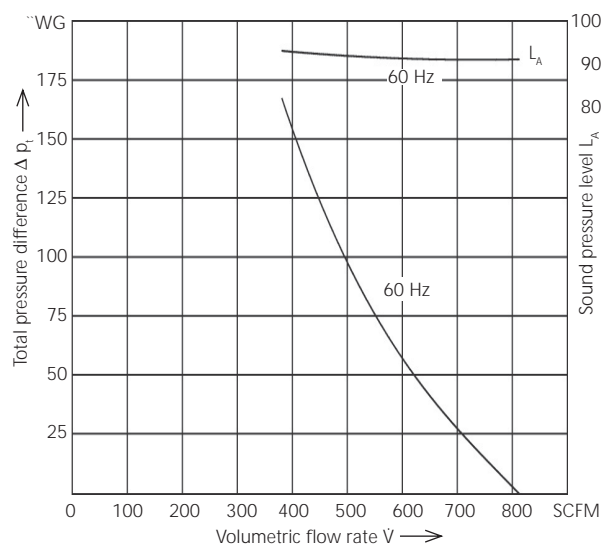
SD 140 VFD 14



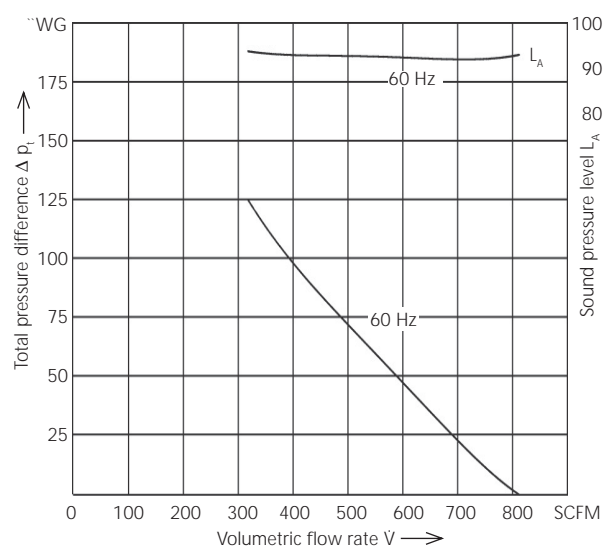
Delivery includes inlet and outlet flanges NPT 4".

Type	Maximum performance when used as blower			Maximum performance when used as extractor		Motor ratings				Weight
	Frequency	\dot{V} max	Δp_i max.	\dot{V} max.	Δp_i max.	Rated output	Voltage	Current	RPM	
	Hz	SCFM	"WG	SCFM	"WG	hp	V	Amp.	min ⁻¹	lb
SD 140 VFD 14	60	812	164	812	124	30,5	230/460	66/33	3540	386

Pressure



Vacuum



Technical and constructional subject to change.

Elektor
airsystems gmbh

Richard-Hirschmann-Straße 12
73728 Esslingen/Neckar
Germany
sales@elektor.com
www.elektor.com

FE
FUJIELECTRIC CORPORATION OF AMERICA

Park 80 West Plaza II
USA-Saddle Brook, NJ 07663
fujirc@fecoa.fujielectric.com
www.fujielectric.com