

Refrigeration - Unit Heaters - Space Heaters

Features:

Used on many popular commercial condensing units (Copeland, Tecumseh, Hussmann, Tyler, etc.) as well as unit cooler fans and blowers, refrigeration cabinets; also used on unit heaters, space heaters, remote air conditioners, blower units and other air moving applications. 4 ratings replace 21 of G.E.'s 21/29 frame designs.

- All angle sleeve bearings
- Auto protector
- Base and mounting clamps included
- Grommeted lead exit
- Mechanically reversible in the field (both rotations stocked)
- Open enclosure
- Shaded pole
- UL and C.S.A. approved
- 3/8" shaft diameter, 1/2" adapter included
- 2-1/4" rubber rings For base mounting
- 30" color coded leads
- 42 Frame (5.0" Dia.)
- 60 HZ



RF4400

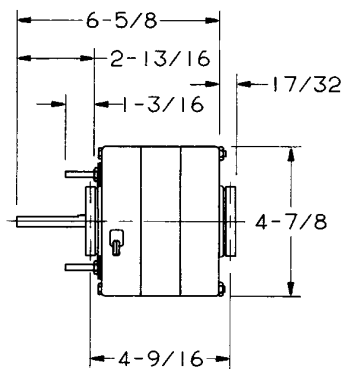
HP	RPM	Voltage	Amps	Frame	Stock Number	Rotation*	Conn. Dia.	Notes
1/10	1550	115/208-230	4.0/2.0	42Y	RF4400	CCW	46	
1/10	1550	115/208-230	4.0/2.0	42Y	RF4401	CW	47	
1/10	1050	115/208-230	4.0/2.0	42Y	RF6402	CCW	46	
1/10	1050	115/208-230	4.0/2.0	42Y	RF6403	CW	47	

Notes:

*Rotation viewed from opposite shaft end

Previous stock numbers with "X" suffix are the same as current models

Approximate Dimensions



4 mounting bolts 3-1/2 dia. B.C.
(Mounting Washers and Nuts Included)