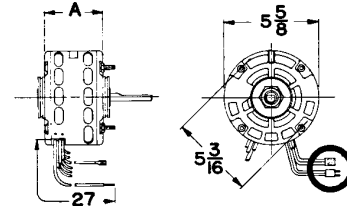


5-5/8" Diameter Stock Motors

Direct Drive Fan & Blower Motors

**Permanent Split Capacitor – Energy Efficient, Electrically Reversible
Sleeve & Ball Bearing – Continuous Duty, Air Over**

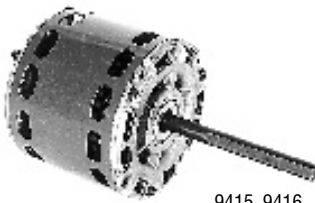
OEM replacement for Bard, Chrysler, York, Armstrong, Johnson, Janitrol, Bohn, Lennox, Copeland, Fedders, Heil Quaker, American Standard, Bryant, Westinghouse, Carrier, Peerless and others.



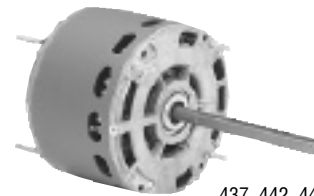
694, 695, 696, 697,
698, 699, 701, 702



117
(Lennox)



9415, 9416
9417, 9418
(Rheem)



437, 442, 444, 445
443 (Carrier)

SINGLE AND TWO SPEED – ELECTRICALLY REVERSIBLE

| Stock No. | Hp | Volts | RPM** | Amps | Speeds | Capacitor | Const. | Shaft Diameter | | Iron Stack | Connection Diagram No.* | Notes |
|-----------|----------|---------|-------|----------|--------|-------------|-------------|----------------|-------------|------------|-------------------------|--------------|
| | | | | | | | | "A" | & Length | | | |
| 9415 | 1/8-1/10 | 208-230 | 825 | 1.5 | 2 | 5MFD-370V | Open | 5-1/2 | 1/2 x 2-3/4 | 1-3/4 | 139u | 1 |
| 9416 | 1/4-1/5 | 208-230 | 825 | 1.8 | 2 | 7.5MFD-370V | Open | 5-1/2 | 1/2 x 3-1/4 | 2 | 139u | 1 |
| 9417 | 1/3-1/4 | 208-230 | 825 | 2.4 | 2 | 10MFD-370V | Open | 5-1/2 | 1/2 x 2-1/4 | 2 | 139u | 1 |
| 117 | 1/3 | 208-230 | 825 | 2.0 | 1 | 10MFD-370V | Open | 6 | 1/2 x 6 | 2-1/2 | 17u | 1,2,3 |
| 9418 | 1/2 | 208-230 | 825 | 3.1 | 1 | 15MFD-370V | Open | 5-3/4 | 1/2 x 3-1/4 | 2-1/2 | 140u | Discontinued |
| 442 | 1/6 | 208-230 | 1075 | 1.1 | 1 | 5MFD-370V | Open | 3-1/2 | 1/2 x 5-1/2 | 1 | 17u | |
| 694 | 1/4-1/6 | 115 | 1075 | 3.8-2.3 | 2 | 7.5MFD-370V | Open | 3-3/4 | 1/2 x 6 | 1-1/4 | 41u | |
| 695 | 1/4-1/6 | 208-230 | 1075 | 1.6-1.0 | 2 | 5MFD-370V | Open | 3-3/4 | 1/2 x 6 | 1-1/4 | 41u | |
| 437 | 1/4 | 208-230 | 1075 | 1.5 | 1 | 5MFD-370V | Closed L.E. | 3-3/4 | 1/2 x 2-3/4 | 1-1/4 | 17u | |
| 443 | 1/4 | 208-230 | 1075 | 1.6 | 1 | 5MFD-370V | Open | 4 | 1/2 x 5-1/2 | 1-1/4 | 17u | 1 |
| 696 | 1/3-1/4 | 115 | 1075 | 5.7-4.1 | 2 | 7.5MFD-370V | Open | 4-1/4 | 1/2 x 6 | 1-3/4 | 41u | |
| 697 | 1/3-1/4 | 208-230 | 1075 | 2.8-2.0 | 2 | 5MFD-370V | Open | 4 | 1/2 x 6 | 1-1/2 | 41u | |
| 444 | 1/3 | 208-230 | 1075 | 2.0 | 1 | 7.5MFD-370V | Open | 4 | 1/2 x 5-1/2 | 1-1/2 | 17u | |
| 698 | 1/2-1/3 | 115 | 1075 | 7.4-4.5 | 2 | 10MFD-370V | Open | 4-3/4 | 1/2 x 6 | 2-1/4 | 41u | |
| 699 | 1/2-1/3 | 208-230 | 1075 | 3.1-2.1 | 2 | 10MFD-370V | Open | 4-3/4 | 1/2 x 6 | 2 | 41u | |
| 445 | 1/2 | 208-230 | 1075 | 2.8 | 1 | 7.5MFD-370V | Open | 5 | 1/2 x 5-1/2 | 2-1/4 | 17u | |
| 701 | 3/4-1/2 | 115 | 1075 | 10.3-6.8 | 2 | 15MFD-370V | Open | 5-3/4 | 1/2 x 6 | 2-1/2 | 41u | |
| 702 | 3/4-1/2 | 208-230 | 1075 | 4.6-3.5 | 2 | 10MFD-370V | Open | 5-1/4 | 1/2 x 6 | 2-1/2 | 41u | |

Notes:

1. Special OEM Replacement Motor (See Pages 97-122)
2. Resilient Mounting Rings Included
3. Ball Bearings

*See Pages 160-163 for Connection Diagram

**Approx 150 RPM between speeds

ORM1058