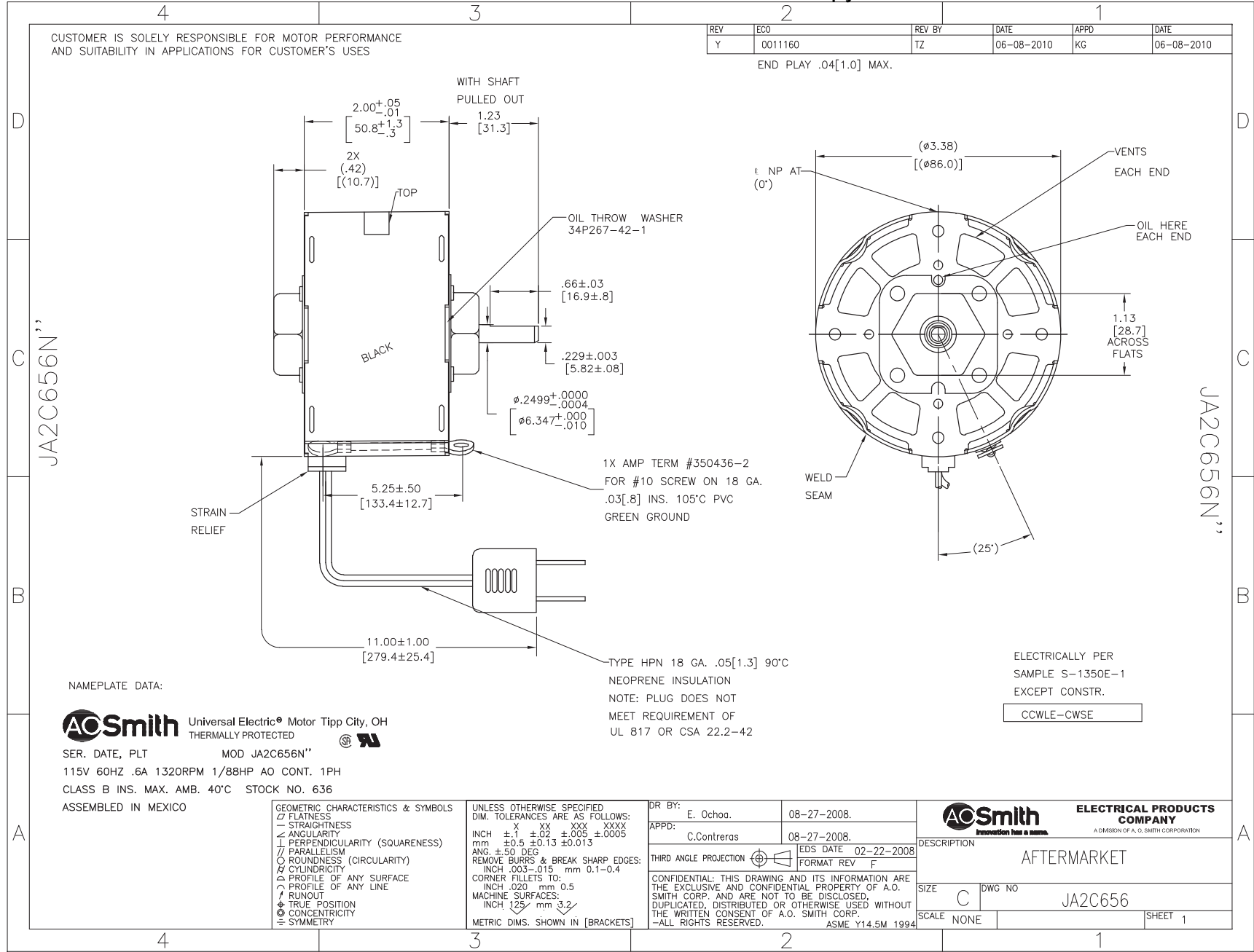


Uncontrolled Copy



REV	ECO	REV BY	DATE	APPD	DATE
Y	0011160	TZ	06-08-2010	KG	06-08-2010

END PLAY .04[1.0] MAX.

CUSTOMER IS SOLELY RESPONSIBLE FOR MOTOR PERFORMANCE AND SUITABILITY IN APPLICATIONS FOR CUSTOMER'S USES

JA2C656N"

JA2C656N"

NAMEPLATE DATA:

AC Smith Universal Electric® Motor Tipp City, OH
 THERMALLY PROTECTED

SER. DATE, PLT MOD JA2C656N"
 115V 60HZ .6A 1320RPM 1/88HP AO CONT. 1PH
 CLASS B INS. MAX. AMB. 40°C STOCK NO. 636
 ASSEMBLED IN MEXICO

1X AMP TERM #350436-2
 FOR #10 SCREW ON 18 GA.
 .03[.8] INS. 105°C PVC
 GREEN GROUND

TYPE HPN 18 GA. .05[1.3] 90°C
 NEOPRENE INSULATION
 NOTE: PLUG DOES NOT
 MEET REQUIREMENT OF
 UL 817 OR CSA 22.2-42

ELECTRICALLY PER
 SAMPLE S-1350E-1
 EXCEPT CONSTR.

CCWLE-CWSE

GEOMETRIC CHARACTERISTICS & SYMBOLS
 ▭ FLATNESS
 — STRAIGHTNESS
 ∠ ANGULARITY
 ⊥ PERPENDICULARITY (SQUARENESS)
 // PARALLELISM
 ○ ROUNDNESS (CIRCULARITY)
 ∅ CYLINDRICITY
 △ PROFILE OF ANY SURFACE
 ∇ PROFILE OF ANY LINE
 ↗ RUNOUT
 ⊕ TRUE POSITION
 ⊙ CONCENTRICITY
 ≡ SYMMETRY

UNLESS OTHERWISE SPECIFIED
 DIM. TOLERANCES ARE AS FOLLOWS:
 INCH ±.1 ±.02 ±.005 ±.0005
 mm ±0.5 ±0.13 ±0.013
 ANG. ±.50 DEG
 REMOVE BURRS & BREAK SHARP EDGES:
 INCH .003-.015 mm 0.1-0.4
 CORNER FILLETS TO:
 INCH .020 mm 0.5
 MACHINE SURFACES:
 INCH 125 mm 3.2
 METRIC DIMS. SHOWN IN [BRACKETS]

DR BY:	E. Ochoa.	08-27-2008.
APPD:	C.Contreras	08-27-2008.
THIRD ANGLE PROJECTION	EDS DATE 02-22-2008 FORMAT REV F	
CONFIDENTIAL: THIS DRAWING AND ITS INFORMATION ARE THE EXCLUSIVE AND CONFIDENTIAL PROPERTY OF A.O. SMITH CORP. AND ARE NOT TO BE DISCLOSED, DUPLICATED, DISTRIBUTED OR OTHERWISE USED WITHOUT THE WRITTEN CONSENT OF A.O. SMITH CORP. -ALL RIGHTS RESERVED. ASME Y14.5M 1994		

AC Smith Innovation has a name.		ELECTRICAL PRODUCTS COMPANY A DIVISION OF A. O. SMITH CORPORATION	
DESCRIPTION AFTERMARKET			
SIZE	C	DWG NO	JA2C656
SCALE	NONE	SHEET	1