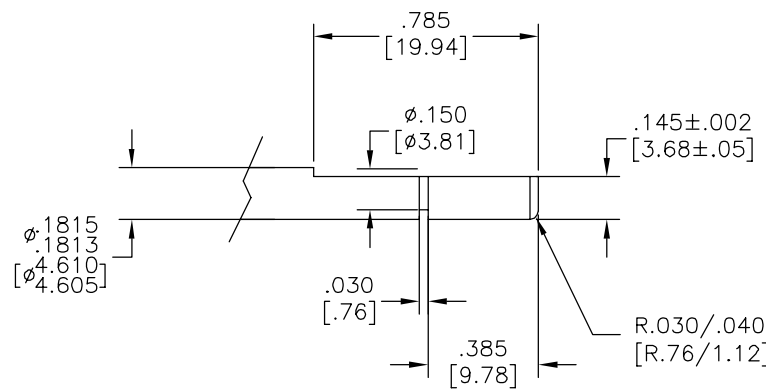
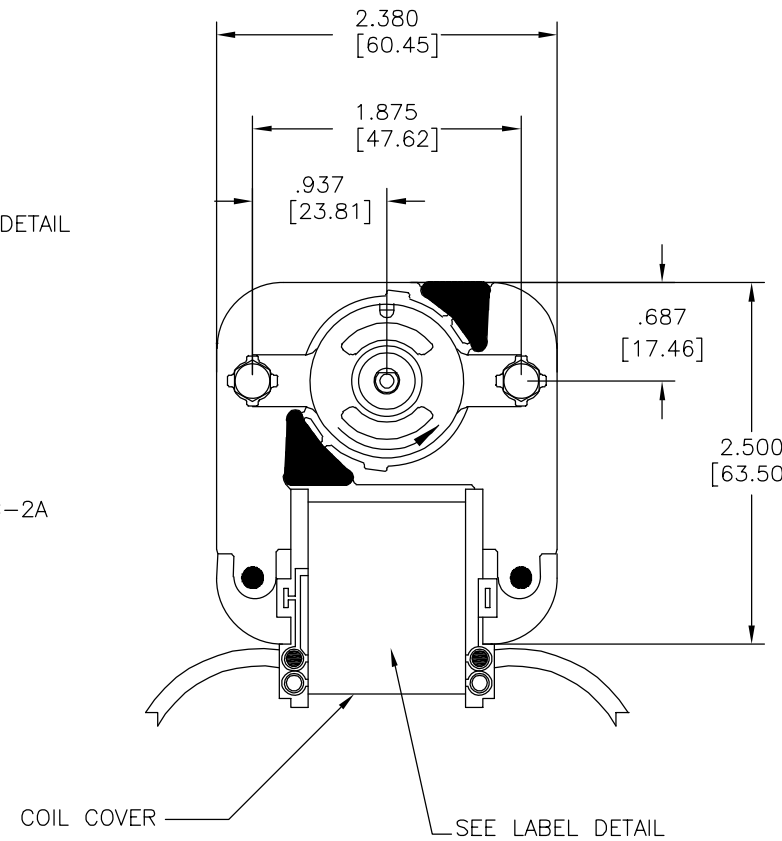
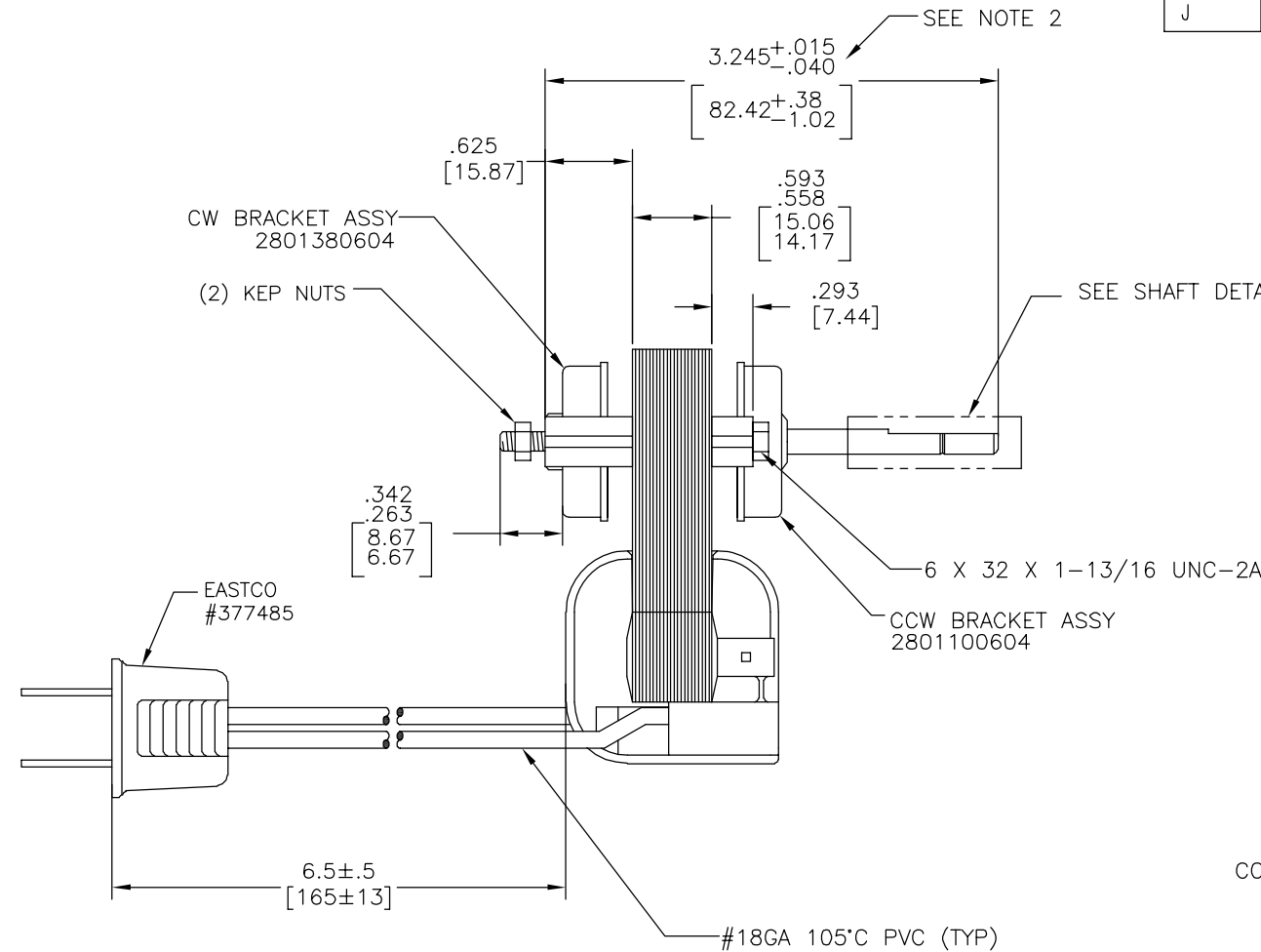


REV	ECO	REV BY	DATE	APPD	DATE
J	0027219	E.SINECIO	06-09-2012	G.ALVIDREZ	06-09-2012



- NOTES:
1. ALL DIMENSIONS ARE FOR REFERENCE ONLY UNLESS OTHERWISE SPECIFIED.
 2. MEASURED WITH ENDPLAY REMOVED.
 3. MOTORS THAT ARE MADE IN MEXICO MUST HAVE MADE IN MEXICO IN THE LABEL DATA.
 4. KEPNUTS TO BE HAND SPUN ON SCREW EXT.

SCHEMATIC DIAGRAM	LABEL DETAIL
	 MDL 57B2 Z.P. CL"B1" 120V 60HZ Ⓢ .60A 010069 C01575 MADE IN MEXICO

ROTATION: CCW
END PLAY: .060 [1.52] MAX
CUST REV:

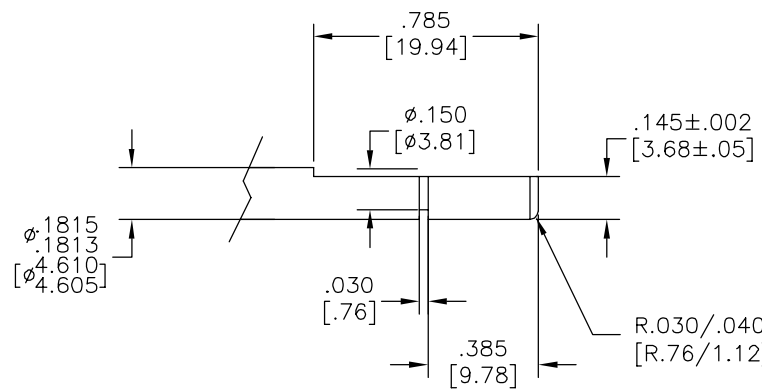
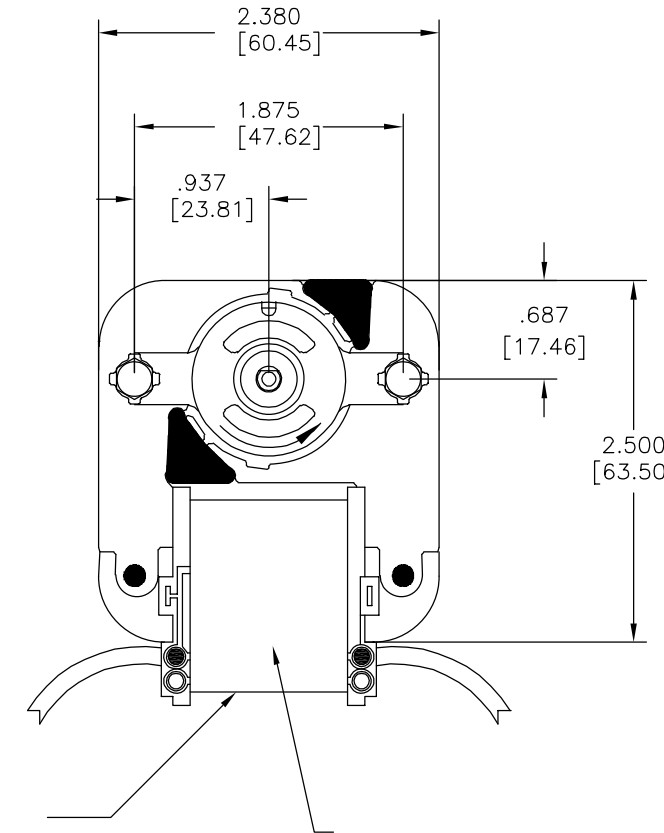
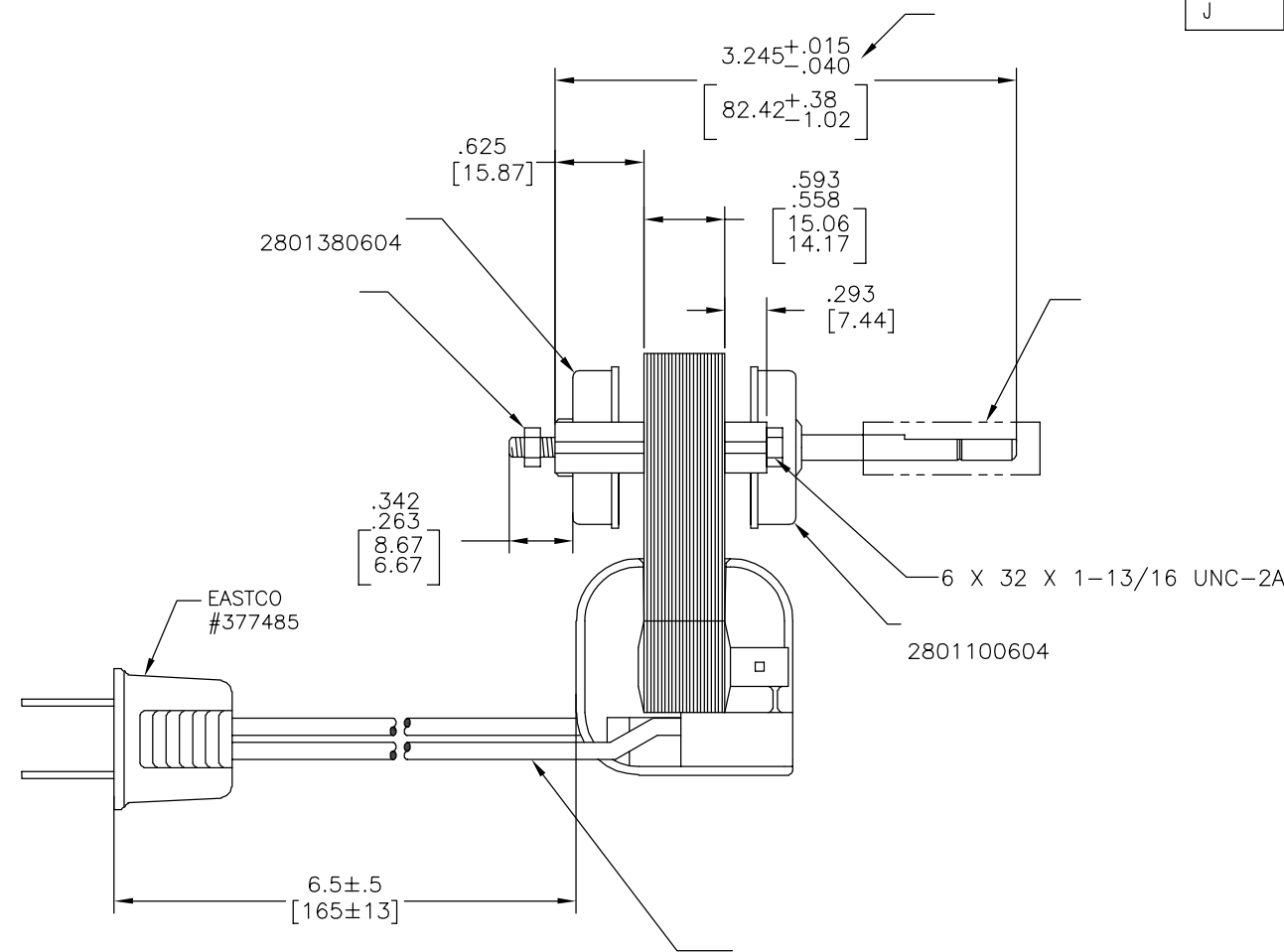
GEOMETRIC CHARACTERISTICS & SYMBOLS	
□	FLATNESS
—	STRAIGHTNESS
∠	ANGULARITY
⊥	PERPENDICULARITY (SQUARENESS)
//	PARALLELISM
○	ROUNDNESS (CIRCULARITY)
⊘	CYLINDRICITY
△	PROFILE OF ANY SURFACE
∧	PROFILE OF ANY LINE
↗	RUNOUT
⊕	TRUE POSITION
⊙	CONCENTRICITY
≡	SYMMETRY
ASME Y14.5M 1994	

UNLESS OTHERWISE SPECIFIED DIM. TOLERANCES ARE AS FOLLOWS:			
INCH	±.1	±.02	±.005 ±.0005
mm	±0.5	±0.13	±0.013
ANG. ±.50 DEG			
REMOVE BURRS & BREAK SHARP EDGES:			
INCH	.003-.015	mm	0.1-0.4
CORNER FILLETS TO:			
INCH	.020	mm	0.5
MACHINE SURFACES:			
INCH	125	mm	3.2
METRIC DIMS. SHOWN IN [BRACKETS]			

DR BY: JN	03-30-2001
APPD: J.HINES	04-19-2006
THIRD ANGLE PROJECTION	EDS DATE 02-22-2008 FORMAT REV H
CONFIDENTIAL: THIS DRAWING AND ITS INFORMATION ARE THE EXCLUSIVE AND CONFIDENTIAL PROPERTY OF REGAL-BELOIT CORPORATION AND ARE NOT TO BE DISCLOSED, DUPLICATED, DISTRIBUTED OR OTHERWISE USED WITHOUT THE WRITTEN CONSENT OF REGAL-BELOIT CORPORATION. -ALL RIGHTS RESERVED.	

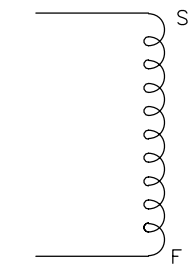
REGAL-BELOIT CORPORATION	
DESCRIPTION: OUTLINE	
SIZE: C	DWG NO: C01575
SCALE: NONE	SHEET 1

REVISION:	ECO	REVISADO POR:	FECHA:	APROBADO POR:	FECHA:
J	0027219	E.SINECIO	06-09-2012	G.ALVIDREZ	06-09-2012



ROTATION: CCW
 END PLAY: .060 [1.52] MAX
 CUST REV:

SCHEMATIC DIAGRAM



LABEL DETAIL

Century
 MDL 57B2
 Z.P. CL "B1"
 120V 60HZ Ⓢ
 .60A 010069
 C01575
RU
 MADE IN MEXICO

CARACTERISTICAS DE GEOMETRIA Y SIMBOLOS
 □ PLANICIDAD
 — RECTITUD
 ∠ ANGULARIDAD
 ⊥ PERPENDICULARIDAD (A ESCUADRA)
 // PARALELISMO
 ○ REDONDEZ (CIRCULARIDAD)
 ∅ CILINDRICIDAD
 △ PERFIL DE CUALQUIER SUPERFICIE
 ∩ PERFIL DE CUALQUIER LINEA
 ↗ VARIACION
 ⊕ POSICION REAL
 ⊙ CONCENTRICIDAD
 = SIMETRIA
 ASME Y14.5M 1994

A MENOS QUE SE ESPECIFIQUE DE OTRA MANERA, LAS TOLERANCIAS DE LAS DIMS; SON LAS SIGUIENTES:
 PULG ±.1 ±.02 ±.005 ±.0005
 mm ±0.5 ±0.13 ±0.013
 ANG. ± 50 GRADOS
 ELIMINAR REBABAS Y ORILLAS FILOSAS DEL BORDE.
 PULG .003-.015 mm 0.1-0.4
 FILETEAR ESQUINA: PULG .020 mm 0.5
 MAQUINAR SUPERFICIES
 PULG 125 mm .32
 DIMS METRICAS MOSTRADAS [PARENTESIS]

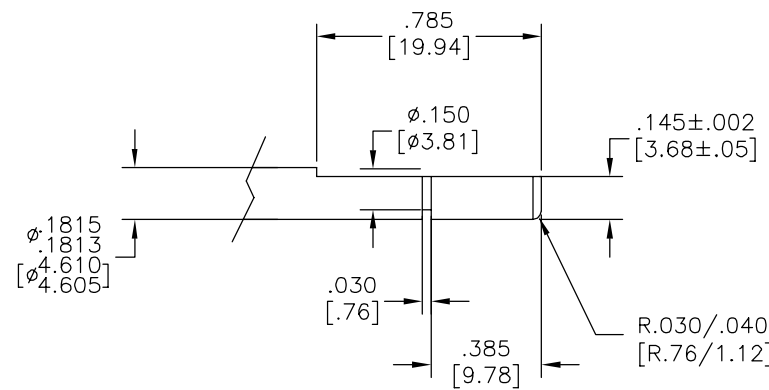
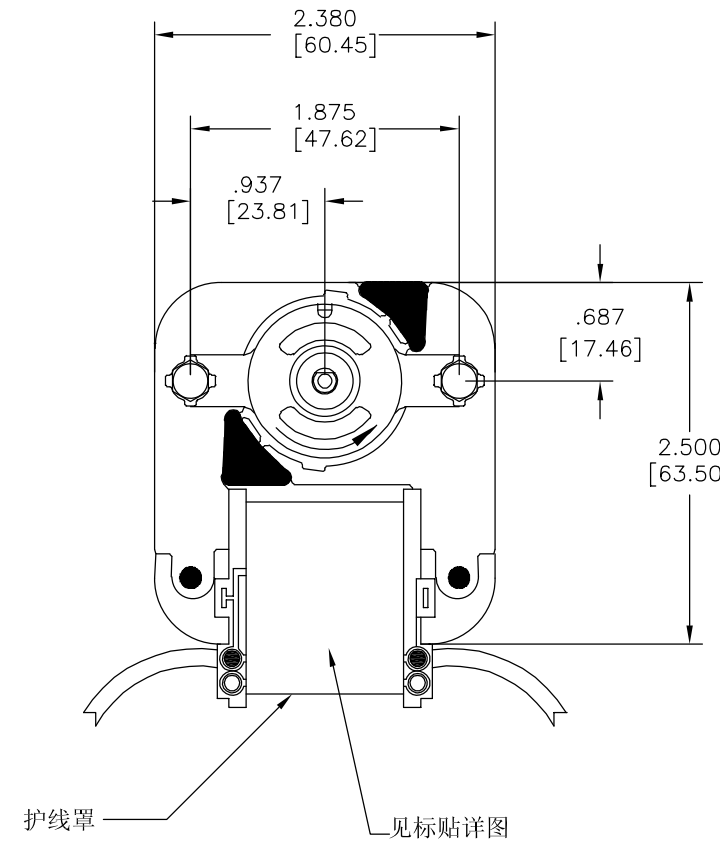
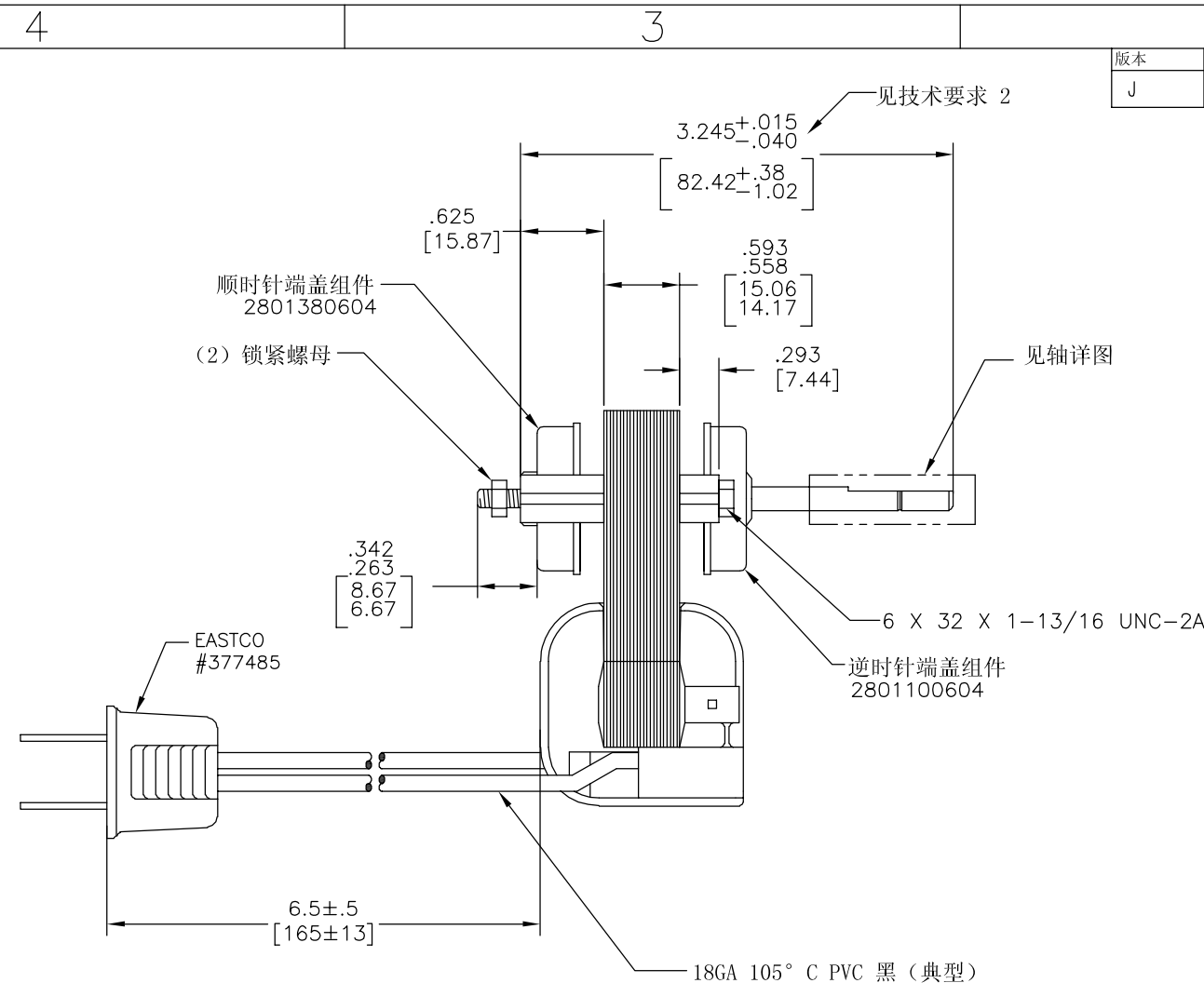
DIBUJADO POR: JN 03-30-2001
 APROBADO POR: J.HINES 04-19-2006
 TERCER ANGULO DE PROYECCION
 CONFIDENCIAL: ESTE DIBUJO Y SU INFORMACION SON PROPIEDAD DE USO EXCLUSIVO Y CONFIDENCIAL DE REGAL-BELOIT CORPORATION. Y NO DEBERAN SER REVELADOS, DUPLICADOS, DISTRIBUIDOS O USARSE DE OTRA MANERA SIN EL CONSENTIMIENTO ESCRITO DE REGAL-BELOIT CORPORATION. -TODOS LOS DERECHOS RESERVADOS.

REGAL REGAL-BELOIT CORPORATION

DESCRIPCION: OUTLINE

TAMAÑO: C NUMERO DE DIBUJO: C01575
 ESCALA: NONE HOJA: 1

版本	ECO	编制	日期	批准	日期
J	0027219	E.SINECIO	06-09-2012	G.ALVIDREZ	06-09-2012



轴详图 (2倍)

- 技术要求:
- 除另做说明外, 所有尺寸均为参考尺寸。
 - 移去端面测量。
 - 在墨西哥制造的电机标贴数据上必须有“MADE IN MEXICO”字样。
 - 禁止螺母人工拧紧

ROTATION: CCW
 END PLAY: .060 [1.52] MAX
 CUST REV:

SCHEMATIC DIAGRAM	LABEL DETAIL
	 MDL 57B2 Z.P. CL "B1" 120V 60HZ Ⓢ .60A 010069 C01575 MADE IN MEXICO

形位公差 □ 平面度 — 直线度 ∠ 倾斜度 ⊥ 垂直度 // 平行度 ○ 圆度 ⊙ 圆柱度 △ 面轮廓度 △ 线轮廓度 ↗ 圆跳动 ⊕ 位置度 ⊗ 同轴度 ≡ 对称度	除另有注明 尺寸公差如下: 英寸 X XX XXX XXXX ±.1 ±.02 ±.005 ±.0005 毫米 ±0.5 ±0.13 ±0.013 角度 ±.50 度 清理毛刺和尖棱 英寸 .003-.015 毫米 0.1-0.4 内圆角 英寸 .020 毫米 0.5 表面粗糙度 英制 125 米制 3.2
---	---

ASME Y14.5M 1994

绘图:	JN	03-30-2001
批准:	J.HINES	04-19-2006
第三角投影		图纸格式发布日期 02-22-2008 图纸格式版本 H
机密: 本图纸及相关信息所有权归REGAL-BELOIT CORPORATION. 未经REGAL-BELOIT CORPORATION书面授权, 不得泄露、复制、传播或作其他用途。一版权所有		

名称		REGAL REGAL-BELOIT CORPORATION
OUTLINE		
图幅	图号	C01575
比例	NONE	页号 1