



K674

INSTALLATION & OPERATION GUIDE

NOTE: Please read the entire operating guide prior to starting the installation.

I. SAFETY

The installation and servicing of heating equipment should only be performed by trained personnel due to the hazards of working with gas and electrical components. Precautions in the literature, on tags and on labels attached to the unit should be observed at all times when working on heating equipment. It is the responsibility of the user to read and follow these instructions carefully during installation. Strict adherence to the instructions will assure maximum benefit from, and safe operation of the inducer motor replacement kit. Have a fire extinguisher available.



Identifies the most serious hazards which will result in severe personal injury or death.



identifies a hazard which could result in personal injury or death.



identifies unsafe practices which would result in minor personal injury or product and property damage.

Follow all safety codes and wear proper safety equipment during installation. Always have a fire extinguisher available.

II. CHECK CONTENTS OF SHIPPING CARTON

The CONTENTS OF CARTON received should include the following:

Inducer Motor Assembly	1	Harness Adapter (Molex)	1
Installation Instructions	1	Harness Adapter (AMP)	1

If the inducer motor kit has missing or damaged parts contact your dealer before beginning installation.



DO NOT INSTALL AN INCOMPLETE OR DAMAGED INDUCER MOTOR REPLACEMENT KIT.

III. INSTALLATION

Step 1 –Removal of Existing Inducer Motor Assembly

1. Turn thermostat to OFF position.
2. Allow system to complete any blower off delay and come to a complete stop.
3. **WARNING** All gas and/or electrical supplies to unit should be turned OFF before beginning service.
4. Open the access panels.
5. Disconnect the inducer motor.
6. Remove the inducer motor assembly (motor assembly includes: motor, wheel and mount) by unscrewing all three assembly mounting screws. **CAUTION** Take care not to damage inducer wheel during removal.
7. For use during reassembly, measure the location of the wheel to the motor support. Remove the inducer wheel from motor shaft using an Allen wrench by loosening the inducer wheel setscrew.

NOTE: There may be scale or rust buildup on the shaft making it difficult to remove the wheel. If this happens, use light grit sand paper to slightly sand away the build up from the end of the motor shaft. A small amount of penetrating oil may also be applied to the shaft and hub. Carefully remove the wheel by gently tapping on the “hub only”. Damaged wheel must be replaced.

8. Remove the 3 motor grommet screws which secure the motor plate to motor support. Retain for later use.
9. Remove the 2 screws securing motor to motor plate. Retain for later use.

Step 2 –Installation of the New Inducer Motor Assembly

1. Use the 2 original screws from (Step 1, note 9.) above to attach the new inducer motor assembly to the motor plate.
2. Use the 3 original screws from (Step 1, note 8.) above to attach motor support to motor plate through the three grommets. If the old assembly came supplied with a shaft seal between plate and support it is important to move it to the new assembly. Tighten the screws. **CAUTION** Do not over tighten because this could cause stripping. If the shaft seal is damaged contact the original manufacturer for a replacement.
3. Reinstall inducer wheel. Position the wheel using measurements obtained during disassembly as displayed in FIGURE 1. Align the shaft flat with the setscrews, and firmly tighten screws FIGURE 2. Do not over tighten.
4. Use 3 original mounting screws to install the inducer motor assembly in the inducer housing (**These are shorter in length than the other screws**).



Make sure the green motor ground wire is reinstalled under one of the mounting screws.

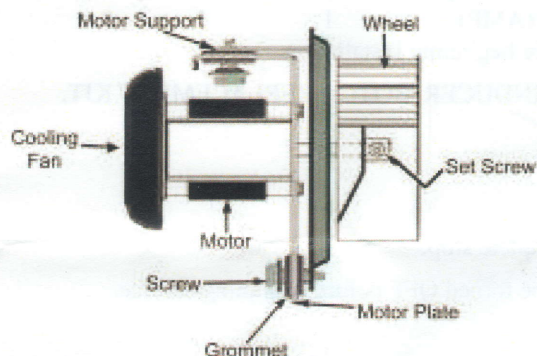
NOTE: The use of longer screws may result in interference between the screws and the inducer wheel. Use only the original mounting screws.

5. Spin black plastic cooling fan to ensure assembly moves freely after all screws have been securely tightened. If assembly does not spin freely, remove inducer motor assembly from inducer housing and verify correct location of inducer wheel on motor shaft.
6. Connect inducer motor to wiring harness. The kit includes the appropriate adapters for all applications. Use adapter (if needed) according to type of connector on original main wiring harness. For 376AAW/BAW, 58SC, 395AAW5/BAW, 58SSB, and 58DHB Furnaces, use adapter with ¼ inch quick connects and AMP connector. Reference FIGURE 3
Use the quick Molex adapter for the following models: Reference FIGURE 4
373LAD Series A and B 373LAV Series A, 376CAV Series A and B, 383KAD Series A and B, 383KAV Series A, 394HAD Series A, 395CAV Series A and B, 396HAD Series A, GA1AAD Series A, GA2AAD Series A 58DFA Series 101, 58DHC All Series, 58GFA Series 101, 58PAP Series 101 and 111, 58PAV Series 101, 58RAP Series 101 and 111, 58RAV Series 101, 58SSC All Series. No other models will require an adapter. Connect harness to motor. Discard any unused adapters after you have a good connection.
7. Turn on electrical and/or gas supplies to the furnace.
8. Close interlock switch by replacing blower door. Do not call for heat from thermostat yet. First, perform self-test on the control board. Instructions can be found on the diagnostic code label or control box. This test will ensure that all components including the inducer assembly are operational.
9. Check for proper operation by running the furnace through one complete heating cycle.



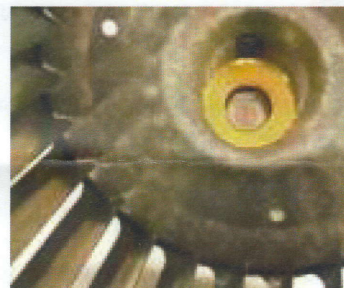
WARNING

NEVER CONTACT THE BLOWER WHEEL (VANES) WHILE THE BLOWER IS OPERATING.



NOTE: Fan appearance will vary between furnaces.

FIGURE 1—Wheel & Setscrew Location



NOTE: Fan appearance will vary between furnaces.

FIGURE 2 – Shaft Flat & Set Screw

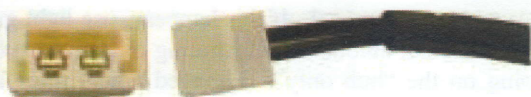


FIGURE 3—AMP Connector

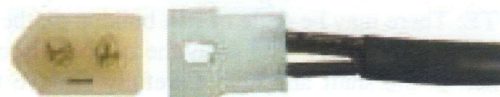


FIGURE 4—Molex Connector

IV. MAINTENACE

Basic maintenance functions including cleaning coils or cleaning or replacing filters can be performed by untrained personnel. All other operations should be performed by trained and licensed service personnel.



1401 East North Street
Eldon, Missouri 65026
Ph. 1-800-325-8313
Fax 1-800-352-7207
www.fasco.com

Manufacture reserves the right to discontinue, or change at any time, specifications or designs without notice and without incurring obligations.