



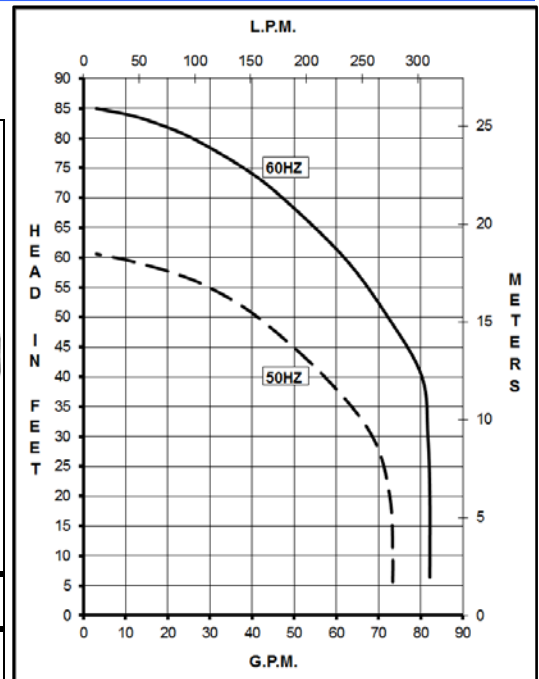
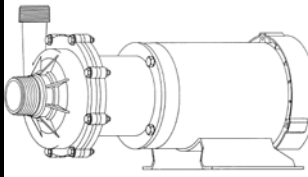
MARCH PUMPS

1819 PICKWICK AVE., GLENVIEW, IL 60026-1306, U.S.A
PHONE: (847) 729-5300 - FAX: (847) 729-7062
WWW.MARCHPUMP.COM

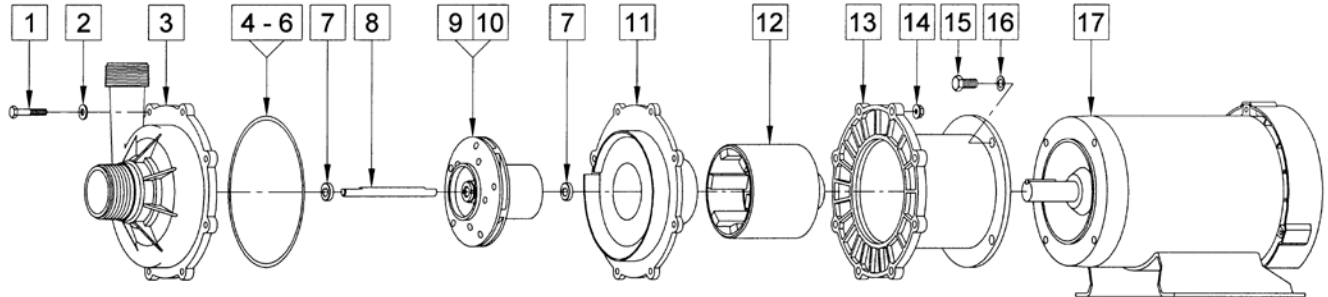
TE-7.5K-MD, TE-7.5P-MD

SPECIFICATIONS		TE-7.5K-MD & TE-7.5P-MD
Model Abbreviations		K: Kynar, P: Polypropylene
Max Flow	60Hz - 50Hz	82 gpm - 268 lpm
Max Head	60Hz - 50Hz	85 ft / 36.8 psi - 18 m
Inlet - Outlet		2" MPT - 1-1/2" MPT
Max Internal Pressure		60 psi / 4.1 bar
Max Liquid Temperature		190°F / 87°C
Overall Pump Size Inches		10 x 9.53 x 19.58
(H x W x L) cm		25.4 x 24.2 x 49.7
Packed Weight		54.80 lbs / 24.85 kg
		60Hz 50Hz
Motor Type		Totally Enclosed Fan Cooled
Rating / Duty		U.L. listed motor / Continuous
3Ph	Watts - Amps	(230V) 1911 - 5.4(190V) 1212 - 4.8
		(460V) 1911 - 2.7(380V) 1212 - 2.4
	Hp / Kw - Rpm	2 - 3450 1.118 - 2850
Electrical Connection		Conduit Box
Materials in Contact With Solution		TE-7.5K-MD: Natural Kynar (PVDF), Ceramic, Viton, Carbon. TE-7.5P-MD: Polypropylene, Ceramic, Viton, Carbon.

All specifications & data are based on pumping water & are intended as a guideline only. Specifications may vary with different motors.



DESCRIPTION & OPERATION: Series 7.5 are centrifugal magnetic drive pumps, eliminating the need for a shaft seal. Pumps can be serviced with an adjustable wrench. See the parts list for a breakdown of parts. Pumps are not self-priming, lack a suction lift, and thus require a **flooded suction**. Pumps **cannot be run dry** because the impeller requires the liquid being pumped for lubrication. The direction of motor rotation should be clockwise when facing the inlet of the pump. For liquids with a specific gravity greater than water, have a higher viscosity, or for elevated temperatures, a trimmed impeller may be necessary. For application assistance, contact March Pump.



CAUTION IN ASSEMBLY & DISASSEMBLY: The magnetic coupling in the pump is strong enough to warrant caution. When servicing the pump, the attraction of the impeller magnet and drive magnet may pull the impeller from your grasp. When assembling, hold onto the outer diameter of the impeller vanes with both hands and gently engage the impeller into the magnet field. Hold the impeller firmly and resist the magnetic attraction as you slowly put the impeller back in. The magnetic forces are strongest between 1/3 to 2/3 of engagement and will diminish when the magnets become aligned. Do not allow the impeller to snap into the rear housing, doing so may result in damage. Exercise caution in placing any of the magnets near steel, tools, or other sensitive instruments as doing so may result in damage or personal injury. When attaching drive magnet to motor shaft, position the face of the drive magnet 5/32 inch above the face of the motor bracket.

LIMITED WARRANTY: March pumps are guaranteed only against defects in workmanship or materials for a period of one year from date of manufacture pumping water. For the complete warranty and to register online go to www.marchpump.com/warranty-registration

#	DESCRIPTION	TE-7.5K-MD	TE-7.5P-MD	SIZE (Inches)	QTY.	TE-7.5K-MD	TE-7.5P-MD
1	Screw	Stainless Steel		1/4-20 x 1-1/2 Lg.	8	0153-0011-1000	
2	Washer	Stainless Steel		1/4 ID x 5/8 OD	8	0157-0023-1000	
3	Front Housing	Natural Kynar	Polypropylene		1	0156-0001-1000	0156-0060-1000
4	"O" Ring	Viton		0.157 CS x 6.457 ID	1	0156-0010-1000	
5	"O" Ring (Option)	Viton/Teflon		0.157 CS x 6.457 ID	1	0156-0023-1000	
6	"O" Ring (Option)	EPDM		0.157 CS x 6.457 ID	1	0156-0034-1000	
7	Thrust Washer (Front & Rear)	Ceramic			2	0156-0016-1000	
8	Shaft	Ceramic			1	0156-0007-1000	
9	Impeller w/Carbon Bushing	Natural Kynar	Polypropylene		1	0156-0004-0200	0156-0064-0200
10	Impeller w/Mica Teflon Bushings (Option)	Natural Kynar	Polypropylene		1	0156-0004-0300	0156-0064-0300
11	Rear Housing	Natural Kynar	Polypropylene		1	0156-0002-1000	0156-0061-1000
12	Drive Magnet				1	0156-0009-0100	
13	Motor Bracket	Plastic			1	0156-0041-1000	
14	Hex Nut	Stainless Steel		1/4-20	8	0156-0053-1000	
15	Screw	Stainless Steel		3/8-16 x 1 Lg.	4	0155-0017-1000	
16	Washer	Stainless Steel		3/8 ID x 5/8 OD	4	0155-0019-1000	
17	Motor, TEFC, 2 HP, 230/460V, 50/60Hz, 3 Phase				1	0156-0008-1000	
W	Wet End Kit (Items: 1, 2, 3, 4, 7, 8, 9, 11)				1	0156-0031-0100	0156-0066-0100

Explosion proof and special voltage motors are available upon special order.

NOTE: Contact Factory for other materials and/or parts not listed.

0156-0015-1000 R14