

REV	ECO	REV BY	DATE	APPD	DATE
J	ECO-0018174	A. NAJERA	01-26-2011	T. REYES	01-26-2011

FRAME	FORM	HORSE POWER	KEYWAY	KEY LENGTH	A	B	BA	C	D	E	2F	G	H	J	BS	N	O	P	T	U	V
CPF-215T	M	---	.312X.156 [7.92X3.96]	2.38 [60.5]	10.50 [266.7]	8.50 [215.9]	3.50 [88.9]	19.13 [485.9]	5.25 [133.4]	4.25 [108.0]	7.00 [177.8]	.50 [12.7]	.406 [10.31]	2.00 [50.8]	3.50 [88.9]	3.50 [88.9]	11.10 [281.94]	11.70 [297.18]	2.00 [50.8]	1.375 [34.93]	3.12 [79.2]
CPF-215TZ	M	7.5	.25X.125 [6.35X3.18]	1.77 [45.0]	9.55 [242.6]	9.12 [231.6]	3.50 [88.9]	19.13 [485.9]	5.25 [133.4]	4.25 [108.0]	7.00 [177.8]	.375 [9.53]	.406 [10.31]	1.61 [40.9]	5.40 [137.2]	3.70 [94.0]	11.09 [281.7]	11.04 [280.4]	1.12 [28.4]	1.125 [28.58]	3.12 [79.2]
CPF-215T	M	10.0	5/16X5/32	2.38 [60.5]	9.55 [242.6]	9.12 [231.6]	3.50 [88.9]	19.13 [485.9]	5.25 [133.4]	4.25 [108.0]	7.00 [177.8]	.375 [9.53]	.406 [10.31]	1.61 [40.9]	5.40 [137.2]	3.70 [94.0]	11.09 [281.7]	11.04 [280.4]	1.12 [28.4]	1.375 [34.93]	3.12 [79.2]

FRAME	FORM	HORSE POWER	W	XE	AA	AB	AC	AF	XA	XH	XJ
CPF-215T	M	---	.12 [3.0]	6.13 [155.7]	1.00 [25.4]	10.77 [273.6]	8.32 [211.3]	3.74 [95.0]	9.22 [234.2]	5.93 [150.6]	1.38 [35.1]
CPF-215TZ	M	7.5	.12 [3.0]	6.13 [155.7]	1.00 [25.4]	10.14 [257.6]	7.67 [194.8]	3.74 [95.0]	9.22 [234.2]	5.93 [150.6]	1.38 [35.1]
CPF-215T	M	10.0	.12 [3.0]	6.13 [155.7]	1.00 [25.4]	10.14 [257.6]	7.67 [194.8]	3.74 [95.0]	9.22 [234.2]	5.93 [150.6]	1.38 [35.1]

GEOMETRIC CHARACTERISTICS & SYMBOLS
 ▭ FLATNESS
 — STRAIGHTNESS
 ∠ ANGULARITY
 ⊥ PERPENDICULARITY (SQUARENESS)
 // PARALLELISM
 ○ ROUNDNESS (CIRCULARITY)
 ⌀ CYLINDRICITY
 Ⓢ PROFILE OF ANY SURFACE
 Ⓡ PROFILE OF ANY LINE
 ↗ RUNOUT
 ⊕ TRUE POSITION
 ⊙ CONCENTRICITY
 = SYMMETRY

UNLESS OTHERWISE SPECIFIED
 DIM. TOLERANCES ARE AS FOLLOWS:
 INCH .1 ±.02 .02 ±.005 .005 ±.0005
 mm .1 ±.02 .02 ±.005 .005 ±.0005
 ANG. ±50 DEG
 REMOVE BURRS & BREAK SHARP EDGES:
 INCH .003-.015 mm 0.1-0.4
 CORNER FILLETS TO:
 INCH .020 mm 0.5
 MACHINE SURFACES:
 INCH 125 mm 3.2
 METRIC DIMS. SHOWN IN [BRACKETS]

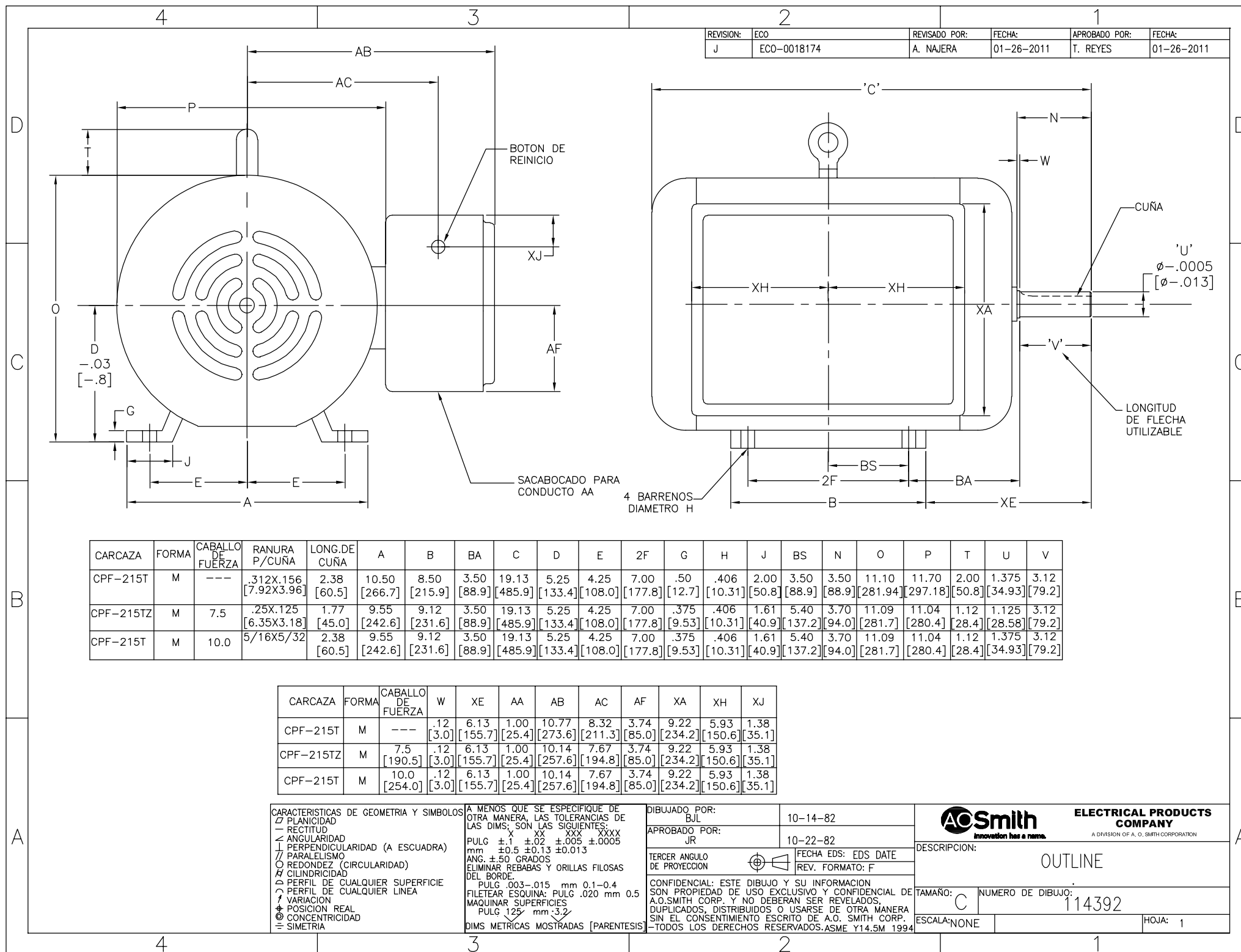
DR BY: BJL 10-14-82
 APPD: JR 10-22-82
 THIRD ANGLE PROJECTION
 CONFIDENTIAL: THIS DRAWING AND ITS INFORMATION ARE THE EXCLUSIVE AND CONFIDENTIAL PROPERTY OF A.O. SMITH CORP. AND ARE NOT TO BE DISCLOSED, DUPLICATED, DISTRIBUTED OR OTHERWISE USED WITHOUT THE WRITTEN CONSENT OF A.O. SMITH CORP.
 -ALL RIGHTS RESERVED. ASME Y14.5M 1994

AC Smith ELECTRICAL PRODUCTS COMPANY
 innovation has a name. A DIVISION OF A. O. SMITH CORPORATION

DESCRIPTION: **OUTLINE**

SIZE: C DWG NO: 114392

SCALE: NONE SHEET: 1



CARACTERÍSTICAS DE GEOMETRIA Y SIMBOLOS:
 / PLANICIDAD
 - RECTITUD
 < ANGULARIDAD
 ⊥ PERPENDICULARIDAD (A ESCUADRA)
 // PARALELISMO
 ○ REDONDEZ (CIRCULARIDAD)
 ⊙ CILINDRICIDAD
 ⊕ PERFIL DE CUALQUIER SUPERFICIE
 ⊖ PERFIL DE CUALQUIER LINEA
 ∇ VARIACION
 ⊕ POSICION REAL
 ⊙ CONCENRICIDAD
 = SIMETRIA

A MENOS QUE SE ESPECIFIQUE DE OTRA MANERA, LAS TOLERANCIAS DE LAS DIMS; SON LAS SIGUIENTES:
 PULG ±.1 ±.02 ±.005 ±.0005
 mm ±0.5 ±0.13 ±0.013
 ANG. ±50 GRADOS
 ELIMINAR REBABAS Y ORILLAS FILOSAS DEL BORDE.
 PULG .003-.015 mm 0.1-0.4
 FILETEAR ESQUINA: PULG .020 mm 0.5
 MAQUINAR SUPERFICIES
 PULG 125 mm 3.2
 DIMS METRICAS MOSTRADAS [PARENTESIS]

DIBUJADO POR: B.J.L. 10-14-82
 APROBADO POR: J.R. 10-22-82
 TERCER ANGULO DE PROYECCION
 CONFIDENCIAL: ESTE DIBUJO Y SU INFORMACION SON PROPIEDAD DE USO EXCLUSIVO Y CONFIDENCIAL DE A.O.SMITH CORP. Y NO DEBERAN SER REVELADOS, DUPLICADOS, DISTRIBUIDOS O USARSE DE OTRA MANERA SIN EL CONSENTIMIENTO ESCRITO DE A.O. SMITH CORP. -TODOS LOS DERECHOS RESERVADOS.ASME Y14.5M 1994

AC Smith ELECTRICAL PRODUCTS COMPANY
 innovation has a name. A DIVISION OF A. O. SMITH CORPORATION

DESCRIPCION: OUTLINE
 TAMAÑO: C NUMERO DE DIBUJO: 114392
 ESCALA: NONE HOJA: 1

