

PRODUCT INFORMATION PACKET



Model No: M6C17FB10L

Catalog No: 110088.00

..1HP..1725RPM.56.TEFC.115/208-230VAC.1PH.60HZ.CONT.40C.1.15SF.RIGID.M6C17FB10L.....AG -
FARM DUTY/GENERAL PURPOSE.MANUAL.....

Agricultural



Regal and Leeson are trademarks of Regal Beloit Corporation or one of its affiliated companies.

©2018 Regal Beloit Corporation, All Rights Reserved. MC017097E





Nameplate Specifications

Output HP	1 Hp	Output KW	0.75 kW
Frequency	60 Hz	Voltage	115/208-230 V
Current	14/7.1-7 A	Speed	1725 rpm
Service Factor	1.15	Phase	1
Efficiency	74 %	Duty	CONTINUOUS
Insulation Class	B	Design Code	N
KVA Code	K	Frame	56
Enclosure	TEFC	Overload Protector	MANUAL
Ambient Temperature	40 °C	Drive End Bearing Size	6203
Opp Drive End Bearing Size	6203	UL	Recognized
CSA	Y	CE	N
IP Code	43		

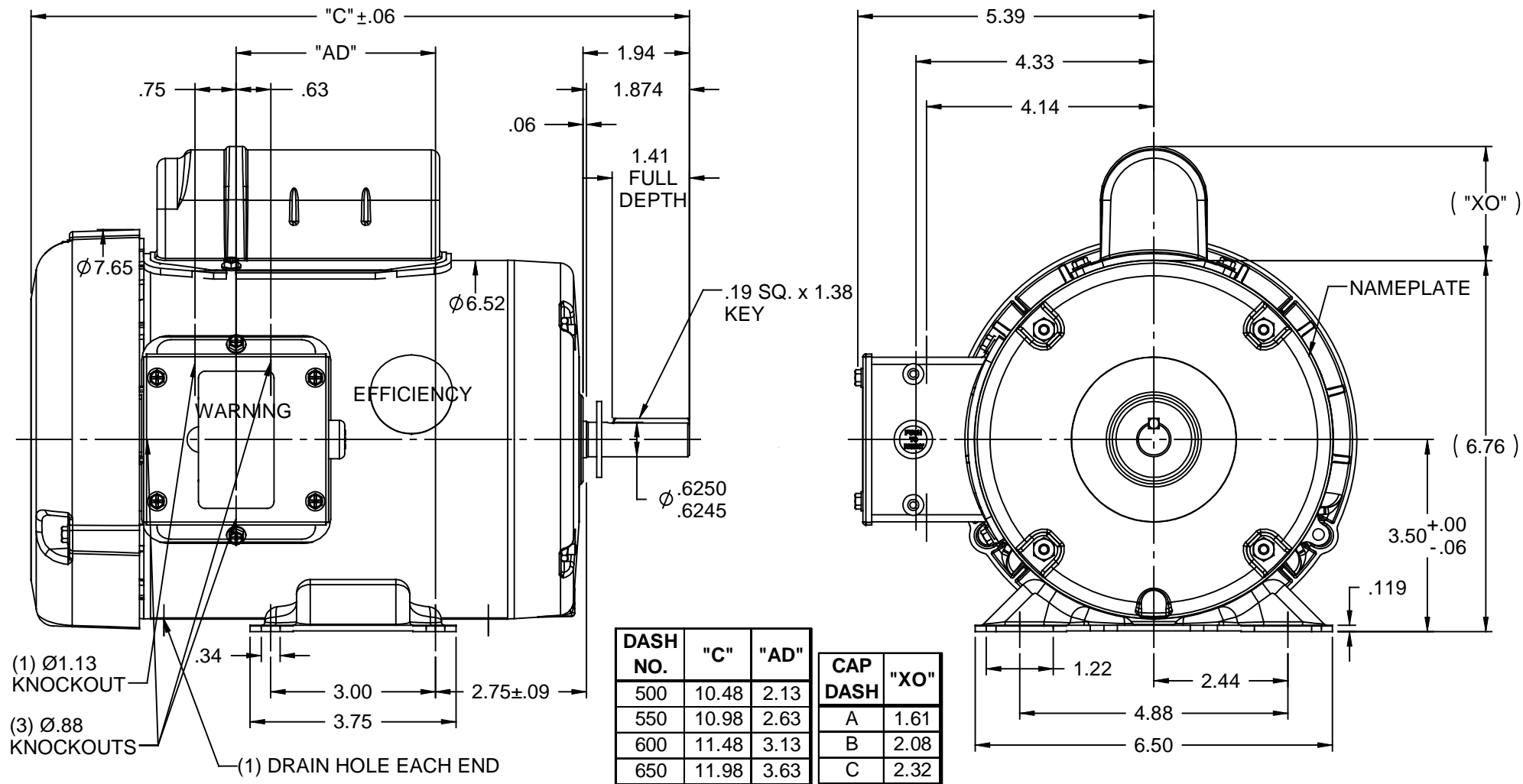
Technical Specifications

Electrical Type	CAP START IND RUN	Starting Method	ACROSS THE LINE
Poles	4	Rotation	SELECTIVE CCW
Mounting	RIGID	Motor Orientation	HORIZONTAL
Drive End Bearing	BALL	Opp Drive End Bearing	BALL
Frame Material	ROLLED STEEL	Shaft Type	STANDARD 56
Overall Length	11.98 in	Frame Length	6.5 in
Shaft Diameter	0.63 in	Shaft Extension	1.88 in
Assembly/Box Mounting	F1 ONLY		
Outline Drawing	028774-650B	Connection Diagram	5003.03

This document is the property of REGAL BELOIT CORPORATION ("RBC") including its subsidiaries and divisions and contains proprietary information of RBC. This document is loaned on the express condition that neither it nor the information contained therein shall be disclosed to others without the express written consent of RBC, and that the information shall be used by the recipient only as approved expressly by RBC. This document shall be returned to RBC upon its request. This document may be subject to certain restrictions under U.S. export control laws and regulations.


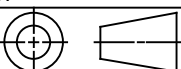
NOTES:

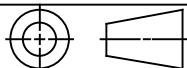
- 1) MANUAL OVERLOAD PROTECTOR.
- 2) FLINGER ON SHAFT.
- 3) GASKETS THROUGHOUT.
- 4) DRAIN HOLE IN FRAME (BOTH ENDS).



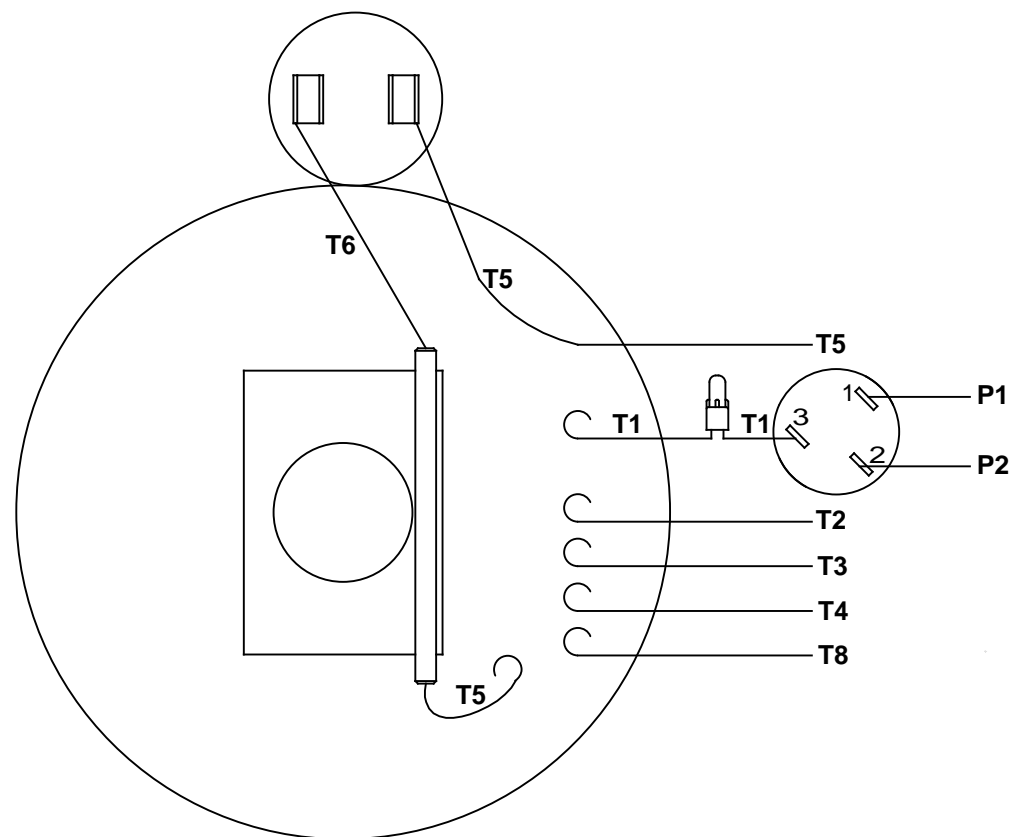
DASH NO.	"C"	"AD"
500	10.48	2.13
550	10.98	2.63
600	11.48	3.13
650	11.98	3.63

CAP DASH	"XO"
A	1.61
B	2.08
C	2.32

				TOLERANCES UNLESS SPECIFIED			ELECTRIC MOTORS		DRAWN KMM 08/09/07	
				DEC	INCHES		GEARMOTORS		CHK	
				.X	±.1		AND DRIVES		APPR	
				.XX	±.03		TITLE OUTLINE - 56 FRAME TEFC - RIGID		SCALE 3:8	
				.XXX	±.005				REF 032507	
01	ADD DRAIN HOLE NOTE PER ISAAC 08-1915	LST 5/7/08	XX	.XXXX	±.0005	MAT'L		FMF 110088.00		
NO	REVISION	BY & DATE	CHK	ANG	±1/2°	FINISH GENERAL PURPOSE		PAGE OF		
<div>THIRD ANGLE PROJECTION</div> 			RFP		PREV		SIZE A	DRAWING NO 028774		REV 01
			NETWORK FILE NAME							

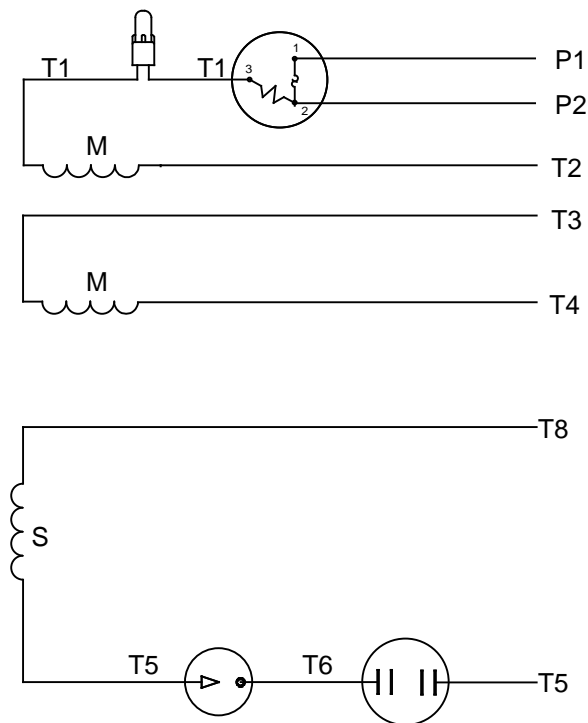
THIRD ANGLE
PROJECTION

VIEW FROM OUTSIDE OF MOTOR AT SWITCH END


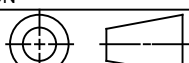


RBC PROPRIETARY AND CONFIDENTIAL INFORMATION
This document is the property of REGAL BELOIT CORPORATION ("RBC") including its subsidiaries and divisions and contains proprietary information of RBC. This document is loaned on the express condition that neither it nor the information contained therein shall be disclosed to others without the express written consent of RBC, and that the information shall be used by the recipient only as approved expressly by RBC. This document shall be returned to RBC upon its request. This document may be subject to certain restrictions under U.S. export control laws and regulations.

LINE LEADS



	ROTATION FACING LEAD END	L1	L2	JOIN	INSULATE SEPARATELY
HIGH VOLT	C.C.W.	P1	T4 T5	T2,T3 T8	P2
	C.W.	P1	T4 T8	T2,T3 T5	P2
LOW VOLT	C.C.W.	P1	T2,T4 T5	P2,T3 T8	---
	C.W.	P1	T2,T4 T8	P2,T3 T5	---

				TOLERANCES UNLESS SPECIFIED			ELECTRIC MOTORS		DRAWN	WLW	08/20/79	
				DEC	INCHES		GEARMOTORS		CHK	ADN	08/27/76	
				.X	±.1		AND DRIVES		APPR	WRK	08/27/76	
				.XX	±.01	TITLE EXTERNAL WIRING DIAGRAM TYPE "C" W/PROTECTOR				SCALE	1:1	
06	REDRAWN IN SOLIDWORKS	VJB 7/22/2011		.XXX	±.005					REF		
05	REDRAWN ON CAD	DBT 05/27/97		.XXXX	±.0005	MAT'L DECAL - 004011				FMF		
NO	REVISION	BY & DATE	CHK	ANG	±1/2°	FINISH				PAGE	OF	
<div>THIRD ANGLE PROJECTION</div> 			RFP		PREV				SIZE	DRAWING NO		REV
			NETWORK FILE NAME 00500303				A	005003-03		06		