

# PRODUCT INFORMATION PACKET



Model No: C143C34FB5G

Catalog No: 120925.00

..1

1/2HP..3450RPM.143.TEFC.115/230V.1PH.60HZ.CONT.40C.1.0SF.ROUND.C143C34FB5G.....WOODWORTH KING.NOT.....

Other Purpose



Regal and Leeson are trademarks of Regal Beloit Corporation or one of its affiliated companies.

©2018 Regal Beloit Corporation, All Rights Reserved. MC017097E





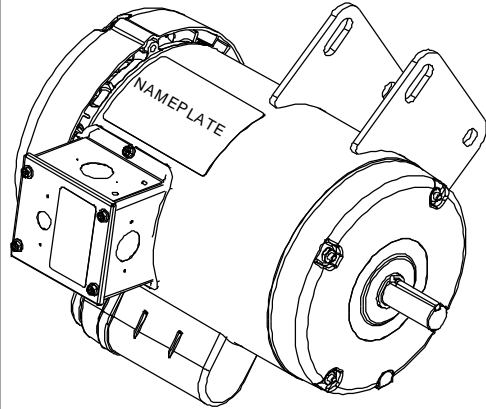
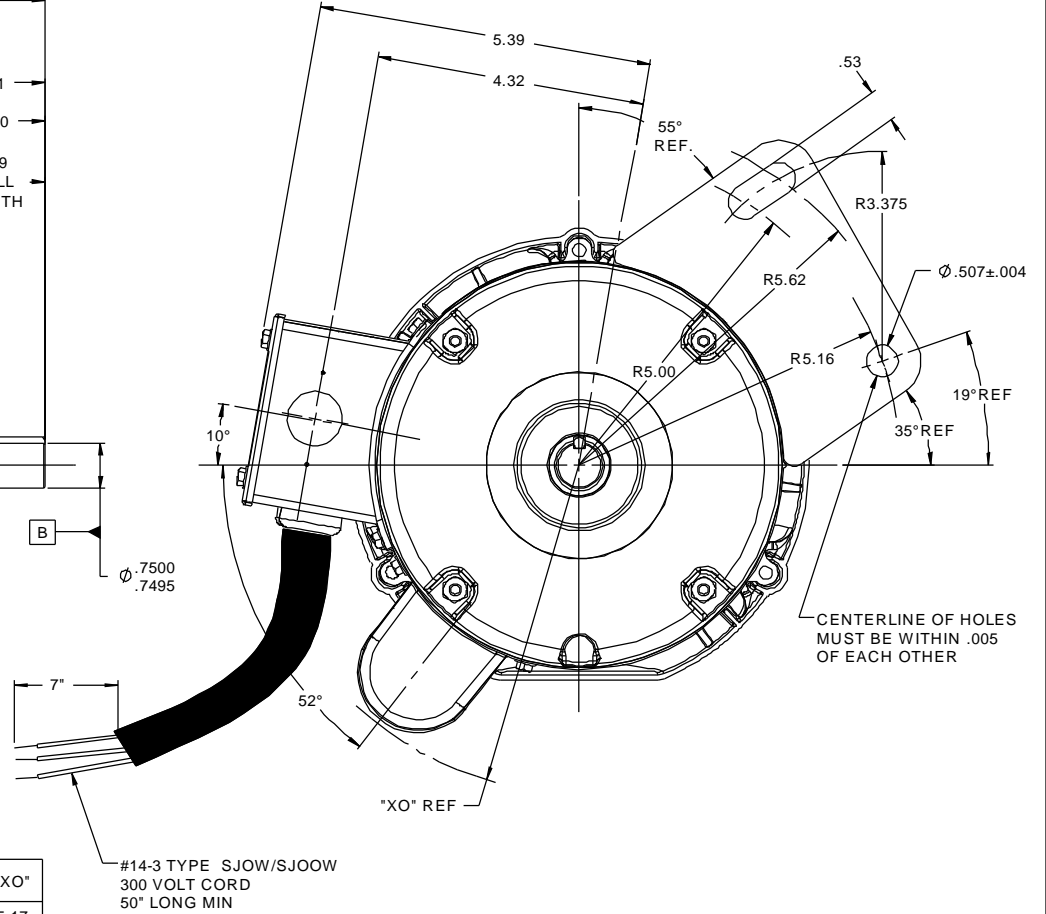
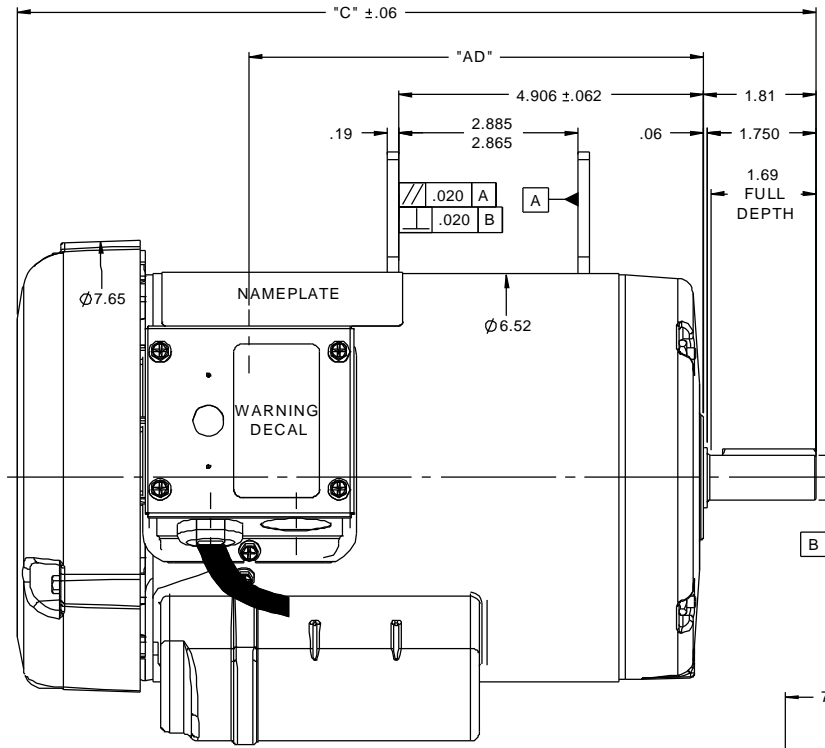
### Nameplate Specifications

Output HP	1.5 Hp	Output KW	1.12 kW
Frequency	60 Hz	Voltage	115/230 V
Current	20/10 A	Speed	3450 rpm
Service Factor	1	Phase	1
Efficiency	69 %	Duty	CONTINUOUS
Insulation Class	B	Design Code	L
KVA Code	L	Frame	143Y
Enclosure	TEFC	Overload Protector	NOT
Ambient Temperature	40 °C	Drive End Bearing Size	6205
Opp Drive End Bearing Size	6203	UL	Recognized
CSA	Y	CE	N
IP Code	43		

### Technical Specifications

Electrical Type	CAP START IND RUN	Starting Method	ACROSS THE LINE
Poles	2	Rotation	FIXED CCW
Mounting	ROUND	Motor Orientation	HORIZONTAL
Drive End Bearing	BALL	Opp Drive End Bearing	BALL
Frame Material	ROLLED STEEL	Shaft Type	SGL SPL EXT
Overall Length	12.86 in	Frame Length	7.5 in
Shaft Diameter	0.75 in	Shaft Extension	1.75 in
Assembly/Box Mounting	F1 ONLY		
Outline Drawing	028924-750B	Connection Diagram	5005.01

RBC PROPRIETARY AND CONFIDENTIAL INFORMATION  
 This document is the property of REGAL BELOIT CORPORATION ("RBC") including its subsidiaries and divisions and contains proprietary information of RBC. This document is loaned on the express condition that neither it nor the information contained therein shall be disclosed to others without the express written consent of RBC, and that the information shall be used by the recipient only as approved expressly by RBC. This document shall be returned to RBC upon its request. This document may be subject to certain restrictions under U.S. export control laws and regulations.



#14-3 TYPE SJOW/SJOOV  
 300 VOLT CORD  
 50" LONG MIN

DASH NO.	"C"	"AD"	CAP DASH.	"XO"
700	12.36	6.74	A	5.17
750	12.86	7.24	B	5.55
			C	5.81

NOTES:  
 GASKETS THROUGHOUT

TOLERANCES UNLESS SPECIFIED				TITLE	ELECTRIC MOTORS GEARMOTORS AND DRIVES	DRAWN GRB 12/08/08	
DEC	INCHES						
X	±.1			OUTLINE - 140Y FRAME		CHK DJ 12/08/08	
XX	±.03			TEFC - SPECIAL MOUNT	SCALE 1:2	APPR DJ 12/08/08	
XXX	±.005			MAT'L CONTRACTOR'S SAW	REF 028635		
XXXX	±.0005				FMF 120925.00		
NO	±.730"				PAGE 1 OF 1	REV	
01	DIMENSIONED BASE HOLE ECR 0041996	GS	8/26/13			REV	
	REVISION	BY & DATE	CHK	ANG	±.730"	FINISH	
	THIRD ANGLE PROJECTION		RFP	12/08/08	PREV	SIZE B	DRAWING NO 028924
							REV 01
							NETWORK FILE NAME 028924

VIEW FROM OUTSIDE OF MOTOR AT SWITCH END.




LINE LEADS



RBC PROPRIETARY AND CONFIDENTIAL INFORMATION  
 This document is the property of REGAL BELOIT CORPORATION ("RBC") including its subsidiaries and divisions and contains proprietary information of RBC. This document is loaned on the express condition that neither it nor the information contained therein shall be disclosed to others without the express written consent of RBC, and that the information shall be used by the recipient only as approved expressly by RBC. This document shall be returned to RBC upon its request. This document may be subject to certain restrictions under U.S. export control laws and regulations.

	ROTATION FACING LEAD END	L1	L2	JOIN
HIGH VOLT	C.C.W.	T1	T4, T5	T2, T3, T8
	C.W.	T1	T4, T8	T2, T3, T5
LOW VOLT	C.C.W.	T1, T3, T8	T2, T4, T5	-----
	C.W.	T1, T3, T5	T2, T4, T8	-----

--	REDRAWN IN SOLIDWORKS	VJB 02/16/11	TOLERANCES UNLESS SPECIFIED			 ELECTRIC MOTORS GEARMOTORS AND DRIVES	DRAWN ADH 08/06/73
27	UPDATED TO CURRENT STANDARDS	DBT 05/27/97	DEC	INCHES			CHK
26	ADDED PAGE 32 (114787) & PAGE 33 (114788)	KAZ 12/20/95	PG	.X	±.1	APPR JCW 03/09/79	
25	ADDED PAGE 31	KAZ 04/19/95	DL	.XX	±.01	SCALE 1:1	
24	ADDED PAGES 29 & 30	KMM 03/30/95	DL	.XXX	±.005	REF FIG 2-23 C4A	
23	ADDED PAGE 28	KMM 01/27/95		.XXXX	±.0005	FMF MGI-2.4B	
NO	REVISION	BY & DATE	CHK	ANG	±1/2°	PAGE OF	
THIRD ANGLE PROJECTION			RFP	PREV		SIZE	DRAWING NO
			NETWORK FILE NAME		00500501	<b>A</b>	<b>005005-01</b>
							REV
							--