

PRODUCT INFORMATION PACKET



Model No: C143C34FB6G

Catalog No: 120997.00

2HP..3450RPM.143.TEFC.115/230V.1PH.60HZ.SAW.NOT.40C.1.0SF.ROUND.WOODWORKING.C143C34F
B6G

Other Purpose



Regal and Leeson are trademarks of Regal Beloit Corporation or one of its affiliated companies.

©2018 Regal Beloit Corporation, All Rights Reserved. MC017097E





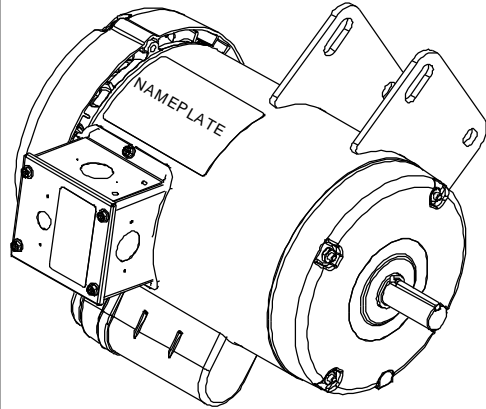
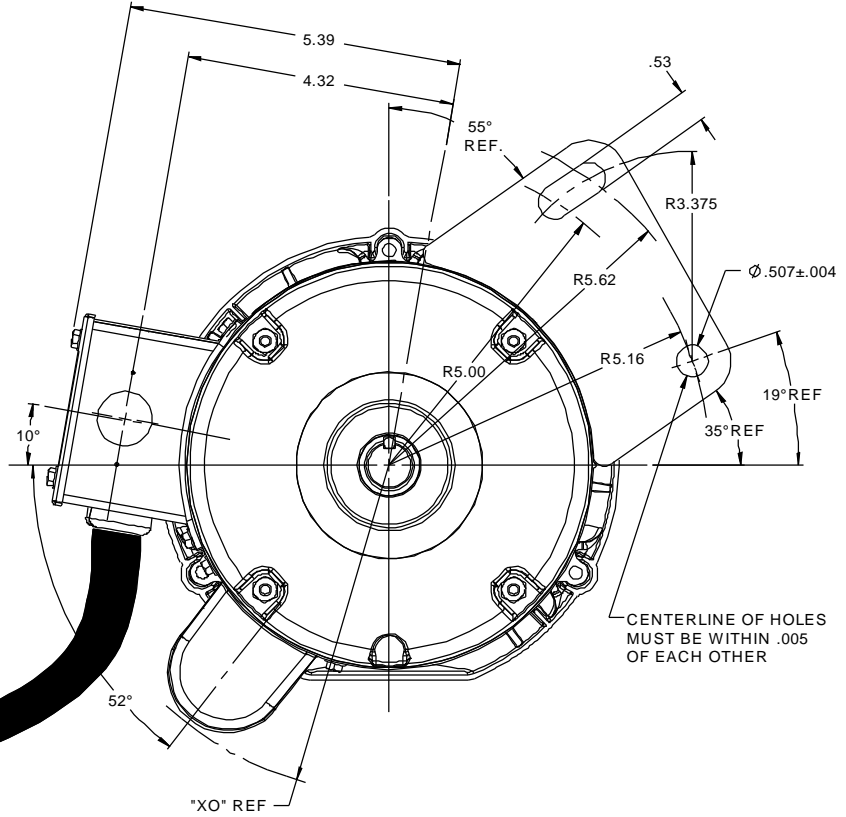
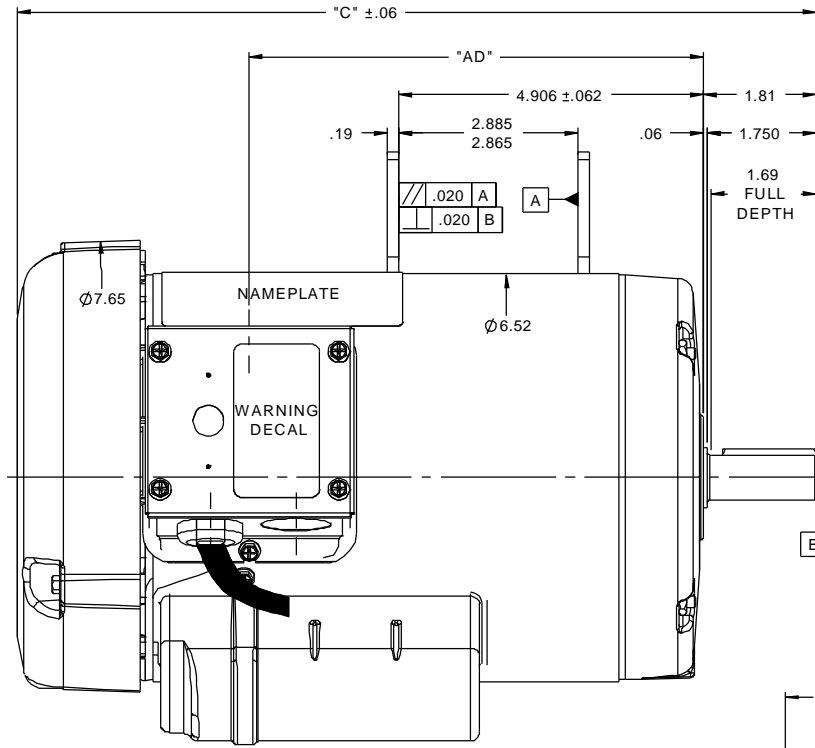
Nameplate Specifications

Output HP	2 Hp	Output KW	1.49 kW
Frequency	60 Hz	Voltage	115/230 V
Current	22/11 A	Speed	3450 rpm
Service Factor	1	Phase	1
Efficiency	71 %	Duty	SAW
Insulation Class	B	Design Code	L
KVA Code	J	Frame	143Y
Enclosure	TEFC	Overload Protector	NOT
Ambient Temperature	40 °C	Drive End Bearing Size	6205
Opp Drive End Bearing Size	6203	UL	Recognized
CSA	Y	CE	N
IP Code	43		

Technical Specifications

Electrical Type	CAP START IND RUN	Starting Method	ACROSS THE LINE
Poles	2	Rotation	FIXED CCW
Mounting	ROUND	Motor Orientation	HORIZONTAL
Drive End Bearing	BALL	Opp Drive End Bearing	BALL
Frame Material	ROLLED STEEL	Shaft Type	SGL SPL EXT
Overall Length	12.86 in	Frame Length	7.5 in
Shaft Diameter	0.75 in	Shaft Extension	1.75 in
Assembly/Box Mounting	F1 ONLY		
Outline Drawing	028924-750B	Connection Diagram	5062.01

RBC PROPRIETARY AND CONFIDENTIAL INFORMATION
 This document is the property of REGAL BELOIT CORPORATION ("RBC") including its subsidiaries and divisions and contains proprietary information of RBC. This document is loaned on the express condition that neither it nor the information contained therein shall be disclosed to others without the express written consent of RBC, and that the information shall be used by the recipient only as approved expressly by RBC. This document shall be returned to RBC upon its request. This document may be subject to certain restrictions under U.S. export control laws and regulations.



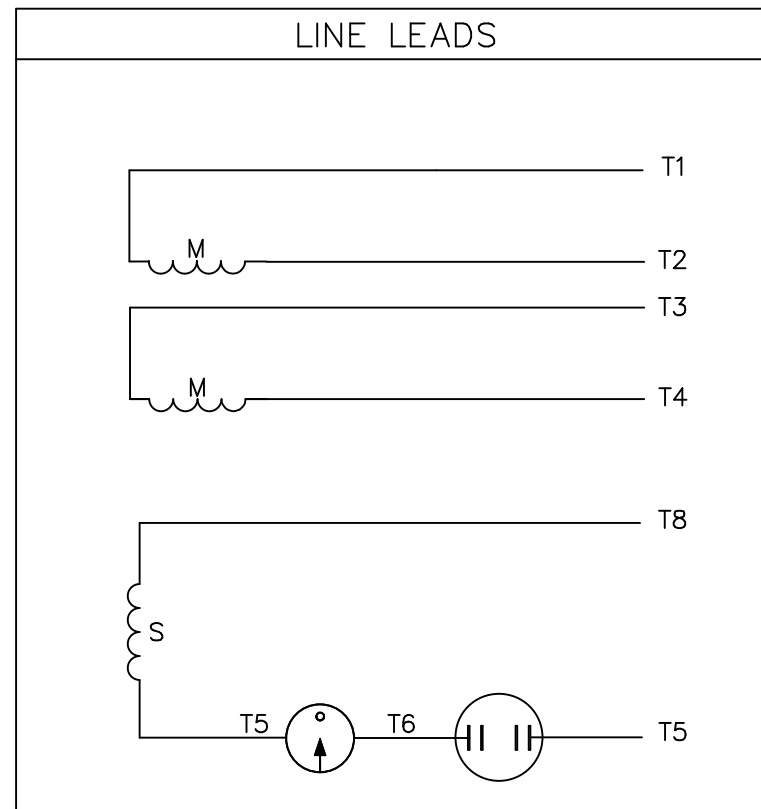
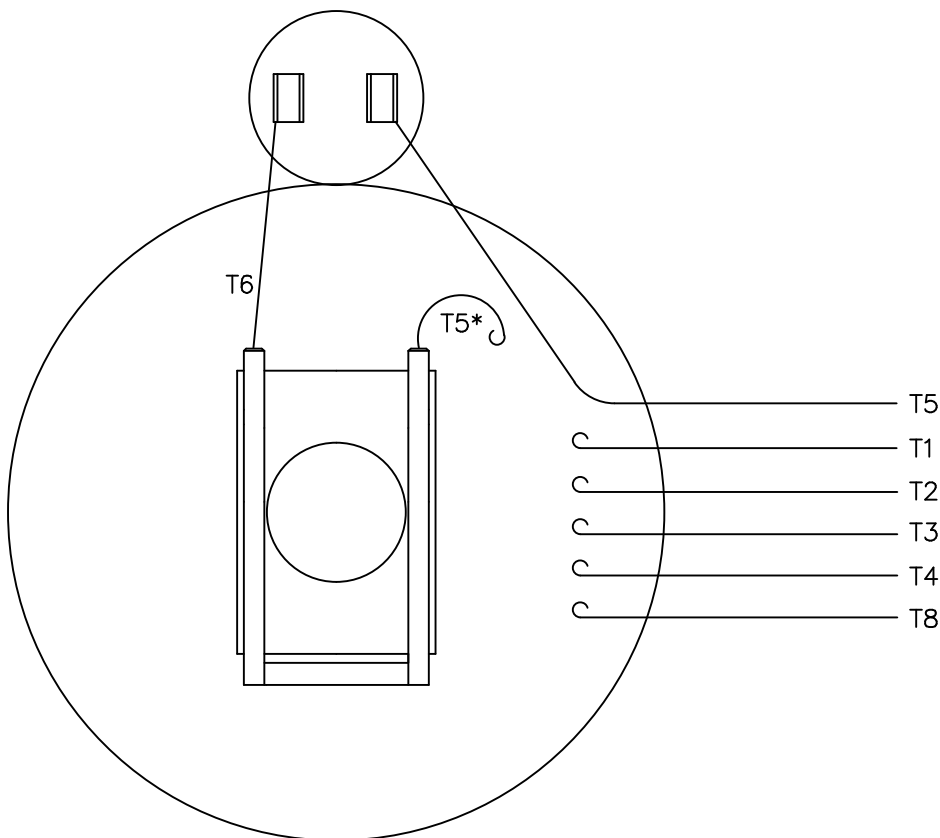
DASH NO.	"C"	"AD"	CAP DASH.	"XO"
700	12.36	6.74	A	5.17
750	12.86	7.24	B	5.55
			C	5.81

#14-3 TYPE SJOW/SJOOW
 300 VOLT CORD
 50" LONG MIN

NOTES:
 GASKETS THROUGHOUT

TOLERANCES UNLESS SPECIFIED		DEC INCHES		TITLE	ELECTRIC MOTORS GEARMOTORS AND DRIVES	DRAWN GRB 12/08/08
XX	±.03	XXX	±.005			
	X	±.1		TEFC - SPECIAL MOUNT <td></td> <td>APPR DJ 12/08/08</td>		APPR DJ 12/08/08
	XXX	±.005		MAT'L CONTRACTOR'S SAW <td></td> <td>SCALE 1:2</td>		SCALE 1:2
01	DIMENSIONED BASE HOLE ECR 0041996	GS	8/26/13	FINISH		REF 028635
	REVISION	BY & DATE	CHK ANG ±7'30"	PREV		FMF 120925.00
	THIRD ANGLE PROJECTION		RFP 12/08/08			PAGE 1 OF 1
			NETWORK FILE NAME 028924	SIZE B	DRAWING NO 028924	REV 01

VIEW FROM OUTSIDE OF MOTOR AT SWITCH END.



	ROTATION FACING LEAD END	L1	L2	JOIN
HIGH VOLT	C.C.W.	T1	T4 T5	T2, T3 T8
	C.W.	T1	T4 T8	T2, T3 T5
LOW VOLT	C.C.W.	T1, T3 T8	T2, T4 T5	---
	C.W.	T1, T3 T5	T2, T4 T8	---

* THIS LEAD MAY BE WHITE

		TOLERANCES UNLESS SPECIFIED		LEESON ELECTRIC MOTORS GEARMOTORS AND DRIVES		DRAWN JRW 12/05/74			
		DEC.	INCHES	ELECTRIC MOTORS GEARMOTORS AND DRIVES		CHK			
		.X	±.1	EXT. WIRING DIAGRAM TYPE "C" W/O PROTECTOR		APPD T.E.M.			
12	ALTERNATE T5 LEAD MARKING WAS RED	RLW	8/6/02	.XX	±.01	SCALE 1=1			
11	ADDED ALTERNATE T5 LEAD MARKING	RLW	5/31/02	KH	.XXX ±.005	REF A-005061			
10	UPDATED TO CURRENT STANDARDS	DBT	06/09/97		.XXXX ±.0005	FMF			
NO.	REVISION	BY & DATE	CHK	ANG	±1/2"	PREV			
THIS DRAWING IN DESIGN AND DETAIL IS OUR PROPERTY AND MUST NOT BE USED EXCEPT IN CONNECTION WITH OUR WORK ALL RIGHTS OF DESIGN AND INVENTION ARE RESERVED THIS IS AN ELECTRONICALLY GENERATED DOCUMENT - DO NOT SCALE THIS PRINT				RFP	CAD FILE	00506201	SIZE	DRAWING NO.	REV.
				DIST	NLV		A	005062-01	12