

PRODUCT INFORMATION PACKET



Model No: CM31D17NZ10D

Catalog No: M1120044.00

..1/7 - 1/4HP..1750RPM - 3500RPM.31.TENV.12V - 24V...CONT.40C.1.0SF.SQ.
FLANGE.CM31D17NZ10D.....DC SUB-FHP LOW VOLTAGE.....

Sub-Fractional



Regal and Leeson are trademarks of Regal Beloit Corporation or one of its affiliated companies.

©2018 Regal Beloit Corporation, All Rights Reserved. MC017097E





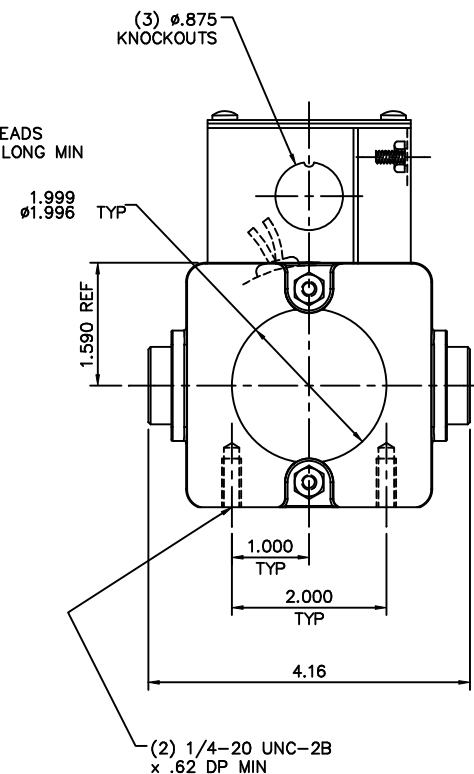
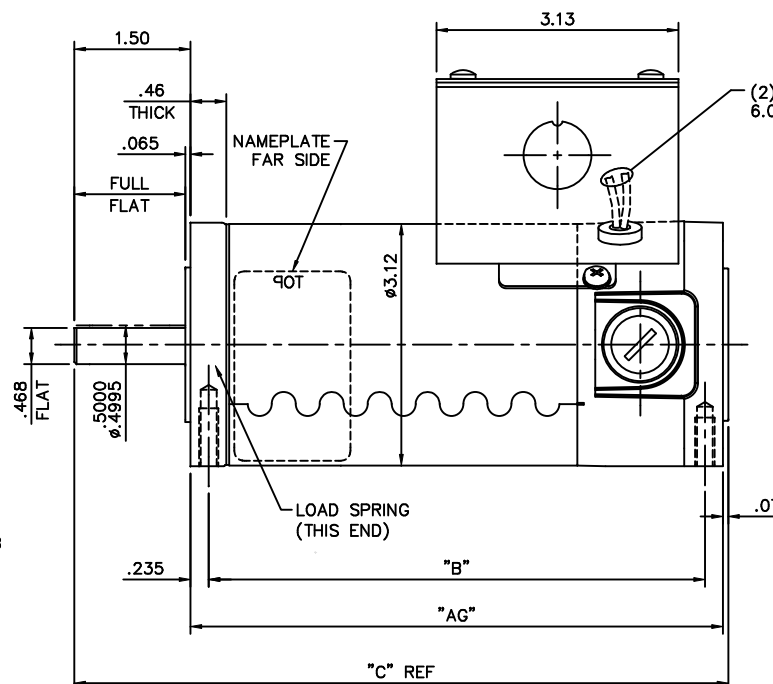
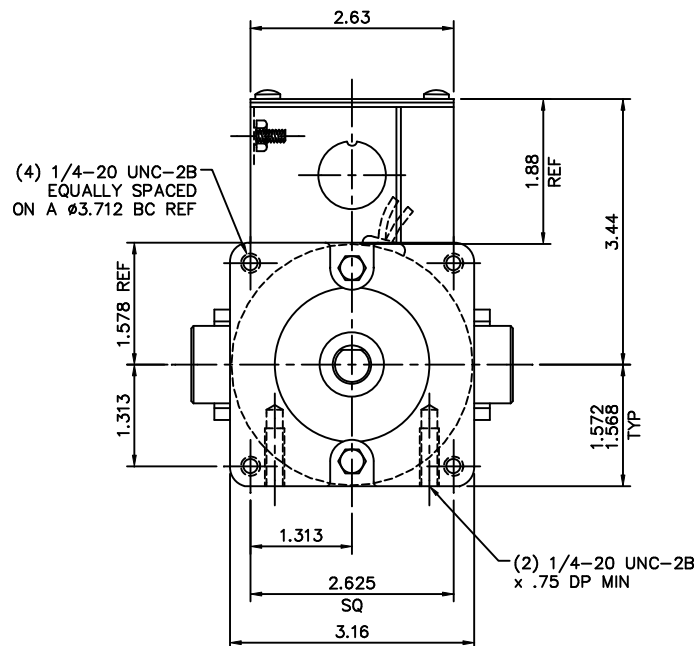
Nameplate Specifications

Output HP	0.14-0.25 Hp	Output KW	0.1-0.19 kW
Voltage	12-24 V	Current	13.0 A
Speed	1750-3500 rpm	Service Factor	1
Efficiency	71.6 %	Duty	Continuous
Insulation Class	F	Frame	31
Enclosure	Totally Enclosed Non Ventilated	Overload Protector	No
Ambient Temperature	40 °C	Drive End Bearing Size	6201-13
Opp Drive End Bearing Size	6201-13	UL	Recognized
CSA	Y	CE	Y

Technical Specifications

Rotation	Reversible	Mounting	Round
Overall Length	8.95 in	Frame Length	5.00 in
Shaft Diameter	0.500 in	Shaft Extension	1.5 in
Outline Drawing	M1031040-M1120044	Connection Diagram	M1005326


This is an uncontrolled document once printed or downloaded and is subject to change without notice. Date Created: 10/15/2018



NOTES:

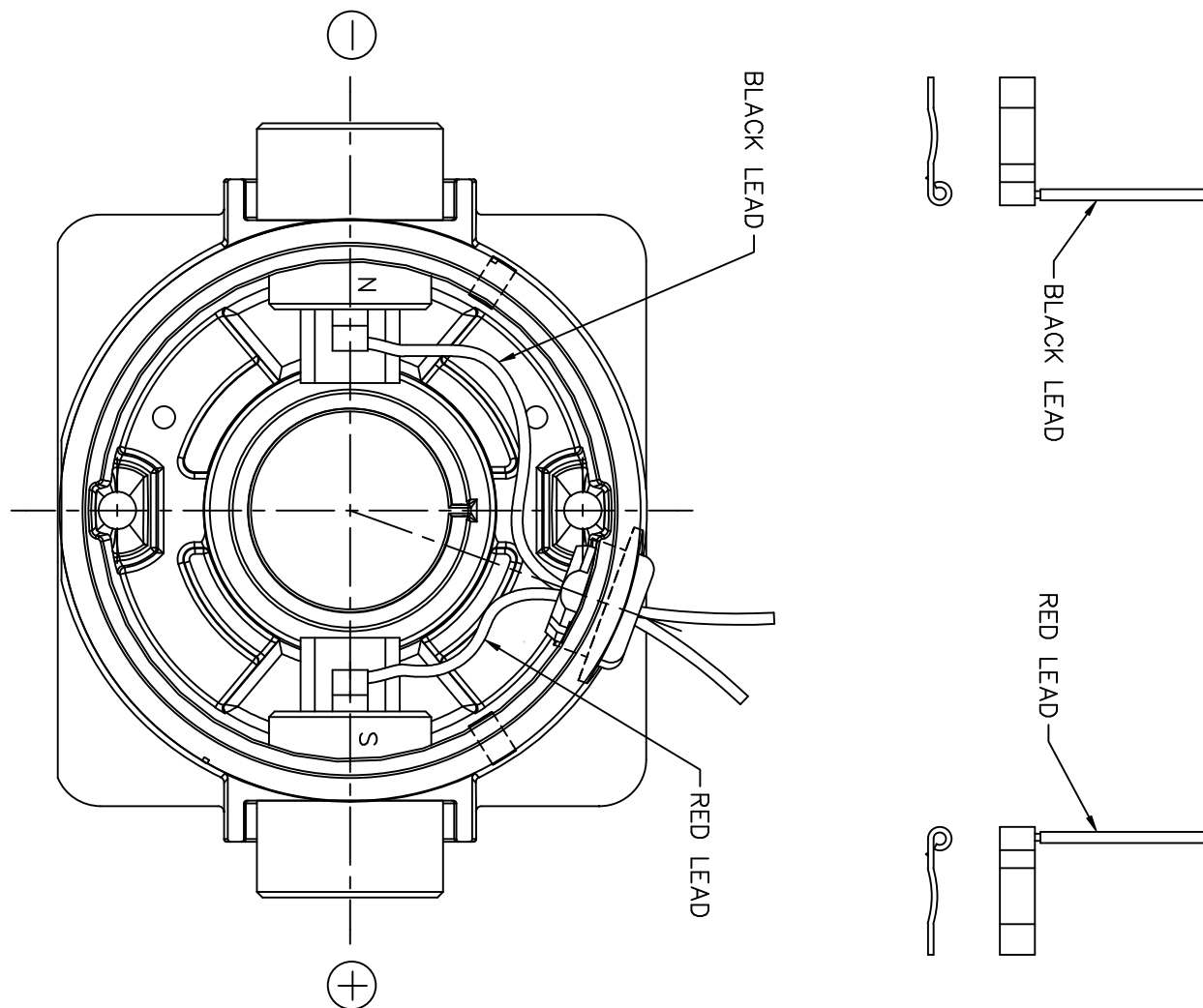
- 1) END CAP MOUNTING FEET TO BE PARALLEL TO EACH OTHER WITHIN .002


M1120046.00	7.88	7.42	9.45	12-24	1/6-1/3	1800-3900
M1120044.00	7.38	6.92	8.95	12-24	1/7-1/4	1750-3500
CATALOG NO.	"AG" DIM	"B" DIM	"C" DIM	VOLT	H.P.	RPM

			TOLERANCES UNLESS SPECIFIED		 ELECTRIC MOTORS GEARMOTORS AND DRIVES		DRAWN	IPG 12/13/06
02	ADDED M1120046.00 TO TABLE, ECN 07-1634	IPG 5/17/07	SAD	DEC.	INCHES		CHK	SAD 12/13/06
01	CORRECTED HP & RPM VALUES TO MATCH FRONT PAGE, PER SALES REQUEST	IPG 1/30/07	SAD	.X	±.1		APPD	
00	RELEASED: REF. M1031034.00, 31 TT FR CONSOLIDATION, ECN 06-4435	IPG 12/13/06	SAD	.XXX	±.005	TITLE	OUTLINE 31 FRAME DC	SCALE 5=8
				.XXXX	±.0005	MAT'L		REF M1031034.00
NO.	REVISION	BY & DATE	CHK	ANG	±1/2"	FINISH		FMF M1120044.00
							PREV	
THIS DRAWING IN DESIGN AND DETAIL IS OUR PROPERTY AND MUST NOT BE USED EXCEPT IN CONNECTION WITH OUR WORK. ALL RIGHTS OF DESIGN AND INVENTION ARE RESERVED. THIS IS AN ELECTRONICALLY GENERATED DOCUMENT - DO NOT SCALE THIS PRINT.			RFP	CAD FILE		M1031040	SIZE	DRAWING NO.
			DIST				B	M1031040.00
								REV 02

D.C. MOTORS

EXTERNAL CONNECTIONS FOR CCW ROTATION
VIEWING LEAD END OF MOTOR WITH RED LEAD
POSITIVE (+) AND BLACK LEAD NEGATIVE (-).
FOR CW ROTATION REVERSE POLARITY.



				TOLERANCES UNLESS SPECIFIED		<div></div> ELECTRIC MOTORS GEARMOTORS AND DRIVES			DRAWN IPG 12/13/06		
				DEC.	INCHES				CHK SAD 12/13/06		
				.X	±.1				APPD		
				.XX	±.01				SCALE 1=1		
				.XXX	±.005				REF M1005321.01		
00	RELEASED PER 31 TT FR CONSOLIDATION, ECN 06-4435	IPG 12/13/06	SAD	.XXXX	±.0005	MAT'L.			FMF M1120044.00		
NO.	REVISION	BY & DATE	CHK	ANG	±1/2"	FINISH			PREV		
THIS DRAWING IN DESIGN AND DETAIL IS OUR PROPERTY AND MUST NOT BE USED EXCEPT IN CONNECTION WITH OUR WORK ALL RIGHTS OF DESIGN AND INVENTION ARE RESERVED THIS IS AN ELECTRONICALLY GENERATED DOCUMENT - DO NOT SCALE THIS PRINT			RFP		CAD FILE M1005326			SIZE	DRAWING NO.		REV.
			DIST					A	M1005326.01		00