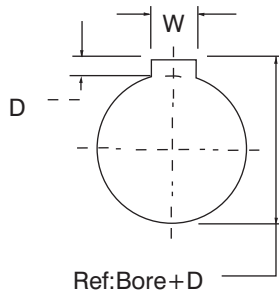




AK & BK CAST IRON SHEAVES

- Manufactured in high quality grey cast iron
- Finished bore with H7 precision
- Keyway and set screws in accordance with USAS. B. 17.1-1967
- OEM surface treatment available: paint or black phosphate - contact LEESON
- Individually packaged

V PULLEYS



ISO STANDARD METHOD
FOR MEASURING KEYSEAT
DEPTH

Depth measured at centerline.

Reference:

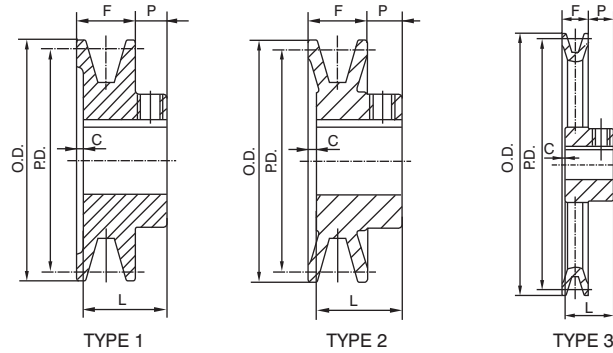
1 inch=25.4 millimeters

1 millimeter=0.3937 inches.

STANDARD KEYSEATS

Stock Bores	Keyseats	Stock Bores	Keyseats
1/2	None	1	1/4x1/8
9/16	1/8x1/16	1 1/16	1/4x1/8
5/8	3/16x3/32	1 1/8	1/4x1/8
11/16	3/16x3/32	1 3/16	1/4x1/8
3/4	3/16x3/32	1 1/4	1/4x1/8
13/16	3/16x3/32	1 3/8	1/4x1/8
7/8	3/16x3/32	1 3/8	1/4x1/8
15/16	1/4x1 1/8	1 7/16	3/8x3/16

AK SHEAVES



1 GROOVE • A or 3L-4L BELTS

Part Number	Diameter			Type	Dimensions				Stock Bores											Wgt. Lbs.
	O.D.	P.D. A	P.D. 3L		F	L	P	C	1/2	5/8	3/4	7/8	15/16	1	1 1/8	1 3/16	1 1/4	1 3/8	1 7/16	
AK17	1.75	1.50	1.16	1	21/32	15/16	7/16	5/32	●	●										0.2
AK20	2.00	1.80	1.46	1	21/32	15/16	7/16	5/32	●	●	●									0.3
AK21	2.10	1.90	1.56	1	21/32	15/16	7/16	5/32	●	●	●									0.4
AK22	2.20	2.00	1.66	1	21/32	15/16	7/16	5/32	●	●	●									0.5
AK23	2.30	2.10	1.76	1	21/32	15/16	7/16	5/32	●	●	●									0.5
AK25	2.50	2.30	1.96	2	21/32	15/16	7/16	5/32	●	●	●									0.6
AK26	2.60	2.40	2.06	2	21/32	15/16	7/16	5/32	●	●	●									0.6
AK27	2.70	2.50	2.16	2	21/32	15/16	7/16	5/32	●	●	●									0.6
AK28	2.80	2.60	2.26	2	21/32	15/16	7/16	5/32	●	●	●									0.7
AK30	3.05	2.80	2.46	2	21/32	15/16	7/16	5/32	●	●	●	●								0.7
AK32	3.25	3.00	2.66	2	21/32	15/16	7/16	5/32	●	●	●	●								0.8
AK34	3.45	3.20	2.86	2	21/32	15/16	7/16	5/32	●	●	●	●								0.9
AK39	3.75	3.50	3.16	2	3/4	15/32	15/32	1/16	●	●	●	●	●							1.4
AK41	3.95	3.70	3.36	2	3/4	15/32	15/32	1/16	●	●	●	●	●	●						1.5
AK44	4.25	4.00	3.66	3	3/4	15/32	15/32	1/16	●	●	●	●	●	●	●					1.5
AK46	4.45	4.20	3.86	3	3/4	15/32	15/32	1/16	●	●	●	●	●	●	●					1.6
AK49	4.75	4.50	4.16	3	3/4	15/32	15/32	1/16	●	●	●	●	●	●	●					1.7
AK51	4.95	4.70	4.36	3	3/4	15/32	15/32	1/16	●	●	●	●	●	●	●					1.7
AK54	5.25	5.00	4.66	3	3/4	15/32	15/32	1/16	●	●	●	●	●	●	●	●				1.8
AK56	5.45	5.20	4.86	3	3/4	15/32	15/32	1/16	●	●	●	●	●	●	●	●				1.9
AK59	5.75	5.50	5.16	3	3/4	15/32	15/32	1/16	●	●	●	●	●	●	●	●				2.0
AK61	5.95	5.70	5.36	3	3/4	15/32	15/32	1/16	●	●	●	●	●	●	●	●				2.1
AK64	6.25	5.00	5.66	3	3/4	15/32	15/32	1/16	●	●	●	●	●	●	●	●				2.2
AK66	6.45	6.20	5.86	3	3/4	15/32	15/32	1/16	●	●	●	●	●	●	●	●				2.3
AK69	6.75	6.50	6.16	3	3/4	1 15/32	23/32	—	●	●	●	●	●	●	●	●				3.5
AK71	6.95	6.70	6.36	3	3/4	1 15/32	23/32	—	●	●	●	●	●	●	●	●			●	3.8
AK74	7.25	7.00	6.66	3	3/4	1 15/32	23/32*	—	●	●	●	●	●	●	●	●	●		●	3.9
AK79	7.79	7.50	7.16	3	3/4	1 15/32	23/32	—	●	●	●	●	●	●	●	●	●		●	4.0
AK84	8.25	8.00	7.66	3	3/4	1 15/32	23/32*	—	●	●	●	●	●	●	●	●	●		●	4.2
AK89	8.75	8.50	8.16	3	3/4	1 15/32	23/32	—	●	●	●	●	●	●	●	●	●		●	4.3
AK94	9.25	9.00	8.66	3	3/4	1 15/32	23/32*	—	●	●	●	●	●	●	●	●	●		●	4.5
AK99	9.75	9.50	9.16	3	3/4	1 15/32	23/32	—	●	●	●	●	●	●	●	●	●		●	5.3
AK104	10.25	10.00	9.66	3	3/4	1 15/32	23/32*	—	●	●	●	●	●	●	●	●	●		●	5.7
AK109	10.75	10.50	10.16	3	3/4	1 15/32	23/32	—	●	●	●	●	●	●	●	●	●		●	5.8
AK114	11.25	11.00	10.66	3	3/4	1 15/32	23/32*	—	●	●	●	●	●	●	●	●	●		●	5.9
AK124	12.25	12.00	11.66	3	3/4	1 15/32	23/32*	—	●	●	●	●	●	●	●	●	●		●	6.5
AK134	13.25	13.00	12.66	3	3/4	1 15/32	23/32	—	●	●	●	●	●	●	●	●	●		●	7.5
AK144	14.25	14.00	13.66	3	3/4	1 15/32	23/32	—	●	●	●	●	●	●	●	●	●		●	8.5
AK154	15.25	15.00	14.66	3	3/4	1 15/32	23/32	—	●	●	●	●	●	●	●	●	●		●	9.8
AK184	18.25	18.00	17.66	3	3/4	1 15/32	23/32	—	●	●	●	●	●	●	●	●	●		●	12.1

*P=25/32 and C=1/16 for 1" Bore and smaller

V PULLEYS