

H.P.	Volts	Amps	RPM	Spd.	Model	Fig.	Type	Mtg.	Dia.	Rot.	"A" Dim.	Shaft Dia. and Length	Reference No.
AIR AMERICA CORP.													
▶ 1/8	115	3.3	1050	1	D1028	G	SP	Band	5.1	C.W.	3-1/2	1/2 x 2-1/2	A0510B2008
AMANA													
1/20-1/30-1/40	265	.4 .3 .2	1100	3	D1062#	D	PSC	Lug	5.1	C.W.	3-3/4	1/2 x 3-1/2	Amana C-6397902 Emerson K48HXCNB-1458 5KCP29FK52585
1/20-1/30-1/40	208-230	.4 .3 .2	1100	3	D1056# †	A	PSC	Lug	5.0	C.W.	3-5/8	1/2 x 3	Amana 900 Unit C-61147-5 5KCP29FK8865
1/20-1/30-1/40	265	.5-.3 .2	1100	3	D1058	E	PSC	Lug	5.0	C.W.	3-5/8	1/2 x 2-1/2	5KCP29FK8855 Amana C-61147-6
1/2-1/3	208-230	4-2.8	1075	2	D831■	F	PSC	Band	5.6	D.S.	6-3/4	7-1/8 x 1/2 x 7-1/8	Amana, Rheem/Ruud Luxaire, American Standard
—	115	1.95	3250	1	A129	H	SP	—	3.3	C.W.	—	—	AMANA, 7021-9064, 7021-9259
—	115	.7	3450	1	A158	I	PSC	—	3.3	C.W.	—	—	AMANA, 7062-3151
—	115	1.6	3000	1	A160	J	SP	—	—	C.W.	—	—	AMANA, 7002-2407
AMERICAN AIR FILTER													
▶ 1/6	277	.9	1600	1	D1065#	B	PSC	Band	5.0	C.C.W.	3-1/3	1/2 x 2-1/2	ZCAABWY15141 IWQ5827 5KCP29DK3697T
▶ 1/8	115	2.5	700	1	D827▲ •	C	PSC	Base	5.6	C.C.W.	5-1/2	1/2 x 2	7-150444-02

• Ball bearing motor # 4M 370V capacitor † Rotation is determined by viewing lug end. ▲ 6M 370V capacitor included
 ■ 7.5M 370V capacitor not included

NOTE: Rotation is determined by looking at shaft end. Shaft length is measured from motor face.



Fig. A D1056



Fig. C D827



Fig. E D1058



Fig. G D1028



Fig. I A158



Fig. B D1065



Fig. D D1062



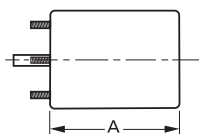
Fig. F D831



Fig. H A129



Fig. J A160



Products on this page are NOT SUITABLE for unattended equipment unless indicated by ▶ symbol. See inside back cover for additional information.

PSC motors use 5M 370V capacitors unless otherwise indicated.