

H.P.	Volts	Amps	RPM	Spd.	Model	Fig.	Type	Mtg.	Dia.	Rot.	"A" Dim	Shaft Dia. and Length	Reference No.
BUCK STOVE													
1/50-1/80-1/140	115	.88 .60-.45	1550	3	D1138	H	SP	Band	3.9	C.W.	4	5/16 x 2-1/2	R22CCW270ZD 7163-6045
1/50-1/80-1/125	115	.88 .61-.46	1550	3	D1139	I	SP	Stud	3.3	C.W.	2-13/16	2-1/2 x 5/16 x 1-1/8	R22CW206MD
BUTLER VENTILATOR													
▶ 1/10	115	3.6	1050	1	D1066	A	SP	Band	5.0	C.W.	3-7/8	1/2 x 2-3/4	846PY4V, 2414
CAMCO													
1/90	240	.3	1550	1	D1119	B	SP	Band	3.3	C.C.W.	2-1/4	1/4 x 1-1/2	Universal JB1PO4410V Electrohome 2868-405-173 Rotom R302
CARRIER													
1/30	115/230	1.3-.7	3000	1	D455*•	D	SP	Stud	3.3	C.C.W.	5-7/8	1/4 x 3-7/8	Draft Booster/ Flue Exhaust Switch Motors
1/15	115/230	2.0-1.0	3000	1	D456*•	C	SP	Stud	3.3	C.W.	6-1/2	1/4 x 2-3/4	
1/15	115/230	2.0-1.0	3000	1	D457*•	C	SP	Stud	3.3	C.C.W.	6-1/2	1/4 x 2-3/4	
1/15	208/230	1.0	3000	1	D458*•	C	SP	Stud	3.3	C.W.	6-1/2	1/4 x 2-3/4	
1/15	460	.6	3000	1	D1174†	C	SP	Stud	3.3	C.W.	6-3/4	1/4 x 2-1/2	Carrier HC34AU725A Universal JB1PO44NV HC24AU725
1/15	208-230	.45	3450	1	D1178•	G	PSC	Stud	3.3	C.W.	6-3/4	1/4 x 2-3/4	Carrier HC680001, Fasco 7162-3829
1/6-1/8-1/10	208-230	1.3-1.2 1.1	1040	3	D864■	F	PSC	Lug	5.6	C.W.	3-3/4	2-1/8 x 1/2 x 7-1/4	124279, 128560 124276, 7126-0103 7126-0043
1/5	230	1.3	1075	1	D842#	E	PSC	Lug	5.6	C.W.	3-3/4	1/2 x 3-1/4	HC37VE230 Cond. round unit
1/5-1/6-1/8	265-277	1.1-.8 .7	1040	3	D848■	F	PSC	Lug	5.6	C.W.	3-1/2	3 x 1/2 x 7	51PH124275 HC37MB-730

• Ball bearing motor # 4M 370V capacitor † 3M 370V capacitor † Does not have shaft bushing.

* Includes shaft bushing ■ Rotation is determined by viewing lug end

NOTE: Rotation is determined by looking at shaft end. Shaft length is measured from motor face.



Fig. A D1066



Fig. C D456, D457, D458, D1174



Fig. E D842



Fig. G D1178



Fig. I D1139



Fig. B D1119



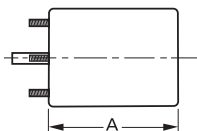
Fig. D D455



Fig. F D848, D864



Fig. H D1138



Products on this page are NOT SUITABLE for unattended equipment unless indicated by ▶ symbol. See inside back cover for additional information.

PSC motors use 5M 370V capacitors unless otherwise indicated.