

H.P.	Volts	Amps	RPM	Spd.	Model	Fig.	Type	Mtg.	Dia.	Rot.	"A" Dim	Shaft Dia. and Length.	Reference No.
CARRIER													
1/30	208-230	.65	3000	1	D463•	I	SP	Stud	3.3	C.W.	3-7/8	5/16 x 2-1/2	HC24HE230
1/16	208-230	.57	3450	1	D1182■	J	PSC	Stud	3.3	C.C.W.	4-1/2	5/16 x 3-1/3	7162-3367 HC30GB230B K33HXCCP-915 HC30GB230
1/15	230/460	1.2/0.6	3000	1	D459•	H	SP	Stud	3.3	C.W.	7	1/4 x 3	HC24AU725A, JB1P044 AB15078, JB1R039, AB15029
1/4	230	1.5	1625	1	D844#	D	PSC	Lug	5.6	C.W.	3-1/2	1/2 x 3	HC37ME268 5KCP39BG75245
1/4-1/5	208-230	2.2-2.0	1075	2	D843§	B	PSC	Lug	5.6	Rev.	4	1/2 x 4-1/4	F48SG6MA10, F48SG6MA16 F48SG6MA28, F48SG6MA37 F48S16MA28, HC37MZ220, HC39VE608 HC39ML706, HC39ME720
1/2	460	.9	1050	1	D802*•	G	PSC	Stud, Band	5.6	Rev.	5-1/2	1/2 x 3-1/3	Carrier HC44VL463A, AO Smith FEH1056S GE 5KCP39PGH600CS
1/2	208-230	5.3	1075	1	D804*+	A	PSC	Base, Band	5.6	C.W.	6-1/2	1/2 x 6	5KCP39PGC138S
1/2	230/460	3.9/2.0	1075	1	S2846*★	E	PSC	Band, Base	5.6	Rev.	6-1/2	1/2 x 5-3/8	Canopy Type Outdoor Condenser Fan Motor
3/4-1/2-1/3-1/4	115	11.2-9.1 7.5-6.4	1075	4	D838	C	PSC	Band	5.6	Rev.	5-1/4	1/2 x 6-1/2	HC45SE116, SC435X101, HC43SE116
3/4	230/460	4.7/2.4	1075	1	S2848*‡	F	PSC	Band, Base	5.6	Rev.	7-3/4	1/2 x 6	Canopy Type Outdoor Condenser Fan Motor

• Ball bearing motor # 4M 370V capacitor * 10M 370V capacitor § 5M 440V capacitor
 + 7.5M 370V capacitor ‡ 20M 370V capacitor ★ 7.5M 440V capacitor ■ Has hall effect sensor

NOTE: Rotation is determined by looking at shaft end. Shaft length is measured from motor face.



Fig. A D804



Fig. C D838



Fig. E S2846



Fig. G D802



Fig. I D463



Fig. B D843



Fig. D D844



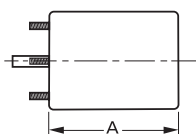
Fig. F S2848



Fig. H D459



Fig. J D1182



Products on this page are NOT SUITABLE for unattended equipment unless indicated by ► symbol. See inside back cover for additional information.

PSC motors use 5M 370V capacitors unless otherwise indicated.