

CARRIER/BLOWER WHEELS						
Model	Diameter	Width	Rot.	Fig.	Bore	Replaces
1-6051	3-27/32	1-13/64	C.C.W.	A	1/4	Flue Exhaust & Draft Booster LA21RB327
1-6052	4-1/4	2-15/16				LA21RA425
1-6113	3-27/32	1	C.W.	A	1/4	Flue Exhaust & Draft Booster LA21ZA038
1-6114	3-27/32	1-1/4	C.W.	A	1/4	Flue Exhaust & Draft Booster
1-6133	4	2-1/2	C.C.W.	B	1/4	Gas Furnace Draft Inducer
1-6141	4	1-1/2	C.C.W.	A	5/16	P441-1146, LA11AA004
1-6143	5-3/4	1-1/2	C.C.W.	A	5/16	LA11AD056, LA11ZD058

NOTE: Blower wheel rotation is determined by viewing back plate.

H.P.	Volts	Amps	RPM	Spd.	Model	Fig.	Type	Mtg.	Dia.	Rot.	"A" Dim	Shaft Dia. and Length.	Reference No.
CARRIER/WHIRLPOOL													
1/15-1/25	115	.9-.8	1550	2	D1176#	E	PSC	Stud	3.3	D.S.	4	4-7/8 x 3/8 x 4-7/8	130096, 202466
CHAMPION COOLER													
1/10-1/15	115	3.5-2.2	1040	2	D1069	F	SP	Stud	5	D.S.	2-5/8	3 x 3/8 x 3 w/ bushings	7151-2925 7151-0109 MP2500
CHROMALOX													
1/30	240	.6	1550	1	D1118•	C	S.P.	Lug	3.3	C.W.	2-13/16	5/16 x 3-1/2	2868-811-005B, 2868-505-016, 2686-511-027A
CHRYSLER AIRTEMP													
1/5-1/6-1/8	208-230	1.6-1.1 1.0	1100	3	D1022■	D	PSC	Lug	5.0	C.W.	3-7/8	2-3/8 x 1/2 x 2-3/4	3704387, 2874493 2874495

4M 370V capacitor ■ Rotation is determined by viewing lug end. • Ball bearing motor

NOTE: Rotation is determined by looking at shaft end. Shaft length is measured from motor face.



Fig. A 1-6051, 1-6052, 1-6113, 1-6114, 1-6141, 1-6143



Fig. C D1118



Fig. E D1176



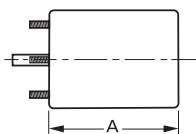
Fig. B 1-6133



Fig. D D1022



Fig. F D1069



Products on this page are NOT SUITABLE for unattended equipment unless indicated by ► symbol. See inside back cover for additional information.

PSC motors use 5M 370V capacitors unless otherwise indicated.