

| H.P. | Volts | Amps | RPM | Spd. | Model | Fig. | Type | Mtg. | Dia. | Rot. | "A" Dim | Shaft Dia. and Length. | Reference No. |
|---|---------|-------------------|------|------|-------|------|------|------------|------|--------|---------|---------------------------|--|
| FEDDERS (continued on next page) | | | | | | | | | | | | | |
| 1/80 | 115 | .6 | 1500 | 1 | D441 | A | SP | Stud | 3.3 | C.C.W. | 2-1/8 | 1/4 x 1 Threaded w/Driver | Fedders, Oasis Whirlpool Port. Dehumidifiers |
| 1/20 | 460 | .4 | 1550 | 1 | D186 | H | SP | Stud | 3.3 | C.W. | 2-7/8 | 5/16 X 2-1/3 | Roof Top AC |
| 1/15-1/20-1/25 | 115 | 2.3 1.9 1.6 | 1550 | 3 | D1012 | B | SP | Stud | 4.4 | D.S. | 3-3/8 | 3 x 3/8 x 3 | RMR, RY1302, S206-00025-001 Y24CW50, 7190-0163 |
| 1/10-1/20 | 230 | 1.5-1.0 | 1050 | 2 | D1015 | C | SP | Base | 5.0 | D.S. | 3-1/4 | 2-5/8 x 1/2 x 2-5/8 | Window AC Motors, S196-10-6 and S196-101-6 |
| 1/8-1/12-1/15 | 115 | 4.4-3.0 2.3 | 1050 | 3 | D1010 | D | SP | Stud, Base | 5.0 | D.S. | 3-3/8 | 3-1/3 x 1/2 x 2-3/4 | Window AC Motor S196-20-2 |
| 1/6-1/12-1/15 | 208-230 | 2.5-1.6 1.2 | 1050 | 3 | D1011 | D | SP | Stud, Base | 5.0 | D.S. | 3-1/4 | 3-1/3 x 1/2 x 2-3/4 | Window AC Motors S196-42-1 and S296-161-3 |
| 1/6-1/8-1/10 | 115 | 2.3-2.0 1.8 | 1050 | 3 | D884 | G | PSC | Stud | 5.6 | D.S. | 3-3/4 | 5 x 1/2 x 4 | S196-59-1, 2:72-1,2:73-1,2:74-1,2,3 |
| 1/5 | 230 | 1.5 | 1080 | 1 | D882+ | E | PSC | Stud | 5.6 | C.W. | 3-1/2 | 1/2 x 4-1/4 | Condenser Fan S196-179-1 |
| 1/4 | 230 | 2.0 | 1100 | 1 | D1016 | F | PSC | Base | 5.0 | C.W. | 3-7/8 | 1/2 x 4-1/8 | Condenser Fan S196-18-2 |

+ 7.5M 370V cap installed

NOTE: Rotation is determined by looking at shaft end. Shaft length is measured from motor face.



Fig. A D441



Fig. C D1015



Fig. E D882



Fig. G D884



Fig. B D1012



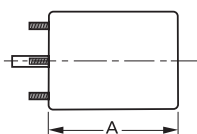
Fig. D D1010, D1011



Fig. F D1016



Fig. H D186



Products on this page are NOT SUITABLE for unattended equipment unless indicated by ► symbol. See inside back cover for additional information.

PSC motors use 5M 370V capacitors unless otherwise indicated.