

Replacement Models

H.P.	Volts	Amps	RPM	Spd.	Model	Fig.	Type	Mtg.	Dia.	Rot.	"A" Dim	Shaft Dia. and Length	Reference No.
GENERAL ELECTRIC													
1/5-1/8	208-230	1.1-.7	1625	2	D896#	A	PSC	Stud	5.6	C.C.W. L.E.	3-3/4	2-7/8 x 1/2 x 2-1/4	KCP39DGD779S, WJ94X0518
1/5-1/6-1/8-1/10	230	1.5-1.1 1.0-.8	1075	4	D897# ■	B	PSC	Lug	5.6	C.W.	3-3/4	2-3/8 x 1/2 x 2-1/2	KCP39EG5480S 5KCP39DGK014T 5KCP39EG5480S WP94X1, WJ94X162
1/5-1/8-1/10	265	1.3-.9 .7	1075	3	D898 # ■	B	PSC	Lug	5.6	C.W.	3-3/4	2-3/8 x 1/2 x 2-1/2	KCP39EG5967S 5KCP39DGK013T WP94X2, WP94X213, WP94X214, WP94X299, WP94X505
1/6-1/10	265	.9-.5	1075	2	D893#	D	PSC	Lug	5.6	C.C.W.	3-1/2	1/2 x 2-1/8	WP94X0004 (Stock) 5KCP39CGF467S
1/6	277	.8	1650	1	D894	D	PSC	Lug	5.6	C.W.	3-3/4	1/2 x 2-1/4	5KCP39CGP727S
1/8	230	1.1	1550	1	D1050‡	C	PSC	Band	5.0	C.W. O.L.E.	3-1/4	1/2 x 3	A/C Condenser KSP29DK1728S
1/8	230	1.1	1550	1	D264	C	PSC	Band	5.0	R.E.V.	3-1/4	1/2 x 5	A/C Cond. Fan Motor
1/12-1/25	277	.6-.2	1625	2	D1086	E	PSC	Base	5.0	C.C.W.	3-1/4	6-1/2 x 1/2 x 6-1/2	5KCP29CK3586AS
GIBSON-BELDING & KELVINATOR													
1/5-1/8-1/10	230	1.7 1.4-1.1	1050	3	D852 ■	F	PSC	Lug	5.6	D.S.	3-3/4	5 x 1/2 x 4-1/2	G519203, Window A/C Franklin No., 80431
1/3-1/4-1/5	230	2.0 1.9-1.8	1090	3	D1853 ■	G	PSC	Lug	5.6	D.S.	4-1/4	6 x 1/2 x 2-7/8	G519243, G505976 K55HXNEC-6830
1/3-1/4-1/6	208-230	2.8-1.7 1.2	1365	3	D854° ■	H	PSC	Lug	5.6	D.S.	4-1/2	4-1/2 x 1/2 x 2-5/8	Franklin X157668 X152275, 82181
1/3-1/4-1/5	230	2.7-2.0 1.7	1365	3	D855°	I	PSC	Band, Stud	5.6	D.S.	4-1/4	8 x 1/2 x 8-3/4	RAK7024
1/3-1/4-1/5	230	3.1	1300	3	D856 ■	J	PSC	Lug Base	5.6	D.S.	5	5-1/4 x 1/2 x 3	G519244, G505971 K55HXNEM6844
1/15-1/20-1/25	115	1.5-1.0 .9	1550	3	D1112° ■	K	PSC	Lug	3.3	D.S.	4	2-5/8 x 5/16 x 2-7/8	506601 507007 506720 80126

4M 370V capacitor

■ Rotation is determined by viewing lug end.

‡ Original motor is Shaded Pole, D1050 is PSC to provide greater motor efficiency and permit closing shaft end of motor to prevent moisture from entering motor

° 3M 370 capacitor

NOTE: Rotation is determined by looking at shaft end. Shaft length is measured from motor face.



Fig. A D896



Fig. D D893, D894



Fig. F D852



Fig. H D854



Fig. J D856



Fig. B D897, D898



Fig. E D1086



Fig. G D1853



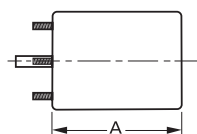
Fig. I D855



Fig. K D1112



Fig. C D264, D1050



Products on this page are NOT SUITABLE for unattended equipment unless indicated by ► symbol. See inside back cover for additional information.

PSC motors use 5M 370V capacitors unless otherwise indicated.