

H.P.	Volts	Amps	RPM	Spd.	Model	Fig.	Type	Mtg.	Dia.	Rot.	"A" Dim	Shaft Dia. and Length	Reference No.
<b>GOODMAN</b>													
—	115	1.4	3400	1	A140	I	SP	—	3.3	C.W.	—	—	7021-9087, 7021-9000
—	115	7.3	3000	1	A157	J	SP	—	—	C.C.W.	—	—	7002-2307
—	208-230	.5	3000	1	A162	K	SP	—	3.3	C.C.W.	—	—	7021-8656
—	115	1.1	3000	1	A079	L	SP	—	3.3	C.C.W.	—	—	7021-6804
<b>GREENHECK FAN</b>													
▶ 1/20-1/30-1/60	115	2.0-1.7 1.4	1550	3	D1061	D	SP	Stud, Base	4.4	C.C.W.	4-1/8	1/2 x 2-3/4	7108-2425
<b>HEAT N GLOW</b>													
—	115	1.2	3000	1	A133	M	SP	—	—	—	—	—	7002-1241
<b>HEIL-QUAKER</b>													
64CFM	115	.7	3150	1	A064	E	SP	—	3.3	C.W.	—	—	610672, 7021-5043
1/6	208-230	1.0	1100	1	D2810	B	PSC	Band	5.6	C.C.W.	4	1/2 x 2	HQ 1050892EM, KA55HXHNK-2379
1/6	208-230	.99	1100	1	D1071	C	PSC	Band	5.1	Rev.	3-7/8	1/2 x 2-1/8	HQ 1052662EM 48HXCLW-1562
—	208-230	.5	3000	1	A148	G	SP	—	3.3	C.C.W.	—	—	HEIL QUAKER, 7021-9237
—	230	.3	2800	1	A151	H	SP	—	3.3	C.W.	—	—	INTER CITY, HQ1050144
<b>HERMAN NELSON</b>													
1/4	115	3.8	825	1	D829	F	PSC	Base	5.6	Rev.	5-5/8	1/2 x 2	—
1/4	115	4.3	1050	1	D880•	A	PSC	Base	5.6	C.C.W.	5-1/2	1/2 x 1-1/2	—
▶ 1/8	115	2.5	700	1	D827•	A	PSC	Base	5.6	C.C.W.	5-1/2	1/2 x 2	7-150444-02
<b>HILL REFRIGERATION</b>													
1/3	208-230	2.9	1625	1	D801	N	PSC	Base	5.6	C.C.W.	4-1/2	1/2 x 4	5KCP39KG1369S
1	208/ 230	7.1-6.4	1075	1†	D800•†△	O	PSC	Base	5.6	C.W.	5-1/4	1/2 x 3-3/4	PP19162G, 5KCP39PGC030S 5KCP39PGC910S

• Ball bearing motor    † 15M 370V capacitor    △ Separate connection for each voltage  
**NOTE:** Rotation is determined by looking at shaft end. Shaft length is measured from motor face.



**Fig. A D827, D880**



**Fig. D D1061**



**Fig. G A148**



**Fig. J A157**



**Fig. M A133**



**Fig. B D2810**



**Fig. E A064**



**Fig. H A151**



**Fig. K A162**



**Fig. N D801**



**Fig. C D1071**



**Fig. F D829**



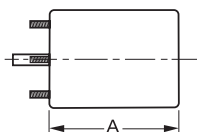
**Fig. I A140**



**Fig. L A079**



**Fig. O D800**



Products on this page are NOT SUITABLE for unattended equipment unless indicated by ▶ symbol. See inside back cover for additional information.

PSC motors use 5M 370V capacitors unless otherwise indicated.