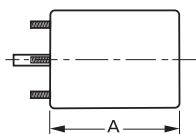


H.P.	Volts	Amps	RPM	Spd.	Model	Fig.	Type	Mtg.	Dia.	Rot.	"A" Dim	Shaft Dia. and Length	Reference No.
<b>HONEYWELL AIR CLEANER</b>													
▶ 1/12-1/20-1/25	115	3.1-2.1 1.5	1050	3	D1054	E	SP	Band	5.0	C.W.	2-5/8	1/2 x 2-1/2	190386A 5KSP29DK19065
<b>HUSSMANN</b>													
1/6	208-230	1.2	1625	1	D807*#	A	PSC	Stud, Base	5.6	C.C.W.	3-3/4	1/2 x 4-7/8	5KCP39EGC244T 5KSP39FG47715
1/2	208-230	2.7	1725	1	D890	F	PSC	Stud	5.6	C.C.W.	4.5	1/2 x 3-1/2	259983 K55HXCTP-9963
1/500	120	.64	1100	1	K114^	G	SP	Stud	-	C.W.	-	.181 X 1-3/4	301-5734
<b>ILG</b>													
▶ 1/12	115/230	2.5-1.3	1550	1	D115	B	SP	Stud	4.4	C.C.W.	4-1/8	1/2 X 2	78-27-721T Fasco 7108-2237
▶ 1/10	115	3.1	1610	1	D1039	D	SP	Stud Band	4.4	C.C.W.	4-1/2	1/2 X 2-3/8	78-27-611N Fasco 7108-2171
<b>INTER CITY</b>													
1/40	208/230	.55	3000	1	D1167	C	SP	Lug	3.3	C.C.W.	4-7/8	5/16 x 1	1708-518, 7121-5854
—	115	1.5	3060	1	A134	H	SP	—	3.3	C.W.	—	—	INTER CITY, 7021-9335, 7021-8735, 7021-9499, 7021-8736, 7021-9499
—	115	0.7	3450	1	A145**	I	PSC	—	3.3	C.C.W.	—	—	INTER CITY, 7062-4061
—	115	1	2800	1	A141	J	SP	—	3.3	C.W.	—	—	INTER CITY, 7021-8741, 7021-8742, 7021-9188, 7021-9 498
—	208-230	0.5	3000	1	A148	K	SP	—	3.3	C.C.W.	—	—	INTER CITY, 7021-7617, 7021-9237
—	230	0.3	2800	1	A151	L	SP	—	3.3	C.W.	—	—	HEIL QUAKER HQ1050144
—	230	.75	2800	1	A169	M	SP	—	3.3	C.W.	—	—	ICP 7021-10048, 7021-10580
—	115	2.3	2800	1	A170	N	SP	—	3.3	C.W.	—	—	ICP 7021-10702, 7021-10299

**NEW**  
**NEW**

\* Ball bearing motor # 4M 370V capacitor ^ Equipped with KFAN6046 fan blade \*4M 250V capacitor included

NOTE: Rotation is determined by looking at shaft end. Shaft length is measured from motor face.



Products on this page are NOT SUITABLE for unattended equipment unless indicated by ▶ symbol. See inside back cover for additional information.

PSC motors use 5M 370V capacitors unless otherwise indicated.