

H.P.	Volts	Amps	RPM	Spd.	Model	Fig.	Type	Mtg.	Dia.	Rot.	"A" Dim	Shaft Dia. and Length	Reference No.
LEAR SIEGLER													
▶ 1/8	115	5.1	1070	1	D1046	A	SP	Base	5.0	C.W.	3"	1/2 x 2-1/4	305313-000-165 7151-0073, 7151-2826
LENNOX													
1/30	115	1.5	3000	1	D1198	J	SP	Lug	3.3	C.C.W.	3-1/8	5/16 x 2-1/3	7121-8774
1/4	230	1.9	1075	1	D814 #	B	PSC	Base	5.6	C.W.	3-3/4	1/2 x 3	P-8-2702, 5KCP39GGA124S
1/3-1/4-1/6-1/8	115	6.1-3.2 2.2-1.6	1075	4	D812	C	PSC	Base	5.6	C.W.	4-1/4	1/2 x 3-1/8	P-8-7505
1/3	208-230	2.2	1075	1	D816	D	PSC	Lug	5.6	C.W.	4	1/2 x 3-3/4	P-8-8041-A3048, 5KCP39HG0766T
1/3-1/5-1/6	115	7.3-5.1 3.9	825	3	D818∞	E	PSC	Base	5.6	C.W.	6-3/4	1/2 x 3	P-8-8325 5KCP39PGD698S
1/3	230	3.2	825	1	D2817	F	PSC	Base, Band	5.6	Rev.	5-3/4	1/2 x 6	5KCP39PG9701S, 5KCP39PG3490AS
1/2	230	2.6	1050	1	D2814 §	G	PSC	Base	5.6	C.W.	5-3/4	1/2 x 3-1/4	P-8-5770
3/4-1/2-1/3	230	5.9-3.0- 2.4	1075	3	D813♦	H	PSC	Base	5.6	DS	6	5-1/4 x 5/8 x 6-1/2	31C8201, K55HXRYT-8180, K63BHXHW-1158, 5KCP49NG1009, 5KCP35SN49S, P-8-6426
—	120	0.7	3000	1	A138	K	SP	—	3.3	C.C.W.	—	—	LENNOX, 7021-8657, 7021-8825
—	120	0.7	3000	1	A135	L	SP	—	3.3	C.C.W.	—	—	LENNOX, 7021-8812, 7021-8819
—	115	1.8	3400	1	A163	M	SP	—	3.3	C.C.W.	—	—	LENNOX, 7021-9450
—	120	0.8	3000	1	A164	N	SP	—	3.3	C.C.W.	—	—	LENNOX, 7021-9593
3/4-1/3	230	5.0-2.2	1075	2	D2818 ▶★	I	PSC	Base	5.6	Rev.	7-3/4	5/8 x 4-1/2 (Keyed)	P-8-8711 5KCP49SG1010S
1-1/2-1/3	115	11.8- 6.3-3.9	1075	3	D2816 ▶♦	I	PSC	Base	5.6	Rev.	7-3/4	5/8 x 4	P-8-8326, 5KCP49SG1053S

• Ball bearing motor ▶ Not a direct replacement for 5KCP49SG1010S, but is an acceptable substitute
 ★ 15M 370V capacitor ♦ 10M 370V capacitor # 4M 370V capacitor ∞ 12.5M 370V capacitor
 § 5M 370V capacitor ▶ 20M 370V capacitor

NOTE: Rotation is determined by looking at shaft end. Shaft length is measured from motor face.



Fig. A D1046



Fig. D D816



Fig. G D2814



Fig. J D1198



Fig. M A163



Fig. B D814



Fig. E D818



Fig. H D813



Fig. K A138



Fig. N A164



Fig. C D812



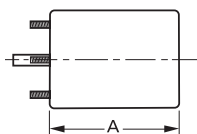
Fig. F D2817



Fig. I D2816, D2818



Fig. L A135



Products on this page are NOT SUITABLE for unattended equipment unless indicated by ▶ symbol. See inside back cover for additional information.

PSC motors use 5M 370V capacitors unless otherwise indicated.