

Replacement Models

H.P.	Volts	Amps	RPM	Spd.	Model	Fig.	Type	Mtg.	Dia.	Rot.	"A" Dim	Shaft Dia. and Length	Reference No.
LOMANCO													
NEW 1/3	115	1.1	1550	1	D1008	K	SP	Lug	4.4	C.W.	3	1/2 x 1-7/8	OLM6151, 322P151
MAGIC CHEF													
1/4	208-230	2.2	1075	1	D1091	I	PSC	Band	5	C.C.W.	4-1/2	1/2 x 2-3/4	350358001, 322P859, DE3L038
—	230	.5	3000	1	A081*^†	J	SP	—	3.3	C.C.W.	—	—	350358001, 322P859, DE3L038
MATHIESEN													
1" Stack	115	1.1	3000	1	K161	H	SP	Stud	—	C.C.W.	—	.2178 x 1.15	Many Freezer Case Applications
MCMILLAN													
NEW 1/10-1/20	115	3.9/1.7	1050	2	D177	L	SP	Stud	5.12	C.C.W.	2-5/8	3/8 x 3-5/8	6125-366/6
McQUAY													
1/25-1/35-1/65	115	1.1-9-6	1200	3	D1144 #	B	PSC	Stud	3.3	C.W.	4-3/4	3/8 x 5-5/8	BA2H015
1/15	115/230	1.7-9	1500	1	D1142	A	SP	Stud	3.3	C.W.	3-1/2	5/16 x 2-1/2	879-382-562 ZB-00
1/10-1/12-1/15	115	2.2-2.0 1.7	1500	3	D1140 +	C	PSC	Base	3.3	D.S.	4-3/4	5-5/8 x 3/8 x 5-5/8	879-382564B-00
1/15-1/25-1/35	115	1.7 1.1-9	1000	3	D1141 #	C	PSC	Base	3.3	D.S.	4-3/4	5-5/8 x 3/8 x 5-5/8	879-382563B-00
▶ 3/4-1/2	460	2.5-1.6	1075	2	D915*†★	D	PSC	Band	5.6	Rev.	5-1/3	5/8 x 4-1/2	F2417-121479 Marathon EWB48A110558AE
MIAMI/CAREY													
1/35-1/100	115	1.4-5	1550	2	D534	E	SP	Band	3.3	C.W.	2-1/2	1/4 x 1	12324 L
MILLER													
▶ 1/8	115	6.0	1070	1	D1082	F	SP	Lug	5.0	C.W.	4	1/2 x 3-1/4	MILLER 103080002, FASCO 7152-0020, U.E.-DA3F130N
1/6	115	6.6	1050	1	S156	G	SP	Base	5.0	C.W.	3-1/2	1/2 x 3-7/8	MMG Series 80 & 100 MOC Series 80 & 100 CFM Series 80 & 100

+ 7.5M 370V capacitor • Ball bearing motor ‡ Not a direct replacement for 253-1194, but is an acceptable substitute.
 ★ 15M 370V capacitor # 4M 370V capacitor ^ Stainless steel shaft † Replacement for Airease

NOTE: Rotation is determined by looking at shaft end. Shaft length is measured from motor face.



Fig. A D1142



Fig. C D1140, D1141



Fig. E D534



Fig. G S156



Fig. I D1091



Fig. K D1008



Fig. B D1144



Fig. D D915



Fig. F D1082



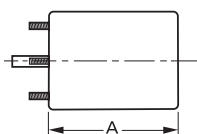
Fig. H K161



Fig. J A081



Fig. L D177



Products on this page are NOT SUITABLE for unattended equipment unless indicated by ▶ symbol. See inside back cover for additional information.

PSC motors use 5M 370V capacitors unless otherwise indicated.