

H.P.	Volts	Amps	RPM	Spd.	Model	Fig.	Type	Mtg.	Dia.	Rot.	"A" Dim	Shaft Dia. and Length	Reference No.
SEARS/WHIRLPOOL													
1/30-1/65	115	1.0-.7	1500	2	D137	A	SP	Stud	3.3	D.S.	2-7/8	2 x 5/16 x 2	Rangehood
1/18-1/30	115	2.4-1.2	1330 1130	2	D1111	J	SP	Lug	3.3	C.C.W.LE	3-1/2	3 - 1/8 x 5/16 x 2-3/8	JA25094, JA25110, JA25121N, A456301, A495601, A495603, 5500 BTU Window A/C; G000519549; G519549
1/15-1/20-1/30	115	1.1-.8 .6	1500	3	D323#	B	PSC	Stud, Band	3.3	D.S.	3-3/4	2-3/4 x 5/16 x 2-3/4	Small Window A/C
▶ 1/10-1/30	115	2.5-2.3	1500	2	D325 ■	C	SP	Lug	3.3	C.C.W.	3-1/2	1-3/4 x 5/16 x 2-3/8	Small Window A/C
1/8-1/10-1/15	115	1.7	1100	3	D857	D	PSC	Tapped	5.6	D.S.	3-1/2	3-1/8 x 1/2 x 4-1/8	Window A/C Using Delco Inside-Outside Motor 485932
1/6-1/8-1/10	230	1.1-1.0 .9	1100	3	D858	D	PSC	Tapped Holes	5.6	D.S.	3-3/4	2-3/4 x 1/2 x 4-1/8	
1/3-1/5-1/8	230	1.7-1.5 1.3	1100	3	D859	D	PSC	Tapped Holes	5.6	D.S.	4-1/4	4-1/4 x 1/2 x 5-1/4	
1/2-1/3-1/4	230	3.2	1075	3	D860+	F	PSC	Base	5.6	D.S.	5-3/4	4-1/4 x 1/2 x 4-3/8	KCP39PG97695
SINGER													
1/4	277	1.3	1625	1	D879 §	G	PSC	Base	5.6	C.W.L.E.	4-1/4	1/2 x 8	Thru the Wall Commercial 5KCP39GG73342
1/10	208-230	1.5	3000	1	D1169	I	SP	Lug	3.3	C.C.W.	5-3/4	5/16 x 1	FASCO 7121-4066 Comfort Maker 1708-507
1/25	115/230	1.3/7	1550	1	D1164	H	SP	Stud	3.3	C.W.	3-1/8	5/16 x 2-1/2	JA2P091N JA2P0901N
▶ 1/40	208-230	.55	3000	1	D1167	E	SP	Lug	3.3	C.C.W.	4-7/8	5/16 x 1	1708-518, 7121-5854

+ 7.5M 370V capacitor § 5M 440V capacitor ■ Rotation is determined by viewing lug end. #3M 370V capacitor
NOTE: Rotation is determined by looking at shaft end. Shaft length is measured from motor face.



Fig. A D137



Fig. C D325



Fig. E D1167



Fig. G D879



Fig. I D1169



Fig. B D323



Fig. D D857, D858, D859



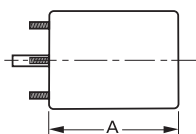
Fig. F D860



Fig. H D1164



Fig. J D1111



Products on this page are NOT SUITABLE for unattended equipment unless indicated by ▶ symbol. See inside back cover for additional information.

PSC motors use 5M 370V capacitors unless otherwise indicated.