

H.P.	Volts	Amps	RPM	Spd.	Model	Fig.	Type	Mtg.	Dia.	Rot.	"A" Dim	Shaft Dia. and Length	Reference No.
<b>TYLER</b>													
1/4	230	1.9	1625	1	D870#	H	PSC	Base	5.6	C.W.	4-3/4	1/2 x 3	5KCP39EGC053T Unit No. 760
<b>UNIFLOW</b>													
-	115	1.32	13	1	V562-13*	F	PSC	-	-	-	-	5/8 x 2-1/4	Flaker Ice Machine Gearmotor, V00682AU62
<b>WHITE CONSOLIDATED INDUSTRIES</b>													
1/18-1/30	115	2.4-1.2	1330 1130	2	D1111	G	SP	Lug	3.3	C.C.W.LE	3-1/2	3-1/8 x 5/16 x 2-3/8	JA25094, JA25110, JA25121N, A456301, A495601, A495603, 5308013815, 5500 BTU Window A/C
<b>WEIL McLAIN</b>													
1/30	115	1.6	3300	1	D1190	E	SP	Lug	3.3	C.W.	4-7/8	5/16 x 1-3/4	7121-5750, JA1N074
<b>WEST BEND/McGRAW EDISON</b>													
1/50-1/65-1/80	115	1.1-.8 .6	1300	3	D1134	A	SP	Stud	3.3	C.W.	2-1/4	1/4 x 1-3/4	Portable Humidifier Motors
<b>WESTINGHOUSE</b>													
1/5	230	2.3	925	1	D262	B	PSC	Band	5.0	Rev.	3-7/8	1/2 x 4	Whisperaire 319P300A
1/5	208-230	1.6	1550	1	D1032#	C	PSC	Base	5.0	D.S.	3-7/8	6-1/4 x 1/2 x 6-1/4	Model No. 319P367A
1/3	208-230	2.3	1625	1	D822	J	PSC	Base	5.6	D.S.	4-1/4	6-3/4 x 1/2 x 8-1/4	5KCP39GGB907T
1/18-1/30	115	1.85 1.5	1330 1130	2	D1111	G	SP	Lug	3.3	C.C.W.LE	3-1/2	3 x 5/16 x 2-1/3	JA25094, JA25110, JA25121N, A456301, A495601, A495603, 5500 BTU Window A/C; G000519549; G519549
1/16-1/25-1/35	115	1.9 1.7 1.4	1550	3	D1113 □	D	SP	Lug	3.3	C.C.W.	3-1/8	2-7/16 x 5/16 x 3-1/4	8264H2290 6000 BTU Window Units
<b>WITT</b>													
1/20	115-230	7.5/4	1550	1	D1102	I	PSC	Stud	3.3	C.W.	3-1/2	5/16 x 2-5/8	7190-2158, 8216073 7190-2159, 8216074

**NEW**

• Ball bearing motor      ■ Rotation is determined by viewing lug end.      # 4M 370V capacitor included

NOTE: Rotation is determined by looking at shaft end. Shaft length is measured from motor face.



Fig. A D1134



Fig. C D1032



Fig. E D1190



Fig. G D1111



Fig. I D1102



Fig. B D262



Fig. D D1113



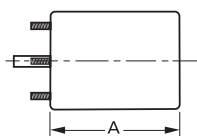
Fig. F V562-13



Fig. H D870



Fig. J D822



Products on this page are NOT SUITABLE for unattended equipment unless indicated by ► symbol. See inside back cover for additional information.

PSC motors use 5M 370V capacitors unless otherwise indicated.