



Fig. A K100



Fig. B K101



Fig. C K102, K114



Fig. D K109, K110



Fig. E K111



Fig. F K112

Fan Blades used with K-Line Motors



K-FAN4032
"D" Shaped hub
.2178" Dia. Bore
4-5/8" Fan Dia.



K-FAN4031
Round bore hub
.1811" Dia. Bore
4-5/8" Fan Dia.



K-FAN6009
"D" Shaped hub
.2178" Dia. Bore
C.W. Rotation
6-5/8" Fan Dia.



K-FAN6010
Round bore hub
.1811" Dia. Bore
C.W. Rotation
4" Fan Dia.



Fig. G K113



Fig. H K115



Fig. I K120



K-FAN6012
Round bore hub
.1811" Dia. Bore
C.W. Rotation
3-1/2" Fan Dia.



K-FAN6013
Round bore hub
.1811" Dia. Bore
CCW Rotation
5-1/2" Fan Dia.



Fig. J K130



Fig. K K161



Fig. L K610



K-FAN6011
Round bore hub
.1811" Dia. Bore
CW Rotation
4" Fan Dia.



K-FAN6046
Round bore hub
.181" Dia. Bore
CCW Rotation
5-1/2" Fan Dia.



Fig. M K611



Fig. N K612



Fig. O K614

K-NUT Push nut
For .1811" Dia. Shaft
K-NUT6002 Push nut
For .2178" Dia. Shaft

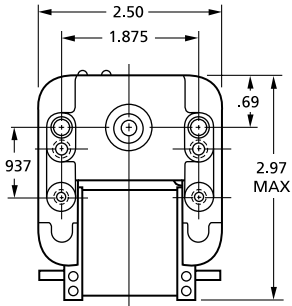


Fig. P K683

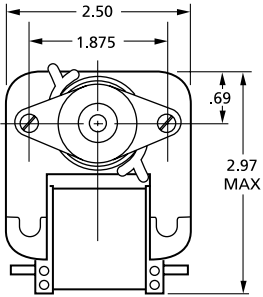


Fig. Q K670, K672, K673

- 115 and 230 VAC models
- Thermally protected
- UL recognized
- CSA certified
- Packed 6 per carton, except K670, K672, and K673 packed 1 per carton.



MODELS K101, K102, K114, K611, K612



ALL OTHER MODELS

C-FRAME • K-LINE • SHADED POLE TWO MAIN THRU-BOLTS WITH TORX HEADS								
Stack In./mm	Volts	Amps	Rotation	Model	Fig.	Shaft Dia. In./mm	Shaft Length	RPM
▶ .625/15.8	115	.71	C.W.	K100(1)	A	.181/4.5	1.11	2750
▶ 1.25/31.7	230	.58	C.C.W.	K101	B	.217/5.5	1.34	1260
▶ .562/14.2	115	.64	C.W.	K102(1)	C	.181/4.5	1.50	1100
▶ .75/19.0	115	.90	C.C.W.	K109	D	.217/5.5	2.37	3000
▶ .75/19.0	115	.90	C.C.W.	K110†	D	.217/5.5	2.37	3000
▶ .562/14.2	115	1.1	C.C.W.	K111	E	.217/5.5	1.94	3000
▶ 1.00/25.4	115	1.0-.5	C.W.	K112*	F	.217/5.5	1.46	3000
▶ .75/19.0	115	1.2	C.C.W.	K113	G	.217/5.5	1.15	3000
▶ .5/12.7	115	.64	C.W.	K114	C	.181/4.5	1.75	1100
▶ .75/19.0	120	.64	C.C.W.	K115	H	.217/4.5	1.75	3000
▶ .562/14.2	115	.40-.25	C.W.	K120*	I	.217/5.5	1.55	3000
▶ .625/15.8	115	.43	C.W.	K130(1)	J	.181/4.5	1.00	3000
▶ 1.00/25.4	115	1.05	C.C.W.	K161	K	.217/5.5	1.21	3000
▶ 1.00/25.4	115	.88-.68	C.C.W.	K610*	L	.217/5.5	1.30	3000
▶ .75/19.0	115	.67	C.C.W.	K611	M	.250/6.3	2.45	3000
▶ 1.00/25.4	115	.80	C.W.	K612	N	.250/6.3	2.70	3000
▶ .562/14.2	115	.60	C.W.	K614	O	.217/5.5	1.625	3000
▶ .625/15.8	115	.50	C.C.W.	K670	Q	.1875/4.8	1.75	3000
▶ .625/15.8	240	.25	C.C.W.	K672	Q	.1875/4.8	1.75	3000
▶ .625/15.8	115	.50-.35	C.C.W.	K673*	Q	.1875/4.8	1.75	3000
▶ .875/22.2	240	.25	C.W.	K683	P	.1875/4.8	1.75	3000

(1) Use Fan Blades with round hub I.D. See page 9.

* Two speed motor

† K110 has maximum flat length.

MODEL	APPLICATIONS	REPLACES
K100	VENT FAN	FASCO 0648-0027, 642, 643, 645, 646, 647, A647, B647, 648S, 664, A664, 667, A667, B667 and many others
K101	WALL HEATER	FASCO 8767-8036 OR 7102-0001
K102	WALL HEATER	FASCO 1235-0007 OR 7102-0003
K109	VENT FAN	NUTONE C-68626, C-68627, WESTWARD VFM 106
K110	VENT FAN	BROAN 99-08-0165, 670A
K111	VENT FAN	NUTONE 65878, WESTWARD VFM 100
K112	RANGEHOOD	NUTONE 52367, WESTWARD VFM 101
K113	VENT FAN	NUTONE 63675, 9605-N, 9665-N WESTWARD VFM 103
K114	REFRIGERATION FAN	HUSSMAN 301-5734
K115	HEATER	NUTONE 66582, 9605-N, 9665-N, 9093-N WESTWARD VFM 104
K120	DUCTLESS RANGEHOOD	ARROWHOOD 602, 605, 607, UPPCO 37F2M
K130	VENT FAN	STANDARD REPLACEMENTS 5/8" STACK
K161	ICEMAKER	AEROVOX S11000017, MATHIESEN
K610	RANGEHOOD	ROTOM R610 ELECTROHOME 2858-207-002, BROAN 30080011
K611	VENT FAN	BROAN 162
K612	VENT FAN	UPPCO 99080145, BROAN 162
K614	VENT FAN	General Replacement
K670	VENT FAN	GEM EM 670, ACME AM-4670, SUPCO SM-670, MARS 90971
K672	VENT FAN	GEM EM 672, Acme 602/702 WESTWARD 14005
K673	VENT FAN	EM673
K683	VENT FAN	GEM EM683, WESTWARD 14025

NOTE: Rotation is determined by looking at shaft end. Shaft length is measured from motor face.

Products on this page are NOT SUITABLE for unattended equipment unless indicated by ▶ symbol. See inside back cover for additional information.