

H.P.	Volts	Amps	RPM	Spd.	Model	Fig.	Type	Mtg.	Dia.	Rot.	"A" Dim.	Shaft Dia. and Length	Reference No.
AIR AMERICA CORP.													
▶ 1/8	115	3.3	1050	1	D1028	G	SP	Band	5.1	C.W.	3-1/2	1/2 x 2-1/2	A0510B2008
AMANA													
1/20-1/30-1/40	265	.4 .3 .2	1100	3	D1062#	D	PSC	Lug	5.1	C.W.	3-3/4	1/2 x 3-1/2	Amana C-6397902 Emerson K48HXCNB-1458 5KCP29FK52585
1/20-1/30-1/40	208-230	.4 .3 .2	1100	3	D1056# †	A	PSC	Lug	5.0	C.W.	3-5/8	1/2 x 3	Amana 900 Unit C-61147-5 5KCP29FK8865
1/20-1/30-1/40	265	.5-.3 .2	1100	3	D1058	E	PSC	Lug	5.0	C.W.	3-5/8	1/2 x 2-1/2	5KCP29FK8855 Amana C-61147-6
1/2-1/3	208-230	4-2.8	1075	2	D831■	F	PSC	Band	5.6	D.S.	6-3/4	7-1/8 x 1/2 x 7-1/8	Amana, Rheem/Ruud Luxaire, American Standard
—	115	1.95	3250	1	A129	H	SP	—	3.3	C.W.	—	—	AMANA, 7021-9064, 7021-9259
—	115	.7	3450	1	A158	I	PSC	—	3.3	C.W.	—	—	AMANA, 7062-3151
—	115	1.6	3000	1	A160	J	SP	—	—	C.W.	—	—	AMANA, 7002-2407
AMERICAN AIR FILTER													
▶ 1/6	277	.9	1600	1	D1065#	B	PSC	Band	5.0	C.C.W.	3-1/3	1/2 x 2-1/2	ZCAABWY15141 IWQ5827 5KCP29DK3697T
▶ 1/8	115	2.5	700	1	D827▲ •	C	PSC	Base	5.6	C.C.W.	5-1/2	1/2 x 2	7-150444-02

• Ball bearing motor # 4M 370V capacitor

† Rotation is determined by viewing lug end.

▲ 6M 370V capacitor

■ 7.5M 370V capacitor not included

NOTE: Rotation is determined by looking at shaft end. Shaft length is measured from motor face.



Fig. A D1056



Fig. C D827



Fig. E D1058



Fig. G D1028



Fig. I A158



Fig. B D1065



Fig. D D1062



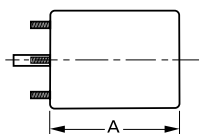
Fig. F D831



Fig. H A129



Fig. J A160



Products on this page are NOT SUITABLE for unattended equipment unless indicated by ▶ symbol. See inside back cover for additional information.

PSC motors use 5M 370V capacitors unless otherwise indicated.

H.P.	Volts	Amps	RPM	Spd.	Model	Fig.	Type	Mtg.	Dia.	Rot.	"A" Dim	Shaft Dia. and Length.	Reference No.
ARKLA													
1/3	115	6.1	825	1	D795	G	PSC	Base Band	5.6	Rev.	5-3/4	1/2 x 6-1/2	Gas Heat Pump K55HX5FN8042
ARMSTRONG													
—	115	1.4	3000	1	A155	L	SP	—	3.3	C.C.W.	—	—	7021-10046
BOHN													
1/20	115	2.1	1550	1	D1124✓	H	SP	Band	3.3	C.W.	3	5/16 x 3	5KSM59JSK143S & 5KSM59JS5036S
1/15	230	1.1	1550	1	D1126✓	H	SP	Band	3.3	C.W.	3-1/2	5/16 x 3	5KSM59LS2262AS
1/15	208-230	.4	1550	1	D1125+	K	PSC	Stud	3.3	C.C.W.	3-3/4	5/16 x 2-5/8	7190-0442
BROAN													
▶ 1" (stack)	115	.9-.7	3000	2	K610	A	SP	Stud	—	C.C.W.	—	.2178 x 1.3"	Motor 30080011 Model Y2-52000
▶ 1" (stack)	115	.8	3000	1	K612	B	SP	Stud	—	C.W.	—	.250 x 2.7	Model 162 (Before 1980)
▶ 3/4" (stack)	115	.7	3000	1	K611	C	SP	Stud	—	C.C.W.	—	.250 x 2.45	Model 162 (After 1980)
1/12	115	2.9	1050	1	D1087	I	SP	Lug	5.1	C.W.	2-5/8	1/2 x 2-1/3	99-08-0178, 7151-3160
1/75	115	.9	3000	1	K110	J	SP	Stud	—	C.C.W.	—	7/32 x 2-13/32	99-08-0165, 670A
BRYANT/CARRIER													
1/3-1/4	230	2.6-2.2	1075	2	D803	D	PSC	Lug	5.6	Rev.	4-1/2	1/2 x 3-1/2	K55HXLKK-5918 HC41VB701
1/30	115	1.5	3000	1	D1179	E	SP	Lug	3.3	C.W.	3-1/2	5/16 x 2	BDP P251-2916 Franklin 8251510360
1/20	115	1.5	3300	1	D1180	E	SP	Lug	3.3	C.W.	3-5/8	5/16 x 2-1/8	Carrier HC27UE120, BDP 398A, BDP P251-2307 U.E. JAIP053N, UE Stock 580
BRYANT/PAYNE													
1/8	208-230	.9	1125	1	D847	F	PSC	Band	5.6	C.C.W.	3-3/4	1/2 x 3-1/2	K1543 HC35VE-230 KA55CGD-9658

✓ Special low-temperature oil

+ Includes 4M 370V capacitor

NOTE: Rotation is determined by looking at shaft end. Shaft length is measured from motor face.



Fig. A K610



Fig. D D803



Fig. G D795



Fig. J K110



Fig. B K612



Fig. E D1179, D1180



Fig. H D1124, D1126



Fig. K D1125



Fig. C K611



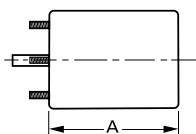
Fig. F D847



Fig. I D1087



Fig. L A155



Products on this page are NOT SUITABLE for unattended equipment unless indicated by ▶ symbol. See inside back cover for additional information.

PSC motors use 5M 370V capacitors unless otherwise indicated.

H.P.	Volts	Amps	RPM	Spd.	Model	Fig.	Type	Mtg.	Dia.	Rot.	"A" Dim	Shaft Dia. and Length	Reference No.
BUCK STOVE													
1/50-1/80-1/140	115	.88 .60-.45	1550	3	D1138	H	SP	Band	3.9	C.W.	4	5/16 x 2-1/2	R22CCW270ZD 7163-6045
1/50-1/80-1/125	115	.88 .61-.46	1550	3	D1139	I	SP	Stud	3.3	C.W.	2-13/16	2-1/2 x 5/16 x 1-1/8	R22CW206MD
BUTLER VENTILATOR													
▶ 1/10	115	3.6	1050	1	D1066	A	SP	Band	5.0	C.W.	3-7/8	1/2 x 2-3/4	846PY4V, 2414
CAMCO													
1/90	240	.3	1550	1	D1119	B	SP	Band	3.3	C.C.W.	2-1/4	1/4 x 1-1/2	Universal JB1PO4410V Electrohome 2868-405-173 Rotom R302
CARRIER													
1/30	115/230	1.3-.7	3000	1	D455*†	D	SP	Stud	3.3	C.C.W.	5-7/8	1/4 x 3-7/8	Draft Booster/ Flue Exhaust Switch Motors
1/15	115/230	2.0-1.0	3000	1	D456*†	C	SP	Stud	3.3	C.W.	6-1/2	1/4 x 2-3/4	
1/15	115/230	2.0-1.0	3000	1	D457*†	C	SP	Stud	3.3	C.C.W.	6-1/2	1/4 x 2-3/4	
1/15	208/230	1.0	3000	1	D458*†	C	SP	Stud	3.3	C.W.	6-1/2	1/4 x 2-3/4	
1/15	460	.6	3000	1	D1174†	C	SP	Stud	3.3	C.W.	6-3/4	1/4 x 2-1/2	Carrier HC34AU725A Universal JB1PO44NV HC24AU725
1/15	208-230	.45	3450	1	D1178	G	PSC	Stud	3.3	C.W.	6-3/4	1/4 x 2-3/4	Carrier HC680001, Fasco 7162-3829
1/6-1/8-1/10	208-230	1.3-1.2 1.1	1040	3	D864■	F	PSC	Lug	5.6	C.W.	3-3/4	2-1/8 x 1/2 x 7-1/4	124279, 128560 124276, 7126-0103 7126-0043
1/5	230	1.3	1075	1	D842#	E	PSC	Lug	5.6	C.W.	3-3/4	1/2 x 3-1/4	HC37VE230 Cond. round unit
1/5-1/6-1/8	265-277	1.1-.8 .7	1040	3	D848■	F	PSC	Lug	5.6	C.W.	3-1/2	3 x 1/2 x 7	51PH124275 HC37MB-730

• Ball bearing motor # 4M 370V capacitor † 3M 370V capacitor † Does not have shaft bushing.

* Includes shaft bushing ■ Rotation is determined by viewing lug end

NOTE: Rotation is determined by looking at shaft end. Shaft length is measured from motor face.



Fig. A D1066



Fig. C D456, D457, D458, D1174



Fig. E D842



Fig. G D1178



Fig. I D1139



Fig. B D1119



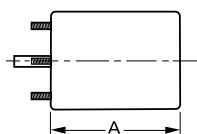
Fig. D D455



Fig. F D848, D864



Fig. H D1138



Products on this page are NOT SUITABLE for unattended equipment unless indicated by ▶ symbol. See inside back cover for additional information.

PSC motors use 5M 370V capacitors unless otherwise indicated.

H.P.	Volts	Amps	RPM	Spd.	Model	Fig.	Type	Mtg.	Dia.	Rot.	"A" Dim	Shaft Dia. and Length.	Reference No.
CARRIER													
1/30	208-230	.65	3000	1	D463•	I	SP	Stud	3.3	C.W.	3-7/8	5/16 x 2-1/2	HC24HE230
1/16	208-230	.57	3450	1	D1182	J	PSC	Stud	3.3	C.C.W.	4-1/2	5/16 x 3-1/3	7162-3367 HC30GB230B K33HXCCP-915 HC30GB230
1/15	230/460	1.2/0.6	3000	1	D459•	H	SP	Stud	3.3	C.W.	7	1/4 x 3	HC24AU725A, JB1P044 AB15078, JB1R039, AB15029
1/4	230	1.5	1625	1	D844#	D	PSC	Lug	5.6	C.W.	3-1/2	1/2 x 3	HC37ME268 5KCP39BG75245
1/4-1/5	208-230	2.2-2.0	1075	2	D843§	B	PSC	Lug	5.6	Rev.	4	1/2 x 4-1/4	F48SG6MA10, F48SG6MA16 F48SG6MA28, F48SG6MA37 F48S16MA28, HC37MZ220, HC39VE608 HC39ML706, HC39ME720
1/2	460	.9	1050	1	D802*•	G	PSC	Stud, Band	5.6	Rev.	5-1/2	1/2 x 3-1/3	Carrier HC44VL463A, AO Smith FEH1056S GE 5KCP39PGH600CS
1/2	208-230	5.3	1075	1	D804*+	A	PSC	Base, Band	5.6	C.W.	6-1/2	1/2 x 6	5KCP39PGC138S
1/2	230/460	3.9/2.0	1075	1	S2846*★	E	PSC	Band, Base	5.6	Rev.	6-1/2	1/2 x 5-3/8	Canopy Type Outdoor Condenser Fan Motor
3/4-1/2-1/3-1/4	115	11.2-9.1 7.5-6.4	1075	4	D838	C	PSC	Band	5.6	Rev.	5-1/4	1/2 x 6-1/2	HC45SE116, SC435X101, HC43SE116
3/4	230/460	4.7/2.4	1075	1	S2848*‡	F	PSC	Band, Base	5.6	Rev.	7-3/4	1/2 x 6	Canopy Type Outdoor Condenser Fan Motor

• Ball bearing motor # 4M 370V capacitor * 10M 370V capacitor § 5M 440V capacitor
 + 7.5M 370V capacitor ‡ 20M 370V capacitor ★ 7.5M 440V capacitor

NOTE: Rotation is determined by looking at shaft end. Shaft length is measured from motor face.



Fig. A D804



Fig. C D838



Fig. E S2846



Fig. G D802



Fig. I D463



Fig. B D843



Fig. D D844



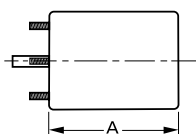
Fig. F S2848



Fig. H D459



Fig. J D1182



Products on this page are NOT SUITABLE for unattended equipment unless indicated by ► symbol. See inside back cover for additional information.

PSC motors use 5M 370V capacitors unless otherwise indicated.

CARRIER/BLOWER WHEELS						
Model	Diameter	Width	Rot.	Fig.	Bore	Replaces
1-6051	3-27/32	1-13/64	C.C.W.	A	1/4	Flue Exhaust & Draft Booster LA21RB327
1-6052	4-1/4	2-15/16				LA21RA425
1-6113	3-27/32	1	C.W.	A	1/4	Flue Exhaust & Draft Booster LA21ZA038
1-6114	3-27/32	1-1/4	C.W.	A	1/4	Flue Exhaust & Draft Booster
1-6133	4	2-1/2	C.C.W.	B	1/4	Gas Furnace Draft Inducer
1-6141	4	1-1/2	C.C.W.	A	5/16	P441-1146, LA11AA004
1-6143	5-3/4	1-1/2	C.C.W.	A	5/16	LA11AD056, LA11ZD058

NOTE: Blower wheel rotation is determined by viewing back plate.

H.P.	Volts	Amps	RPM	Spd.	Model	Fig.	Type	Mtg.	Dia.	Rot.	"A" Dim	Shaft Dia. and Length.	Reference No.
CARRIER/WHIRLPOOL													
1/15-1/25	115	.9-.8	1550	2	D1176#	E	PSC	Stud	3.3	D.S.	4	4-7/8 x 3/8 x 4-7/8	130096, 202466
CHAMPION COOLER													
1/10-1/15	115	3.5-2.2	1040	2	D1069	F	SP	Stud	5	D.S.	2-5/8	3 x 3/8 x 3 w/ bushings	7151-2925 7151-0109 MP2500
CHROMALOX													
1/30	240	.6	1550	1	D1118•	C	S.P.	Lug	3.3	C.W.	2-13/16	5/16 x 3-1/2	2868-811-005B, 2868-505-016, 2686-511-027A
CHRYSLER AIRTEMP													
1/5-1/6-1/8	208-230	1.6-1.1 1.0	1100	3	D1022■	D	PSC	Lug	5.0	C.W.	3-7/8	2-3/8 x 1/2 x 2-3/4	3704387, 2874493 2874495

4M 370V capacitor ■ Rotation is determined by viewing lug end. • Ball bearing motor

NOTE: Rotation is determined by looking at shaft end. Shaft length is measured from motor face.



Fig. A 1-6051, 1-6052, 1-6113, 1-6114, 1-6141, 1-6143



Fig. C D1118



Fig. E D1176



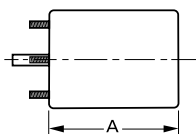
Fig. B 1-6133



Fig. D D1022



Fig. F D1069



Products on this page are NOT SUITABLE for unattended equipment unless indicated by ► symbol. See inside back cover for additional information.

PSC motors use 5M 370V capacitors unless otherwise indicated.