

Replacement Models

H.P.	Volts	Amps	RPM	Spd.	Model	Fig.	Type	Mtg.	Dia.	Rot.	"A" Dim	Shaft Dia. and Length.	Reference No.
COLEMAN													
88CFM	115	1.3	3200	1	A088	A	S.P.	-	3.3.	C.W.	-	-	7021-5478
1/8-1/11	115	4.5-3.4	1050	2	D178	B	SP	Base	5.0	C.W.	3-1/4	1/2 x 4	Blower Motor
1/150	115	.48	3000	1	D408	C	SP	Threaded Holes	3.3	C.W.	5-1/2	1/4 x 1-1/2	7995-316, 7121-5906
CONSOLIDATED INDUSTRIES													
-	115	.9	3000	1	A128	I	SP	-	3.3	C.W.	-	-	7021-6376, 7021-9404
COPELAND													
1/4	208-230	1.5	1625	1	D783	D	PSC	Base	5.6	Rev.	4	1/2 x 6	3047 050-0238-00
DUOTHERM													
1/6	115	7.9	1050	1	D1080	E	SP	Lug	5.1	C.W.	4-1/2	1/2 x 4	3-14826 100,000 BTU Furnaces
1/6-1/8-1/10	115	2.4-1.9 1.5	1625	3	D1081*	F	PSC	Lug	5.1	Rev.	4-7/8	3-1/2 x 1/2 x 3-5/8	3-9650, 12,0000-13,000BTU's 5KCP29MG4011S 8743810260, 3-18440
1/15	115	3.2	1000	1	D1001	H	SP	Lug	5.1	C.W.	2-1/3	3/8 x 3-3/4	3-9930
ECONOMITE/MID-CONTINENT GAS BURNER													
1/40	115	1.2	1500	1	D1151	G	SP	Stud	3.3	C.C.W.	2-3/4	5/16 x 3-1/4	AA2P026N

* 10M 370V capacitor

NOTE: Rotation is determined by looking at shaft end. Shaft length is measured from motor face.



Fig. A A088



Fig. C D408



Fig. E D1080



Fig. G D1151



Fig. I A128



Fig. B D178



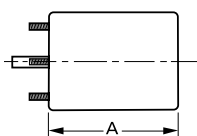
Fig. D D783



Fig. F D1081



Fig. H D1001



Products on this page are NOT SUITABLE for unattended equipment unless indicated by ► symbol. See inside back cover for additional information.

PSC motors use 5M 370V capacitors unless otherwise indicated.

H.P.	Volts	Amps	RPM	Spd.	Model	Fig.	Type	Mtg.	Dia.	Rot.	"A" Dim	Shaft Dia. and Length.	Reference No.
EMERSON													
1/5-1/6-1/8	208-230	1.6-1.5 1.3	1400	3	D1033	B	PSC	Base	5	D.S.	3-3/4	2-3/4 x 1/2 x 3-1/2	Quiet Kool
EVANS/ARMSTRONG/LSI/HOME													
▶ 1 - 3/4	230	6.2-5.6	1625	2	D825*	C	PSC	Base	5.6	Rev.	6-3/4	1/2 x 3	5KCP35SG644S
EVCON													
1/85	115	0.67	2950	1	K629	L	SP	Threaded Holes	-	C.W.	4-5/8	1/4 x 1.1	7102-2187
—	115	1.4	3000	1	A156	M	SP	—	3.3	C.W.	—	—	EVCON, 7021-8935
FASCO													
▶ .58 (stack)	115	.6	1110	1	K102	F	SP	Stud	-	C.W.	-	.1811 x 1.5	Model2435
▶ .625 (stack)	115	.7	2750	1	K100	E	SP	Stud	-	C.W.	-	.1811 x 1.11	0648-0027 Ventilator
▶ 1.25 (stack)	230	.6	1260	1	K101	G	SP	Stud	-	C.C.W.	-	.2178 x 1.75	Model 2540 7102-0001 Motor
▶ 1/130	115	.45	1500	1	D1159	A	SP	Stud	3.3	C.C.W.	2-1/8	5/16 x 1-1/8	7163-1845, VENT 656, VENT 293A, VENT PV7896
▶ 1/110	115	.58	1480	1	D1160	K	SP	Stud	3.3	C.W.	2-1/8	5/16 x 1-1/2	7163-2593, 663, 668, 763, 768, 661
▶ 1/100	115	.6	1500	1	D1162	D	SP	Band	3.3	Rev.	3-1/2	5/16 x 1	7163-1541, Model 659 Vent
▶ 1/15-1/25	115	2.9-1.9	1600	2	D1161	H	SP	Lug	3.3	C.C.W.	4-1/4	5/16 x 2	Several Blower Applications
▶ 1/4-1/12	115	3.2-2.4	1100	2	D824# •	J	PSC	Pedstal	5.6	C.W.	5-3/4	1/2 x 3-1/2	Pedestal Fan 7126-0922, 7126-2594, 7126-0485, 7126-0936
▶ 1/3-1/4	120	4.8-4.5	1050	2	D820	I	PSC	Base	5.6	Rev.	4-1/4	1/2 x 2	Whole house fans 7126-1194, 7126-0545 7126-0158, 7126-0460 7126-1195

4M 370V capacitor

* 10M 370V capacitor

• Ball bearing motor

NOTE: Rotation is determined by looking at shaft end. Shaft length is measured from motor face.



Fig. A D1159



Fig. D D1162



Fig. G K101



Fig. J D824



Fig. M A156



Fig. B D1033



Fig. E K100



Fig. H D1161



Fig. K D1160



Fig. C D825



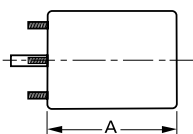
Fig. F K102



Fig. I D820



Fig. L K629



Products on this page are NOT SUITABLE for unattended equipment unless indicated by ▶ symbol. See inside back cover for additional information.

PSC motors use 5M 370V capacitors unless otherwise indicated.

H.P.	Volts	Amps	RPM	Spd.	Model	Fig.	Type	Mtg.	Dia.	Rot.	"A" Dim	Shaft Dia. and Length.	Reference No.
FEDDERS (continued on next page)													
1/80	115	.6	1500	1	D441	A	SP	Stud	3.3	C.C.W.	2-1/8	1/4 x 1 Threaded w/Driver	Fedders, Oasis Whirlpool Port. Dehumidifiers
1/20	460	.4	1550	1	D186	I	SP	Stud	3.3	C.W.	2-7/8	5/16 X 2-1/3	Roof Top AC
1/15-1/20-1/25	115	2.3 1.9 1.6	1550	3	D1012	B	SP	Stud	4.4	D.S.	3-3/8	3 x 3/8 x 3	RMR, RY1302, S206-00025-001 Y24CW50, 7190-0163
1/12-1/17-1/25	115	1.1 .9 .8	1450	3	D1135*	G	PSC	Stud	3.3	D.S.	4	2-1/2 x 3/8 x 1-7/8	7190-0163, 7190-0777, S213-0004-001, S206-00025-001, S206-0025-002
1/10-1/20	230	1.5-1.0	1050	2	D1015	C	SP	Base	5.0	D.S.	3-1/4	2-5/8 x 1/2 x 2-5/8	Window AC Motors, S196-10-6 and S196-101-6
1/8-1/12-1/15	115	4.4-3.0 2.3	1050	3	D1010	D	SP	Stud, Base	5.0	D.S.	3-3/8	3-1/3 x 1/2 x 2-3/4	Window AC Motor S196-20-2
1/6-1/12-1/15	208-230	2.5-1.6 1.2	1050	3	D1011	D	SP	Stud, Base	5.0	D.S.	3-1/4	3-1/3 x 1/2 x 2-3/4	Window AC Motors S196-42-1 and S296-161-3
1/6-1/8-1/10	115	2.3-2.0 1.8	1050	3	D884	H	PSC	Stud	5.6	D.S.	3-3/4	5 x 1/2 x 4	S196-59-1, 2:72-1,2:73-1,2:74-1,2,3
1/5	230	1.5	1080	1	D882+	E	PSC	Stud	5.6	C.W.	3-1/2	1/2 x 4-1/4	Condenser Fan S196-179-1
1/4	230	2.0	1100	1	D1016	F	PSC	Base	5.0	C.W.	3-7/8	1/2 x 4-1/8	Condenser Fan S196-18-2
1/4, 1/6, 1/8	208-230	2.2-1.3 1.1	1175	3	D881	H	PSC	Stud	5.6	D.S.	4-1/4	3-1/2 x 1/2 x 2	Window AC S196-134-1

* 10M 370V capacitor + 7.5M 370V cap installed

NOTE: Rotation is determined by looking at shaft end. Shaft length is measured from motor face.



Fig. A D441



Fig. C D1015



Fig. E D882



Fig. G D1135



Fig. I D186



Fig. B D1012



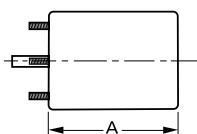
Fig. D D1010, D1011



Fig. F D1016



Fig. H D881, D884



Products on this page are NOT SUITABLE for unattended equipment unless indicated by ► symbol. See inside back cover for additional information.

PSC motors use 5M 370V capacitors unless otherwise indicated.

H.P.	Volts	Amps	RPM	Spd.	Model	Fig.	Type	Mtg.	Dia.	Rot.	"A" Dim	Shaft Dia. and Length	Reference No.
FEDDERS (continued)													
1/3	208-230	2.1-1.9 1.5	1240	3	D888	D	PSC	Stud Base	5.6	D.S.	5-1/4	3-3/4 x 1/2 x 3-1/4	S206-00014-004 FASCO 7124-0589
159 CFM	230	.5	1550	1	A159*	C	SP	-	3.3	C.C.W.	-	-	AK4K84BX 11-7096
161 CFM	230	.6	1600	1	A161*	C	SP	-	3.3	C.C.W.	-	-	Brinkley 8353920103 Fedders
FRIEDRICH													
1/6-1/8-1/12-1/15-1/20	230	8-7-5 4-3	1075	5	D867# ■	A	PSC	Lug	5.6	C.C.W.	4	3-3/8 x 1/2 x 2-1/2	323P225
1/3-1/4-1/5-1/6-1/7	230	2.1-1.5 1.2-1.0-0.9	1075	5	D868 ■	A	PSC	Lug	5.6	C.C.W.	4-3/4	2-3/4 x 1/2 x 2-1/4	5KCP39MG9096S 5KCP39KGE992S 5KCP39LGD804S 5KCP39LGG720S 5KCP39LGK010T 5KCP39MG7145S 5KCP39MG9679S 5KCP39LGM011T
FRIGIDAIRE													
1/3-1/4-1/5	230	3.2-3.0 2.5	1400	3	D891	B	PSC	Base	5.6	D.S.	4-3/4	4 x 1/2 x 3-3/4	1130033, 5KCP39HGA857
GAFFERS AND SATTLER													
1/2-1/3	208-230	3.2-3.0	1075	2	D862+	E	PSC	Base	5.6	D.S.	5-1/4	2-5/8 x 1/2 x 2-1/2	Roof Top A/C Direct Pak 1.5 and 2.0 EA

• Ball bearing motor # 4M 370V capacitor + 7.5M 370V capacitor

■ Rotation is determined by viewing lug end.

NOTE: Rotation is determined by looking at shaft end. Shaft length is measured from motor face.



Fig. A D867, D868



Fig. C A159, A161



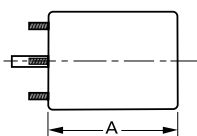
Fig. E D862



Fig. B D891



Fig. D D888



Products on this page are NOT SUITABLE for unattended equipment unless indicated by ► symbol. See inside back cover for additional information.

PSC motors use 5M 370V capacitors unless otherwise indicated.

Replacement Models

H.P.	Volts	Amps	RPM	Spd.	Model	Fig.	Type	Mtg.	Dia.	Rot.	"A" Dim	Shaft Dia. and Length	Reference No.
GENERAL ELECTRIC													
1/5-1/8	208-230	1.1-.7	1625	2	D896#	A	PSC	Stud	5.6	C.C.W. L.E.	3-3/4	2-7/8 x 1/2 x 2-1/4	KCP39DGD779S, WJ94X0518
1/5-1/6-1/8-1/10	230	1.5-1.1 1.0-.8	1075	4	D897# ■	B	PSC	Lug	5.6	C.W.	3-3/4	2-3/8 x 1/2 x 2-1/2	KCP39EG5480S 5KCP39DGK014T 5KCP39EG5480S WP94X1, WJ94X162
1/5-1/8-1/10	265	1.3-.9 .7	1075	3	D898 # ■	B	PSC	Lug	5.6	C.W.	3-3/4	2-3/8 x 1/2 x 2-1/2	KCP39EG5967S 5KCP39DGK013T WP94X2, WP94X213, WP94X214, WP94X299, WP94X505
1/6-1/10	265	.9-.5	1075	2	D893#	D	PSC	Lug	5.6	C.C.W.	3-1/2	1/2 x 2-1/8	WP94X0004 (Stock) 5KCP39CGF467S
1/6	277	.8	1650	1	D894	D	PSC	Lug	5.6	C.W.	3-3/4	1/2 x 2-1/4	5KCP39CGP727S
1/8	230	1.1	1550	1	D1050‡	C	PSC	Band	5.0	C.W. O.L.E.	3-1/4	1/2 x 3	A/C Condenser KSP29DK1728S
1/8	230	1.1	1550	1	D264	C	PSC	Band	5.0	R.E.V.	3-1/4	1/2 x 5	A/C Cond. Fan Motor
1/12-1/25	277	.6-.2	1625	2	D1086	E	PSC	Base	5.0	C.C.W.	3-1/4	6-1/2 x 1/2 x 6-1/2	5KCP29CK3586AS
GIBSON-BELDING & KELVINATOR													
1/5-1/8-1/10	230	1.7 1.4-1.1	1050	3	D852 ■	F	PSC	Lug	5.6	D.S.	3-3/4	5 x 1/2 x 4-1/2	G519203, Window A/C Franklin No., 80431
1/3-1/4-1/5	230	2.0 1.9-1.8	1090	3	D1853 ■	G	PSC	Lug	5.6	D.S.	4-1/4	6 x 1/2 x 2-7/8	G519243, G505976 K55HXNEC-6830
1/3-1/4-1/6	208-230	2.8-1.7 1.2	1365	3	D854° ■	H	PSC	Lug	5.6	D.S.	4-1/2	4-1/2 x 1/2 x 2-5/8	Franklin X157668 X152275, 82181
1/3-1/4-1/5	230	2.7-2.0 1.7	1365	3	D855	I	PSC	Band, Stud	5.6	D.S.	4-1/4	8 x 1/2 x 8-3/4	RAK7024
1/3-1/4-1/5	230	3.1	1300	3	D856 ■	J	PSC	Lug Base	5.6	D.S.	5	5-1/4 x 1/2 x 3	G519244, G505971 K55HXNEM6844
1/15-1/20-1/25	115	1.5-1.0 .9	1550	3	D1112° ■	K	PSC	Lug	3.3	D.S.	4	2-5/8 x 5/16 x 2-7/8	506601 507007 506720 80126

4M 370V capacitor + 7.5M 370V capacitor ■ Rotation is determined by viewing lug end.
 ‡ Original motor is Shaded Pole, D1050 is PSC to provide greater motor efficiency and permit closing shaft end of motor to prevent moisture from entering motor ° 3M 370 capacitor
NOTE: Rotation is determined by looking at shaft end. Shaft length is measured from motor face.



Fig. A D896



Fig. D D893, D894



Fig. F D852



Fig. H D854



Fig. J D856



Fig. B D897, D898



Fig. E D1086



Fig. G D1853



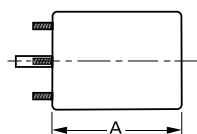
Fig. I D855



Fig. K D1112



Fig. C D264, D1050



Products on this page are NOT SUITABLE for unattended equipment unless indicated by ► symbol. See inside back cover for additional information.

PSC motors use 5M 370V capacitors unless otherwise indicated.