

H.P.	Volts	Amps	RPM	Spd.	Model	Fig.	Type	Mtg.	Dia.	Rot.	"A" Dim	Shaft Dia. and Length	Reference No.
GOODMAN													
—	115	1.4	3400	1	A140	I	SP	—	3.3	C.W.	—	—	7021-9087, 7021-9000
—	115	7.3	3000	1	A157	J	SP	—	—	C.C.W.	—	—	7002-2307
—	208-230	.5	3000	1	A162	K	SP	—	3.3	C.C.W.	—	—	7021-8656
—	115	1.1	3000	1	A079	L	SP	—	3.3	C.C.W.	—	—	7021-6804
GREENHECK FAN													
▶ 1/20-1/30-1/60	115	2.0-1.7 1.4	1550	3	D1061	D	SP	Stud, Base	4.4	C.C.W.	4-1/8	1/2 x 2-3/4	7108-2425
HEAT N GLOW													
—	115	1.2	3000	1	A133	M	SP	—	—	—	—	—	7002-1241
HEIL-QUAKER													
64CFM	115	.7	3150	1	A064	E	SP	—	3.3	C.W.	—	—	610672, 7021-5043
1/6	208-230	1.0	1100	1	D2810	B	PSC	Band	5.6	C.C.W.	4	1/2 x 2	HQ 1050892EM, KA55HXHNK-2379
1/6	208-230	.99	1100	1	D1071	C	PSC	Band	5.1	Rev.	3-7/8	1/2 x 2-1/8	HQ 1052662EM 48HXCLW-1562
—	208-230	.5	3000	1	A148	G	SP	—	3.3	C.C.W.	—	—	HEIL QUAKER, 7021-9237
—	230	.3	2800	1	A151	H	SP	—	3.3	C.W.	—	—	INTER CITY, HQ1050144
HERMAN NELSON													
1/4	115	3.8	825	1	D829	F	PSC	Base	5.6	Rev.	5-5/8	1/2 x 2	—
1/4	115	4.3	1050	1	D880•	A	PSC	Base	5.6	C.C.W.	5-1/2	1/2 x 1-1/2	—
▶ 1/8	115	2.5	700	1	D827•	A	PSC	Base	5.6	C.C.W.	5-1/2	1/2 x 2	7-150444-02

• Ball bearing motor

NOTE: Rotation is determined by looking at shaft end. Shaft length is measured from motor face.



Fig. A D827, D880



Fig. D D1061



Fig. G A148



Fig. J A157



Fig. M A133



Fig. B D2810



Fig. E A064



Fig. H A151



Fig. K A162



Fig. C D1071



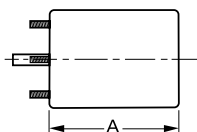
Fig. F D829



Fig. I A140



Fig. L A079



Products on this page are NOT SUITABLE for unattended equipment unless indicated by ▶ symbol. See inside back cover for additional information.

PSC motors use 5M 370V capacitors unless otherwise indicated.

Replacement Models

H.P.	Volts	Amps	RPM	Spd.	Model	Fig.	Type	Mtg.	Dia.	Rot.	"A" Dim	Shaft Dia. and Length	Reference No.
HILL REFRIGERATION													
1/3	208-230	2.9	1625	1	D801	F	PSC	Base	5.6	C.C.W.	4-1/2	1/2 x 4	5KCP39KG1369S
1	208/ 230	7.1-6.4	1075	1†	D800*† △	G	PSC	Base	5.6	C.W.	5-1/4	1/2 x 3-3/4	PP19162G, 5KCP39PGC030S 5KCP39PGC910S
HONEYWELL AIR CLEANER													
▶ 1/12-1/20-1/25	115	3.1-2.1 1.5	1050	3	D1054	H	SP	Band	5.0	C.W.	2-5/8	1/2 x 2-1/2	190386A 5KSP29DK1906S
HUSSMANN													
1/6	208-230	1.2	1625	1	D807*#	A	PSC	Stud, Base	5.6	C.C.W.	3-3/4	1/2 x 1-7/8	5KCP39EGC244T 5KSP39FG4771S
1/2	208-230	2.7	1725	1	D890	I	PSC	Stud	5.6	C.C.W.	4.5	1/2 x 3-1/2	259983 K55HXCTP-9963
1/500	120	.64	1100	1	K114^	J	SP	Stud	-	C.W.	-	.181 X 1-3/4	301-5734
ILG													
▶ 1/12	115/230	2.5-1.3	1550	1	D115	B	SP	Stud	4.4	C.C.W.	4-1/8	1/2 X 2	78-27-721T Fasco 7108-2237
▶ 1/10	115	3.1	1610	1	D1039	E	SP	Stud Band	4.4	C.C.W.	4-1/2	1/2 X 2-3/8	78-27-611N Fasco 7108-2171
INTER CITY													
1/40	208/230	.55	3000	1	D1167	C	SP	Lug	3.3	C.C.W.	4-7/8	5/16 x 1	1708-518, 7121-5854
—	115	1.5	3060	1	A134	K	SP	—	3.3	C.W.	—	—	INTER CITY, 7021-9335, 7021-8735, 7021-9499, 7021-8736, 7021-9499
—	115	0.7	3450	1	A145*•	L	PSC	—	3.3	C.C.W.	—	—	INTER CITY, 7062-4061
—	115	1	2800	1	A141	M	SP	—	3.3	C.W.	—	—	INTER CITY, 7021-8741, 7021- 8742, 7021-9188, 7021-9 498
—	208-230	0.5	3000	1	A148	N	SP	—	3.3	C.C.W.	—	—	INTER CITY, 7021-7617, 7021-9237
—	230	0.3	2800	1	A151	O	SP	—	3.3	C.W.	—	—	HEIL QUAKER HQ1050144

• Ball bearing motor # 4M 370V capacitor △ Separate connection for each voltage
 ^ Equipped with KFAN6046 fan blade † 15M 370V capacitor *4M 250V capacitor included
NOTE: Rotation is determined by looking at shaft end. Shaft length is measured from motor face.



Fig. A D807



Fig. E D1039



Fig. H D1054



Fig. K A134



Fig. N A148



Fig. B D115



Fig. F D801



Fig. I D890



Fig. L A145



Fig. O A151



Fig. C D1167



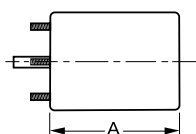
Fig. G D800



Fig. J K114



Fig. M A141



Products on this page are NOT SUITABLE for unattended equipment unless indicated by ▶ symbol. See inside back cover for additional information.

PSC motors use 5M 370V capacitors unless otherwise indicated.

Replacement Models

H.P.	Volts	Amps	RPM	Spd.	Model	Fig.	Type	Mtg.	Dia.	Rot.	"A" Dim	Shaft Dia. and Length	Reference No.
KOLD-DRAFT◆													
1/10	115	1.32	13	1	VS62-13*	A	PSC	-	-	-	-	5/8 x 2-1/4 Threaded	Flaker Ice Machine Gearmotor, V00682AU62
KRACK REFRIGERATION													
1/20	115/ 208-230	1.4/8	1550	1	D1158*	B	SP	BKT	3.3	C.W.	3-5/16	5/16 x 1-5/8	Commercial Refrigeration Units
1/20	115/ 208-230	1.4/ 0.76	1550	1	D1189*	C	SP	BKT	3.3	C.W.	3-1/8	5/16 x 1-5/8	11528, 11529 JB2PO46N, JA2P216N JA2P217N, JB2PO47N 8354110940, 8254111030
KRAMER/TRENTON													
1/20	115	2.1	1550	1	D1152	E	SP	Stud	3.3	C.W.	2-7/8	5/16 x 2-3/8	5KSM59ES2001
1/20	230	1.0	1550	1	D1154	E	SP	Stud	3.3	C.W.	3-1/8	5/16 x 2-3/8	JA2R140N
1/2	208-230	4.0	1075	1	D2862+*	D	PSC	Base	5.6	Rev.	6-1/2	1/2 x 3	5KCP37PN244BS MTG3041
LARKIN COIL													
1/20	115	1.9	1550	1	D1101▼	E	SP	Stud	3.3	C.C.W.	2-3/4	5/16 x 2-1/4	Larkin No. 253-1194 Fasco No. 7163-2113
1/20	208-230	1.3	1550	1	D1103‡▼	E	SP	Stud	3.3	C.C.W.	3	5/16 x 2-1/4	Fasco No. 7163-3371, 253-1195
1/2	208-230	4.4	1075	1	D863+	F	PSC	Base	5.6	Rev.	6-3/4	1/2 x 3	SCS0500HI-CPM120-3, 5KCP39PGH728T

* Ball bearing motor + 7.5M 370V capacitor

‡ Not a direct replacement for 253-1194, but is an acceptable substitute

◆ KOLD-DRAFT is a registered Trademark of UNIFLOW MFG. CO.

▼ Special low temperature oil.

NOTE: Rotation is determined by looking at shaft end. Shaft length is measured from motor face.



Fig. A VS62-13



Fig. C D1189



Fig. E D1101, D1103,
D1152, D1154



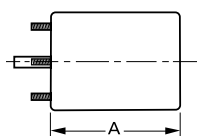
Fig. B D1158



Fig. D D2862



Fig. F D863,



Products on this page are NOT SUITABLE for unattended equipment unless indicated by ► symbol. See inside back cover for additional information.

PSC motors use 5M 370V capacitors unless otherwise indicated.

H.P.	Volts	Amps	RPM	Spd.	Model	Fig.	Type	Mtg.	Dia.	Rot.	"A" Dim	Shaft Dia. and Length	Reference No.
LEAR SIEGLER													
▶ 1/8	115	5.1	1070	1	D1046	A	SP	Base	5.0	C.W.	3"	1/2 x 2-1/4	305313-000-165 7151-0073, 7151-2826
LENNOX													
1/30	115	1.5	3000	1	D1198	J	SP	Lug	3.3	C.C.W.	3-1/8	5/16 x 2-1/3	7121-8774
1/4	230	1.9	1075	1	D814 #	B	PSC	Base	5.6	C.W.	3-3/4	1/2 x 3	P-8-2702, 5KCP39HGA124S
1/3-1/4-1/6-1/8	115	6.1-3.2 2.2-1.6	1075	4	D812	C	PSC	Base	5.6	C.W.	4-1/4	1/2 x 3-1/8	P-8-7505
1/3	208-230	2.2	1075	1	D816	D	PSC	Lug	5.6	C.W.	4	1/2 x 3-3/4	P-8-8041-A3048, 5KCP39HG0766T
1/3-1/5-1/6	115	7.3-5.1 3.9	825	3	D818∞	E	PSC	Base	5.6	C.W.	6-3/4	1/2 x 3	P-8-8325 5KCP39PGD698S
1/3	230	3.2	825	1	D2817	F	PSC	Base, Band	5.6	Rev.	5-3/4	1/2 x 6	5KCP39PG9701S, 5KCP39PG3490AS
1/2	230	2.6	1050	1	D2814 §•	G	PSC	Base	5.6	C.W.	5-3/4	1/2 x 3-1/4	P-8-5770
3/4-1/2-1/3	230	5.9-3.0- 2.4	1075	3	D813♦	H	PSC	Base	5.6	DS	6	5-1/4 x 5/8 x 6-1/2	31C8201, K55HXRYT-8180, K63BHXHW-1158, 5KCP49NG1009, 5KCP35SN49S, P-8-6426
—	120	0.7	3000	1	A138	K	SP	—	3.3	C.C.W.	—	—	LENNOX, 7021-8657, 7021-8825
—	120	0.7	3000	1	A135	L	SP	—	3.3	C.C.W.	—	—	LENNOX, 7021-8812, 7021-8819
—	115	1.8	3400	1	A163	M	SP	—	3.3	C.C.W.	—	—	LENNOX, 7021-9450
—	120	0.8	3000	1	A164	N	SP	—	3.3	C.C.W.	—	—	LENNOX, 7021-9593
3/4-1/3	230	5.0-2.2	1075	2	D2818 ▶★	I	PSC	Base	5.6	Rev.	7-3/4	5/8 x 4-1/2 (Keyed)	P-8-8711 5KCP49SG1010S
1-1/2-1/3	115	11.8- 6.3-3.9	1075	3	D2816 ▶•	I	PSC	Base	5.6	Rev.	7-3/4	5/8 x 4	P-8-8326, 5KCP49SG1053S

- Ball bearing motor ▶ Not a direct replacement for 5KCP49SG1010S, but is an acceptable substitute
- ★ 15M 370V capacitor ♦ 10M 370V capacitor # 4M 370V capacitor ∞ 12.5M 370V capacitor
- § 5M 370V capacitor ▶• 20M 370V capacitor

NOTE: Rotation is determined by looking at shaft end. Shaft length is measured from motor face.



Fig. A D1046



Fig. D D816



Fig. G D2814



Fig. J D1198



Fig. M A163



Fig. B D814



Fig. E D818



Fig. H D813



Fig. K A138



Fig. N A164



Fig. C D812



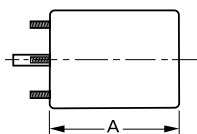
Fig. F D2817



Fig. I D2816, D2818



Fig. L A135



Products on this page are NOT SUITABLE for unattended equipment unless indicated by ▶ symbol. See inside back cover for additional information.

PSC motors use 5M 370V capacitors unless otherwise indicated.

Replacement Models

H.P.	Volts	Amps	RPM	Spd.	Model	Fig.	Type	Mtg.	Dia.	Rot.	"A" Dim	Shaft Dia. and Length	Reference No.
MAGIC CHEF													
1/4	208-230	2.2	1075	1	D1091	I	PSC	Band	5	C.C.W.	4-1/2	1/2 x 2-3/4	35035B001, 322P859, DE3L038
—	230	.5	3000	1	A081*^†	J	SP	—	3.3	C.C.W.	—	—	35035B001, 322P859, DE3L038
MATHIESEN													
1" Stack	115	1.1	3000	1	K161	H	SP	Stud	—	C.C.W.	—	.2178 x 1.15	Many Freezer Case Applications
McQUAY													
1/25-1/35-1/65	115	1.1-9.6	1200	3	D1144 #	B	PSC	Stud	3.3	C.W.	4-3/4	3/8 x 5-5/8	BA2H015
1/15	115/230	1.7-9	1500	1	D1142	A	SP	Stud	3.3	C.W.	3-1/2	5/16 x 2-1/2	879-382-562 ZB-00
1/10-1/12-1/15	115	2.2-2.0 1.7	1500	3	D1140 +	C	PSC	Base	3.3	D.S.	4-3/4	5-5/8 x 3/8 x 5-5/8	879-382564B-00
1/15-1/25-1/35	115	1.7 1.1-9	1000	3	D1141 #	C	PSC	Base	3.3	D.S.	4-3/4	5-5/8 x 3/8 x 5-5/8	879-382563B-00
▶ 3/4-1/2	460	2.5-1.6	1075	2	D915*+★	D	PSC	Band	5.6	Rev.	5-1/3	5/8 x 4-1/2	F2417-121479 Marathon EWB48A110558AE
MIAMI/CAREY													
1/35-1/100	115	1.4-5	1550	2	D534	E	SP	Band	3.3	C.W.	2-1/2	1/4 x 1	12324 L
MILLER													
▶ 1/8	115	6.0	1070	1	D1082	F	SP	Lug	5.0	C.W.	4	1/2 x 3-1/4	MILLER 103080002, FASCO 7152-0020, U.E.-DA3F130N
1/6	115	6.6	1050	1	S156	G	SP	Base	5.0	C.W.	3-1/2	1/2 x 3-7/8	MMG Series 80 & 100 MOC Series 80 & 100 CFM Series 80 & 100

+ 7.5M 370V capacitor
★ 15M 370V capacitor

• Ball bearing motor
4M 370V capacitor

‡ Not a direct replacement for 253-1194, but is an acceptable substitute.
^ Stainless steel shaft
† Replacement for Airease

NOTE: Rotation is determined by looking at shaft end. Shaft length is measured from motor face.



Fig. A D1142



Fig. C D1140, D1141



Fig. E D534



Fig. G S156



Fig. I D1091



Fig. B D1144



Fig. D D915



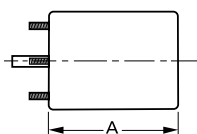
Fig. F D1082



Fig. H K161



Fig. J A081



Products on this page are NOT SUITABLE for unattended equipment unless indicated by ▶ symbol. See inside back cover for additional information.

PSC motors use 5M 370V capacitors unless otherwise indicated.

H.P.	Volts	Amps	RPM	Spd.	Model	Fig.	Type	Mtg.	Dia.	Rot.	"A" Dim	Shaft Dia. and Length	Reference No.
MUELLER													
1/12/120 in/lbs	115/230	1.85 1.0	36	1	V44-36*	J	SP	Lug	-	C.C.W.	8-7/8	3/4 x 2-3/16	Mueller V01535A144(30152) GritonV01734AC44 Babson V00827AA44

NESBITT/BLOWER WHEELS						
Model	Diameter	Width	Rot.	Fig.	Bore	Replaces
2-6139	6-5/16	6-1/4	C.C.W.	A	3/4	HVAC Wall and Ceiling units

H.P.	Volts	Amps	RPM	Spd.	Model	Fig.	Type	Mtg.	Dia.	Rot.	"A" Dim	Shaft Dia. and Length.	Reference No.
NORDYNE													
—	115	1.1	3000	1	A131	K	—	SP	3.3	C.W.	—	—	7021-9132, 7021-10171, 7021-10159, 7021-9661
—	115	1.1	3000	1	A132	L	—	SP	3.3	C.W.	—	—	7021-7973

NUTONE													
H.P.	Volts	Amps	RPM	Spd.	Model	Fig.	Type	Mtg.	Dia.	Rot.	"A" Dim	Shaft Dia. and Length.	Reference No.
▶ .75" (STACK)	120	.9	3000	1	K109	B	SP	Stud	-	C.C.W.	C Frame	.2178 x 2.37	C-68626, C-68627 9425F, 9415F, VENT. 9424FA, 9415FA FAN
▶ .55" (STACK)	120	1.1	3000	1	K111	C	SP	Stud	-	C.C.W.	C Frame	.2178 x 1.94	65878 • VENT FAN
▶ 1.00" (STACK)	120	1.0	3000	2	K112	D	SP	Stud	-	C.W.	C Frame	.2178 x 1.46	52367 RANGE HOOD
▶ .75" (STACK)	120	1.2	3000	1	K113	E	SP	Stud	-	C.C.W.	C Frame	.2178 x 1.15	63675,9605-N 9665-N VENT, FAN
▶ 1/100	115	.6	1500	1	D540	I	SP	Stud	3.3	C.W.	2-1/8	1/4-2-1/4	Bathroom and Kitchen Vents
▶ 1/100	115	.6	1500	1	D541	I	SP	Stud	3.3	C.C.W.	2-1/8	1/4-2-1/4	26750 Bathroom and Kitchen Vents
▶ 1/100	115	.65	1550	1	D1109	F	SP	Stud	3.3	C.C.W.	2-1/16	1/4 x 3/4	23405, 23388
▶ 1/50-1/100	115	.9-5	3000	2	D1106	G	SP	Stud	3.3	C.W.	2-9/16	1/4 x 1-3/16	26733, RANGE HOOD FAN MOTORS
▶ 1/10	115	3.2	1550	1	D1107*	H	SP	Band	3.3	C.C.W.	4.00"	5/16 x 1-3/8	Nutone 67176, 32997 UE-JA25034N, JB2K016N

• Ball bearing motor

NOTE: Rotation is determined by looking at shaft end. Shaft length is measured from motor face.



Fig. A 2-6139



Fig. C K111



Fig. E K113



Fig. G D1106



Fig. I D540, D541



Fig. K A131



Fig. B K109



Fig. D K112



Fig. F D1109



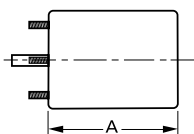
Fig. H D1107



Fig. J V44-36



Fig. L A132



Products on this page are NOT SUITABLE for unattended equipment unless indicated by ▶ symbol. See inside back cover for additional information.

PSC motors use 5M 370V capacitors unless otherwise indicated.