

H.P.	Volts	Amps	RPM	Spd.	Model	Fig.	Type	Mtg.	Dia.	Rot.	"A" Dim	Shaft Dia. and Length	Reference No.
PATTON													
1/4-1/12	115	3.2-2.4	1100	2	D824#	B	PSC	Pedestal	5.6	C.W.	5-3/4	1/2 x 3-1/2	7126-0485, 7126-0922
PENN VENTILATOR													
▶ 1/15	115	2.3	1050	1	D342 †	A	SP	Stud	5.0	C.W.	2-5/8	3/8 x 2	7151-3081, 7151-3565
▶ 1/20	115	2.0	1045	1	D1036	A	SP	Band Stud	5.0	C.W.	2-3/8	3/8 x 2-1/8	7151-2139 ROOF TOP VENT Z8
PMI/VALCUN HART													
—	115	0.7	3450	1	A142#	F	PSC	—	3.3	C.W.	—	—	7062-2513
RHEEM/RUUD (continued on next page)													
3/4-1/2-1/3-1/4	115	9.5-7.2 5.6-3.5	1075	4	D724 ■▲	E	PSC	Brkt	5.6	Rev.	5-3/4	1/2 x 6	Various
1/2-1/3-1/4-1/5	115	7.3	1075	4	D806 ■	E	PSC	Brkt	5.6	Rev.	4-3/4	1/2 x 3-3/4	51-23012-41
1/2-1/3	208-230	4.0-2.8	1075	2	D831 ‡	C	PSC	Band	5.6	D.S.	6-3/4	7-1/8 x 1/2 x 7-1/8	Marathon X231, Leece Neville RE128, Amana, Rheem/Ruud, Luxaire, American Standard
1/3	208-230	2.0	1075	1	D2834 ^	D	PSC	Stud	5.6	C.W.	4	1/2 x 4-1/4	51-21853-83

D2834 Use 5M 370V for 208-230V applications and 7.5M 370V for 200V applications.

† Mounts on (3) P/N 0061-1518 Coleman Mounts

• Ball bearing motor

‡ 7.5M 370V

4M 370V capacitor

^ Has 4 drilled and tapped holes in shell.

■ Has 8 drilled and tapped holes in shell.

▲ 15M 370V capacitor

NOTE: Rotation is determined by looking at shaft end. Shaft length is measured from motor face.



Fig. A D324, D1036



Fig. C D831



Fig. E D724, D806



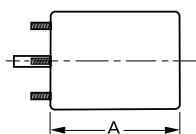
Fig. B D824



Fig. D D2834



Fig. F A142



Products on this page are NOT SUITABLE for unattended equipment unless indicated by ▶ symbol. See inside back cover for additional information.

PSC motors use 5M 370V capacitors unless otherwise indicated.

H.P.	Volts	Amps	RPM	Spd.	Model	Fig.	Type	Mtg.	Dia.	Rot.	"A" Dim	Shaft Dia. and Length	Reference No.
RHEEM/RUUD (continued)													
1/3-1/4	208-230	2.3/1.6	825	2	D815 ■▲	J	PSC	Bracket	5.6	C.W.	4-1/2	1/2 x 2-1/3	51-23103-07
1/5	208-230	1.3	1075	1	D2840^	F	PSC	Stud	5.6	C.W.	3-3/4	1/2 x 4-1/8	51-21853-82
1/6	208-230	1.2	825	1	D2842^	E	PSC	Stud	5.6	C.W.	4	1/2 x 4-1/4	51-20760-11
1/8	208-230	1.1	825	1	D832^	A	PSC	Stud	5.6	Rev.	4	1/2 x 4-3/4	21276-02 21276-01 512076-01
1/10	208-230	.8	825	1	D2844 †▲	E	PSC	Stud	5.6	C.W.	3-3/4	1/2 x 4-1/4	51-20761-11
1/15	230/460	1.2, 0.6	3000	1	D459•	H	SP	Stud	3.3	C.W.	7	1/4 x 3	HC24AU725A, JB1P044 AB1S078, JB1R039 AB1S029, S88-556
1/200	208-230	.25	3000	1	K628	C	SP	Bracket	-	C.W.	4.9	1/4 x 1-1/2	51-21964-01, 7102-0628
79CFM	115	1.1	3000	1	A079	B	SP	-	-	C.C.W.	-	-	74-70-21504-03-04 74-70-21496-03-01 JAIM106, JAIM137, 7021-5615
86CFM	115	1.3	3200	1	A086	D	SP	-	-	C.W.	-	-	7021-5990
90CFM	115	1.1	3000	1	A090	G	SP	-	-	C.W.	-	-	RHEEM 70-21496-01 7021-5239, JA1M102
—	115	0.75	3450	1	A136@	K	PSC	-	3.3	C.W.	-	-	RHEEM, 7062-3861
—	115	0.95	3000	1	A139	L	SP	-	3.3	C.W.	-	-	RHEEM, 7021-7577
—	115	0.7	3450	1	A142+	M	PSC	-	3.3	C.W.	-	-	RHEEM, 7062-1881
REZNOR													
1/8	480	.32	3200	1	D461	I	PSC	Stud	3.3	C.C.W.	4-1/4	5/16 x 3-1/3	7162-0396

D2840 Use 3M 370V for 208-230V applications and 5M 370V for 200V applications.

D2842 Use 5M 370V for 208-230V applications and 7.5M 370V for 200V applications.

† 3M 370V

^ Has 4 drilled and tapped holes in shell.

▲ 10M 370V capacitor not included

+ Capacitor included, 4MFD, 370 VAC

• Ball bearing

■ Includes 8 drilled and tapped holes in shell

@ Capacitor not included; capacitor rating 4MFD, 370 VAC

NOTE: Rotation is determined by looking at shaft end. Shaft length is measured from motor face.



Fig. A D832



Fig. D A086



Fig. G A090



Fig. J D815



Fig. M A142



Fig. B A079



Fig. E D2842, D2844



Fig. H D459



Fig. K A136



Fig. C K628



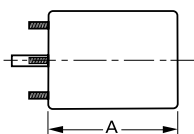
Fig. F D2840



Fig. I D461



Fig. L A139



Products on this page are NOT SUITABLE for unattended equipment unless indicated by ► symbol. See inside back cover for additional information.

PSC motors use 5M 370V capacitors unless otherwise indicated.

Replacement Models

H.P.	Volts	Amps	RPM	Spd.	Model	Fig.	Type	Mtg.	Dia.	Rot.	"A" Dim	Shaft Dia. and Length	Reference No.
SEARS/WHIRLPOOL													
1/30-1/65	115	1.0-.7	1500	2	D137	A	SP	Stud	3.3	D.S.	2-7/8	2 x 5/16 x 2	Rangehood
1/18-1/30	115	2.4-1.2	1330 1130	2	D1111	J	SP	Lug	3.3	C.C.W.LE	3-1/2	3 -1/8 x 5/16 x 2-3/8	JA25094, JA25110, JA25121N, A456301, A495601, A495603, 5500 BTU Window A/C; G000519549; G519549
1/15-1/20-1/30	115	1.1-.8 .6	1500	3	D323#	B	PSC	Stud, Band	3.3	D.S.	3-3/4	2-3/4 x 5/16 x 2-3/4	Small Window A/C
▶ 1/10-1/30	115	2.5-2.3	1500	2	D325■	C	SP	Lug	3.3	C.C.W.	3-1/2	1-3/4 x 5/16 x 2-3/8	Small Window A/C
1/8-1/10-1/15	115	1.7	1100	3	D857	D	PSC	Tapped	5.6	D.S.	3-1/2	3-1/8 x 1/2 x 4-1/8	Window A/C Using Delco Inside-Outside Motor 485932 KCP39PG97695
1/6-1/8-1/10	230	1.1-1.0 .9	1100	3	D858	D	PSC	Tapped Holes	5.6	D.S.	3-3/4	2-3/4 x 1/2 x 4-1/8	
1/3-1/5-1/8	230	1.7-1.5 1.3	1100	3	D859	D	PSC	Tapped Holes	5.6	D.S.	4-1/4	4-1/4 x 1/2 x 5-1/4	
1/2-1/3-1/4	230	3.2	1075	3	D860+	F	PSC	Base	5.6	D.S.	5-3/4	4-1/4 x 1/2 x 4-3/8	
SINGER													
1/4	277	1.3	1625	1	D879 §	G	PSC	Base	5.6	C.W.L.E.	4-1/4	1/2 x 8	Thru the Wall Commercial 5KCP39GG73342
1/10	208-230	1.5	3000	1	D1169	I	SP	Lug	3.3	C.C.W.	5-3/4	5/16 x 1	FASCO 7121-4066 Comfort Maker 1708-507
1/25	115/230	1.3/7	1550	1	D1164	H	SP	Stud	3.3	C.W.	3-1/8	5/16 x 2-1/2	JA2P091N JA2P0901N
▶ 1/40	208-230	.55	3000	1	D1167	E	SP	Lug	3.3	C.C.W.	4-7/8	5/16 x 1	1708-518, 7121-5854

+ 7.5M 370V capacitor § 5M 440V capacitor ■ Rotation is determined by viewing lug end. #3M 370V capacitor
NOTE: Rotation is determined by looking at shaft end. Shaft length is measured from motor face.



Fig. A D137



Fig. C D325



Fig. E D1167



Fig. G D879



Fig. I D1169



Fig. B D323



Fig. D D857, D858, D859



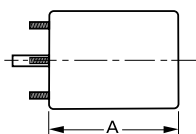
Fig. F D860



Fig. H D1164



Fig. J D1111



Products on this page are NOT SUITABLE for unattended equipment unless indicated by ▶ symbol. See inside back cover for additional information.

PSC motors use 5M 370V capacitors unless otherwise indicated.

H.P.	Volts	Amps	RPM	Spd.	Model	Fig.	Type	Mtg.	Dia.	Rot.	"A" Dim	Shaft Dia. and Length	Reference No.
TAPPAN													
73CFM	115-230	.8/.5	3000	1	A073 *	A	SP	-	3.3	C.C.W.	-	-	82932, 8251560133
TECUMSEH													
1/15	460	.6	1550	1	D475	D	SP	Stud	3.9	C.C.W.	4-1/2	5/16 x 2-1/2	Tecumseh 810G037A47 5KSP11FG1197CS
TEMPMASTER/OTASCO													
1/5-1/6-1/8	208-230	1.6-1.5 1.3	1400	3	D1033	B	PSC	Base	5.0	D.S.	3-3/4	2-3/4 x 1/2 x 3-1/2	M11730, 322P373 M12100, 322P454
THERMADOR (TRADEWINDS)													
▶ 1/20	115	2.0	1550	1	D1165	E	SP	Stud	3.3	D.S.	3	3-1/2 x 5/16 x 3-1/2	Tradewinds/Blower Motor
▶ 1/100	115	.5	1085	1	D1155	F	SP	Stud	3.3	C.C.W.	2-1/4	1/4 x 1	17-09-679, VQT-90, JA2M087R
TJERNLUND													
1/40	115	1.0	1500	1	D130	C	SP	Stud	3.3	C.W.	3-1/3	5/16 x 4-1/8	7163-6058

• Ball bearing motor

NOTE: Rotation is determined by looking at shaft end. Shaft length is measured from motor face.



Fig. A A073



Fig. C D130



Fig. E D1165



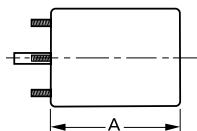
Fig. B D1033



Fig. D D475



Fig. F D1155



Products on this page are NOT SUITABLE for unattended equipment unless indicated by ▶ symbol. See inside back cover for additional information.

PSC motors use 5M 370V capacitors unless otherwise indicated.

H.P.	Volts	Amps	RPM	Spd.	Model	Fig.	Type	Mtg.	Dia.	Rot.	"A" Dim	Shaft Dia. and Length	Reference No.
TRANE													
69CFM	208-240	.5	3000	-	A069	A	SP	Stud	3.3	C.C.W.	-	-	38040252, 82252
75CFM	230	.4	3000	1	A075+	B	SP	Stud	3.3	C.C.W.	-	-	38050005
1/8	230	1.1	1550	1	D1050+†	C	PSC	Band	5.0	C.W.	3-1/4	1/2 x 3	WW94X236SP WW94X936PSC
1/8	208-230	.8	1650	1	D895#	D	PSC	Stud	5.6	C.W.	3-1/2	1/2 x 1-1/2	5KCP39BGR426S MOT 6363
1/15	115	1.3	850	3	D1089#	E	PSC	Base	5.0	Rev.	3-1/4	1/2 x 3	5KCP39DGM458AS, K48HXCFC-1327 MOT3589, MOT 3591 FASCO 7176-3020
1/15	115	.8	1100	3	D1090	F	PSC	Base	5.1	C.W.	3-1/2	10-1/2 x 1/2 x 11-1/2	MOT1877, K48HXBJA-956
1/25-1/40	115	.6-.4	1060-500	2	D1051+	G	PSC	Base	5.0	D.S.	3-1/4	11-1/8 x 1/2 x 11-1/8	Fan Coil
1/20-1/30-1/40	265	.5-.3	1100	3	D1058#	H	PSC	Lug	5.0	C.W.	3-5/8	1/2 x 2-1/2	5KCP29FK885S
-	115	0.95	3000	1	A143	I	SP	-	3.3	C.W.	-	-	TRANE, 7021-8428, 7021-8013, 7021-8924
-	115	1-.35	3000-2300	2	A146	J	SP	-	3.3	C.W.	-	-	TRANE, 7021-7986, 7021-8925, 7002-2531
-	115	.7	3450	1	A130	K	PSC	-	3.3	C.W.	-	-	TRANE, 7062-3956, 7062-3616
-	208-230	.5	3000	1	A150	L	SP	-	3.3	C.C.W.	-	-	TRANE, 7021-7833, 7021-8928
20th CENTURY													
-	115	1.3	3200	1	A086	M	SP	-	-	C.W.	-	-	7021-5853

• Ball bearing motor + 6M 370 V capacitor # 4M 370V capacitor
 † Original motor is shaded pole, D1050 is PSC to provide greater motor efficiency and permit closing shaft end of motor to prevent moisture from entering motor

NOTE: Rotation is determined by looking at shaft end. Shaft length is measured from motor face.



Fig. A A069



Fig. D D895



Fig. G D1051



Fig. J A146



Fig. M A086



Fig. B A075



Fig. E D1089



Fig. H D1058



Fig. K A130



Fig. C D1050



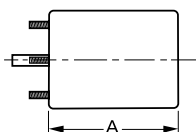
Fig. F D1090



Fig. I A143



Fig. L A150



Products on this page are NOT SUITABLE for unattended equipment unless indicated by ► symbol. See inside back cover for additional information.

PSC motors use 5M 370V capacitors unless otherwise indicated.

H.P.	Volts	Amps	RPM	Spd.	Model	Fig.	Type	Mtg.	Dia.	Rot.	"A" Dim	Shaft Dia. and Length	Reference No.
TYLER													
1/4	230	1.9	1625	1	D870#	H	PSC	Base	5.6	C.W.	4-3/4	1/2 x 3	5KCP39EGC053T Unit No. 760
UNIFLOW													
-	115	1.32	13	1	V562-13*	F	PSC	-	-	-	-	5/8 x 2-1/4	Flaker Ice Machine Gearmotor, V00682AU62
WHITE CONSOLIDATED INDUSTRIES													
1/18-1/30	115	2.4- 1.2	1330 1130	2	D1111	G	SP	Lug	3.3	C.C.W.LE	3-1/2	3-1/8 x 5/16 x 2-3/8	JA25094, JA25110, JA25121N, A456301, A495601, A495603, 5308013815, 5500 BTU Window A/C
WEIL McLAIN													
1/30	115	1.6	3300	1	D1190	E	SP	Lug	3.3	C.W.	4-7/8	5/16 x 1-3/4	7121-5750, JA1N074
WEST BEND/McGRAW EDISON													
1/50-1/65-1/80	115	1.1- 1.8 .6	1300	3	D1134	A	SP	Stud	3.3	C.W.	2-1/4	1/4 x 1-3/4	Portable Humidifier Motors
WESTINGHOUSE													
1/5	230	2.3	925	1	D262	B	PSC	Band	5.0	Rev.	3-7/8	1/2 x 4	Whisperaire 319P300A
1/5	208-230	1.6	1550	1	D1032#	C	PSC	Base	5.0	D.S.	3-7/8	6-1/4 x 1/2 x 6-1/4	Model No. 319P367A
1/18-1/30	115	1.85 1.5	1330 1130	2	D1111	G	SP	Lug	3.3	C.C.W.LE	3-1/2	3 x 5/16 x 2-1/3	JA25094, JA25110, JA25121N, A456301, A495601, A495603, 5500 BTU Window A/C; G000519549; G519549
1/16-1/25-1/35	115	1.9 1.7 1.4	1550	3	D1113□	D	SP	Lug	3.3	C.C.W.	3-1/8	2-7/16 x 5/16 x 3-1/4	8264H2290 6000 BTU Window Units

• Ball bearing motor ■ Rotation is determined by viewing lug end. # 4M 370V capacitor
 NOTE: Rotation is determined by looking at shaft end. Shaft length is measured from motor face.



Fig. A D1134



Fig. C D1032



Fig. E D1190



Fig. G D1111



Fig. B D262



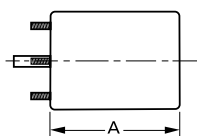
Fig. D D1113



Fig. F V562-13



Fig. H D870



Products on this page are NOT SUITABLE for unattended equipment unless indicated by ► symbol. See inside back cover for additional information.

PSC motors use 5M 370V capacitors unless otherwise indicated.

Replacement Models

H.P.	Volts	Amps	RPM	Spd.	Model	Fig.	Type	Mtg.	Dia.	Rot.	"A" Dim	Shaft Dia. and Length	Reference No.
WILLIAMSON													
80CFM	115	1.1	3000	1	A080	G	S.P.	—	—	C.W.	—	—	7021-5510, 02-568
118CFM	115	1.8	3000	1	A118	H	S.P.	—	—	C.W.	—	—	100,000 BTU Furnace 7021-6999, 7021-7042 Leads must be modified
YORK													
1/40	460	.37	3200	1	D1191	I	SP	Stud	3.3	C.C.W.	5-3/4	1/4 x 2-1/2	7121-7255
1/15	460	.6	3000	1	D1171•	A	SP	Stud	3.3	C.C.W.	6-3/4	1/4 x 2-1/2	024-24115-004 F33HXJB3621
1/5	208-230	1.2	1075	1	D1042	B	PSC	Band	5.0	D.S.	4-1/8	6-1/2 x 1/2 x 6-1/2	Cond. Fan, D1041 F47HXBGM-927
1/2	230	3.2	1050	1	D873•	C	PSC	Band	5.6	D.S.	4-1/2	9-3/4 x 1/2 x 9-3/4	K44HXJAF-4955
1-3/4-1/2	460	3.3-2.3 1.9	1100	3	D2871■†	F	PSC	Band	5.6	Rev.	6	1/2 x 3-1/2	024-21673, K55HXJFJ-2832 5KCP395GH913BS
65CFM	230	.60	3000	1	A063	D	SP	—	3.3	C.C.W.	—	—	26-22239
83CFM	230	.80	3000	1	A083•	E	SP	—	3.3	C.C.W.	—	—	026-16323-0000 026-20224-000, 7021-1373
—	208-230	.5	3000	1	A144^	J	SP	—	3.3	C.W.	—	—	YORK, 7021-6770
—	115	.7	3450	1	A137	K	PSC	—	3.3	C.W.	—	—	YORK, 7062-2442, 7062-3342, 7062-3484
—	115	.7	3450	1	A147	L	PSC	—	3.3	C.W.	—	—	YORK, 7062-3342, 024-25007-700
—	115	1.2	3000	1	A154	M	SP	—	3.3	C.W.	—	—	YORK, 7021-9428
—	115	.7	3450	1	A165	N	PSC	—	3.3	C.W.	—	—	YORK, 7062-3958

• Ball bearing motor ■ 25M 370V Capacitor ^ Includes centrifugal switch
 † Has special OEM wiring configuration. Not for general purpose 3 speed applications.
 NOTE: Rotation is determined by looking at shaft end. Shaft length is measured from motor face.



Fig. A D1171



Fig. D A063



Fig. G A080



Fig. J A144



Fig. M A154



Fig. B D1042



Fig. E A083



Fig. H A118



Fig. K A137



Fig. N A165



Fig. C D873



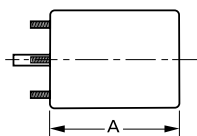
Fig. F D2871



Fig. I D1191



Fig. L A147



Products on this page are NOT SUITABLE for unattended equipment unless indicated by ► symbol. See inside back cover for additional information.

PSC motors use 5M 370V capacitors unless otherwise indicated.