



MARCH PUMPS

1819 PICKWICK AVE., GLENVIEW, IL 60026-1306, U.S.A
 PHONE: (847) 729-5300 - FAX: (847) 729-7062
 WWW.MARCHPUMP.COM

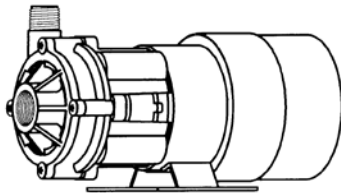
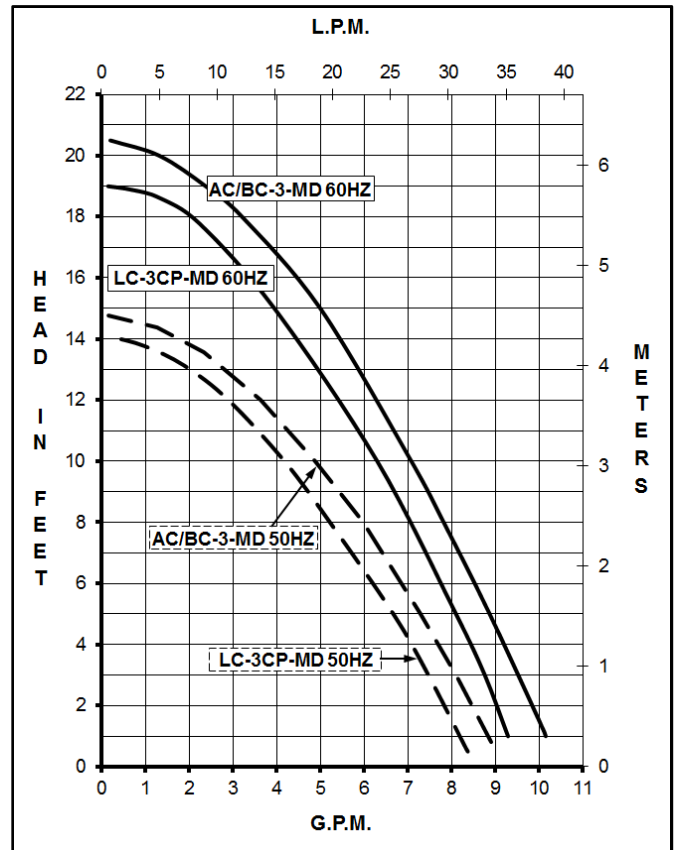
AC-3CP-MD, AC-3AP-MD BC-3CP-MD, BC-3AP-MD BC-3K-MD, LC-3CP-MD

DESCRIPTION: Series 3 are centrifugal magnetic drive pumps, eliminating the need for a shaft seal. Pumps can be serviced with a screwdriver. The "LC" model is hermetically encapsulated which allows the pump to be run fully submerged or in open air for complete moisture protection. See the parts list for a breakdown of parts.

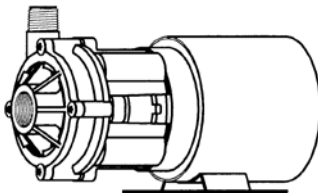
OPERATION: Pumps are not self-priming, lack a suction lift, and thus require a flooded suction. Pumps **cannot be run dry** because the impeller requires the liquid being pumped for lubrication. For liquids with a specific gravity greater than water, have a higher viscosity, or for elevated temperatures, a trimmed impeller may be necessary. For application assistance, contact March Pump.

ELECTRICAL: Motors are available in different electrical configurations such as 115V 60Hz, 115V 50/60Hz, or 230V 50/60Hz, 1 phase.

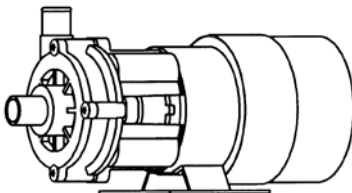
LIMITED WARRANTY: March pumps are guaranteed only against defects in workmanship or materials for a period of one year from date of manufacture pumping water. For the complete warranty and to register online go to www.marchpump.com/warranty-registration



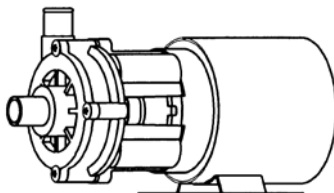
BC-3CP-MD



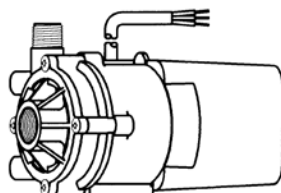
AC-3CP-MD



BC-3AP-MD



AC-3AP-MD



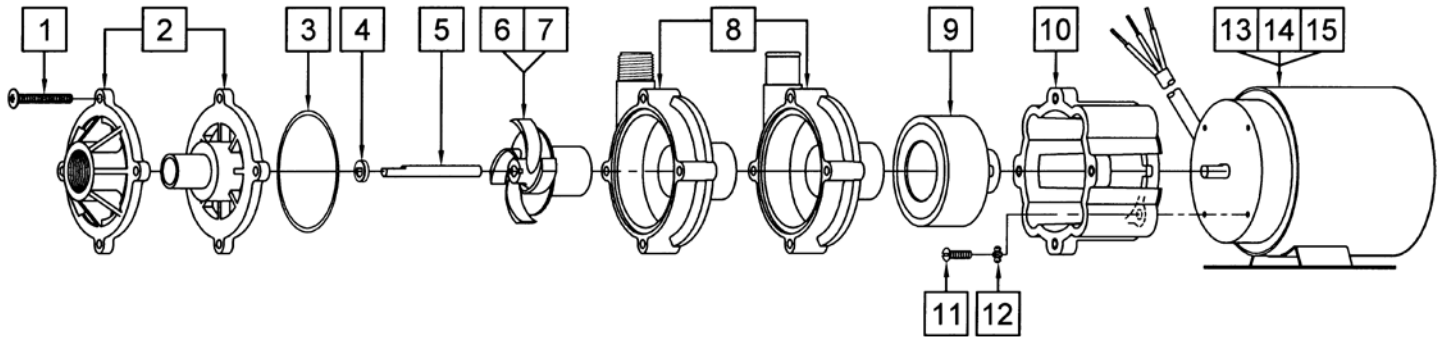
LC-3CP-MD

SPECIFICATIONS		AC-3CP-MD BC-3CP-MD	BC-3K-MD	AC-3AP-MD BC-3AP-MD	LC-3CP-MD
Max Flow	60Hz - 50Hz	10 gpm - 33 lpm			8.5 gpm - 31 lpm
Max Head	60Hz - 50Hz	20.5 ft / 8.9 psi - 4.5 m			19 ft / 8.2 psi - 4.3 m
Inlet - Outlet		3/4" FPT - 1/2" MPT		3/4" OD - 3/4" OD	3/4" FPT - 1/2" MPT
Max Internal Pressure		50 psi / 3.4 bar	75 psi / 5 bar	50 psi / 3.4 bar	25 psi / 1.7 bar
Max Liquid Temperature		190°F / 87°C	200°F / 93°C	190°F / 87°C	130°F / 54°C
Models		AC-3CP-MD		AC-3AP-MD	
		60Hz	50Hz	60Hz	50Hz
Motor Type		AC: Air Cooled			
Rating / Duty		U.L. listed motor / Continuous			
1Ph	115V	150 - 2.3		150 - 2.3	
	230V	134 - 0.9	141 - 1.0	134 - 0.9	141 - 1.0
		1/15 - 3450	0.049 - 2850	1/15 - 3450	0.049 - 2850
Electrical Connection	115V	3 ft (0.9 m) Cord			6 ft (1.8 m) Cord
	230V	6 ft (1.8 m) Cord			6 ft (1.8 m) Cord
Overall Pump Size (H x W x L)	115V	Inches	5 x 3.91 x 8.12	5 x 3.91 x 8.90	4.87 x 4.75 x 7.38
		cm	12.7 x 9.9 x 20.6	12.7 x 9.9 x 22.6	12.3 x 12.0 x 18.7
	230V	Inches	5 x 4 x 8.77	5 x 4 x 9.55	4.87 x 4.75 x 7.38
		cm	12.7 x 10.1 x 22.2	12.7 x 10.1 x 24.2	12.3 x 12.0 x 18.7
Packed Weight	115V	6.55 lbs / 2.97 kg			7.90 lbs / 3.58 kg
	230V	7.50 lbs / 3.40 kg			7.95 lbs / 3.60 kg
Models		BC-3CP-MD, BC-3K-MD		BC-3AP-MD	
		60Hz	50Hz	60Hz	50Hz
Motor Type		BC: Blast Cooled			
Rating / Duty		U.L. listed motor / Continuous			
1Ph	115V	134 - 2.1	143 - 1.8	134 - 2.1	143 - 1.8
	230V	134 - 0.9	141 - 1.0	134 - 0.9	141 - 1.0
		1/15 - 3450	0.049 - 2850	1/15 - 3450	0.049 - 2850
Electrical Connection		6 ft (1.8 m) Cord			
Overall Pump Size (H x W x L)	Inches	5 x 4 x 8.77		5 x 3.81 x 9.55	
	cm	12.7 x 10.1 x 22.2		12.7 x 9.6 x 24.2	
Packed Weight	115V	7.55 lbs / 3.42 kg			
	230V	7.60 lbs / 3.44 kg			
Model Abbreviations		C: Threaded Inlet/Outlet, A: Smooth Inlet/Outlet, K: Kynar, LC: Liquid Cooled			

All specifications & data are based on pumping water & are intended as a guideline only.

Specifications may vary with different motors.

PARTS LIST



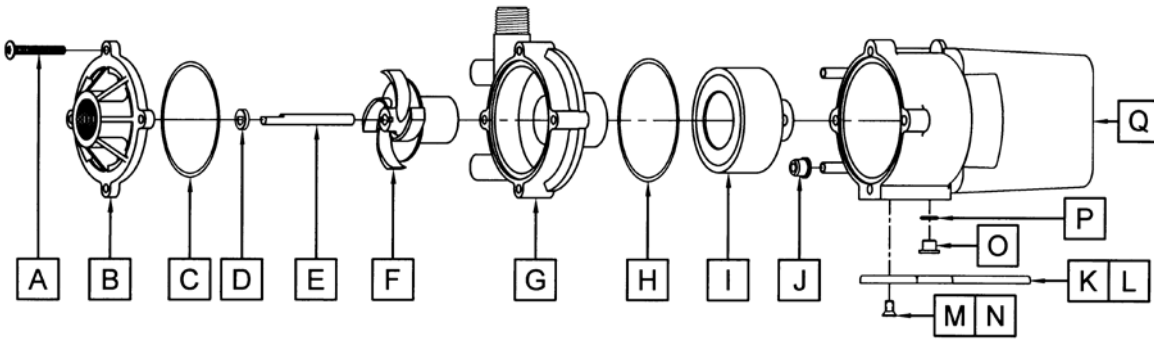
NOTE: When attaching the Drive Magnet to the motor shaft, position the face of the Drive Magnet 3/32 inch below the face of the Motor Bracket.

#	DESCRIPTION	MATERIAL	SIZE (Inches)		QTY.	PART #				
			AC-3CP-MD BC-3CP-MD	AC-3AP-MD BC-3AP-MD		AC-3CP-MD	AC-3AP-MD	BC-3CP-MD	BC-3AP-MD	BC-3K-MD
1	Screw	Stainless	#10-32 x 1-1/2 Lg.		4	0823-0008-1000				
2	Cover (Inlet)	Polypropylene	3/4 FPT	3/4 OD	1	0130-0021-1000	0130-0064-1000	0130-0021-1000	0130-0064-1000	
		Kynar	3/4 FPT Inlet		1					0130-0111-1000
3	"O" Ring	Buna N	3/32 CS x 2-13/16 OD		1	0130-0011-1000				
		Viton			1			0130-0033-1000		
	"O" Ring (Option)	Viton/Teflon			1			0130-0121-1000		
4	Thrust Washer	Ceramic			1			0130-0028-1000		
5	Shaft	Ceramic			1			0130-0024-1000		
6	Impeller	Polypropylene/Ceramic Magnet			1	0130-0020-0100				
7	Encapsulated Impeller	Polypropylene			1			0130-0069-0200		
		Kynar			1					0130-0112-0200
8	Rear Housing	Polypropylene	1/2 MPT	3/4 OD	1	0130-0018-1000	0130-0102-1000	0130-0018-1000	0130-0102-1000	
		Kynar	1/2 MPT		1					0130-0110-1000
9	Drive Magnet				1			0130-0043-0200		
10	Motor Bracket	Plastic			1			0130-0066-0100		
11	Screw	Stainless	#8-32 x 5/8 Lg.		4			0618-0027-1000		
12	Lock Washer	Steel	#8		4			0140-0014-1000		
13	AC Motor, 115V, 60Hz				1	0130-0022-1000				
14	BC Motor, 115V, 50/60Hz (Not Shown)				1			0130-0140-1000		
15	AC or BC Motor, 230V, 50/60Hz				1			0130-0049-1000		

MATERIALS IN CONTACT WITH SOLUTION

AC-3CP/3AP-MD: Polypropylene, Buna N, Ceramic, Ceramic Magnet

BC-3CP/3AP-MD: Polypropylene, Viton, Ceramic
BC-3K-MD: Kynar/Carbon Filled, Viton, Ceramic



MATERIALS IN CONTACT WITH SOLUTION

- Polypropylene
- Cupric Nickel, Buna N
- Ceramic, Ceramic Magnet

When submerged the following additional materials are in contact:
- Epoxy, Stainless Steel
- Rytan, & cord.

#	DESCRIPTION	MATERIAL	SIZE (Inches)	QTY.	LC-3CP-MD
A	Screw	Stainless	#10-32 x 1-1/2 Lg.	4	0823-0008-1000
B	Cover	Polypropylene	3/4 FPT Inlet	1	0130-0021-1000
C	"O" Ring	Buna N	3/32 CS x 2-13/16 OD	1	0130-0011-1000
D	Thrust Washer	Ceramic		1	0130-0028-1000
E	Shaft	Ceramic		1	0130-0024-1000
F	Impeller	Polypropylene/Ceramic Magnet		1	0130-0020-0100
G	Rear Housing & Plug Assy.	Polypropylene	1/2 MPT Outlet	1	0130-0019-0100
H	Bracket "O" Ring	Buna N	3/32 CS x 3 OD	1	0130-0025-1000
I	Drive Magnet			1	0130-0043-0200
J	Cooling Tube Seal	Buna N		2	0125-0007-1000
K	Mounting Base	Polypropylene		1	0125-0037-1000
L	Marine Base w/Grommets (Not Shown) (Option)	Polypropylene		1	0125-0113-0100
M	Base Screw	Stainless		2	0130-0132-1000
N	Marine Base Screw (Not Shown) (Option)	Stainless		2	0130-0146-1000
O	Plug (for Motor Bracket)			1	0125-0110-1000
P	"O" Ring	Viton	1/16 CS x 7/16 OD	1	0210-0008-1000
Q	L.C. Epoxy Motor, Bracket, Cord Assembly			N/A	Not Available

NOTE: Contact Factory for other materials and/or parts not listed.

0130-0032-1000 R25