



# MARCH PUMPS

1819 PICKWICK AVE., GLENVIEW, IL 60026-1306, U.S.A  
 PHONE: (847) 729-5300 - FAX: (847) 729-7062  
 WWW.MARCHPUMP.COM

## AC-4C-MD, BC-4C-MD, AC-4A-MD, BC-4A-MD, BC-4K-MD

### DESCRIPTION:

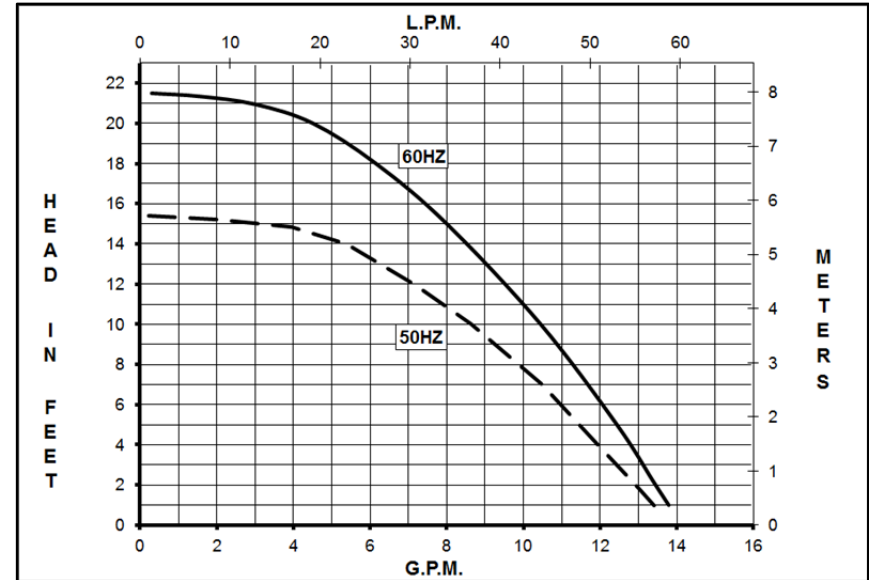
Series 4 are centrifugal magnetic drive pumps, eliminating the need for a shaft seal. Pumps can be serviced with a screwdriver. See the parts list for a breakdown of parts.

### OPERATION:

Pumps are not self-priming, lack a suction lift, and thus require a **flooded suction**. Pumps **cannot be run dry** because the impeller requires the liquid being pumped for lubrication. For liquids with a specific gravity greater than water, have a higher viscosity, or for elevated temperatures, a trimmed impeller may be necessary. For application assistance, contact March Pump.

### LIMITED WARRANTY:

March pumps are guaranteed only against defects in workmanship or materials for a period of one year from date of manufacture pumping water. For the complete warranty and to register online go to [www.marchpump.com/warranty-registration](http://www.marchpump.com/warranty-registration)

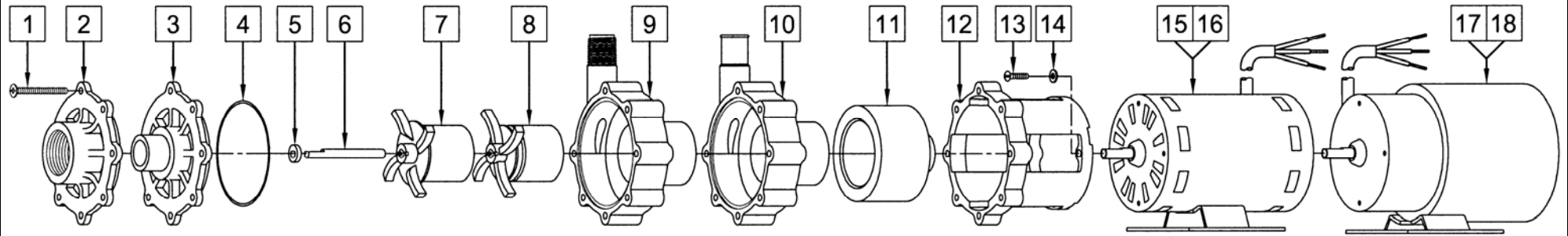


SPECIFICATIONS	AC-4C-MD		AC-4A-MD		BC-4C-MD		BC-4A-MD		BC-4K-MD		
Model Abbreviations	C/K: Threaded Inlet/Outlet, A: Smooth Inlet/Outlet, K: Kynar, C/A: Polypropylene										
Max Flow	60Hz {14 gpm} - 50Hz {50 lpm}										
Max Head	60Hz {21.5 ft / 9.3 psi} - 50Hz {4.7 m}										
Inlet - Outlet	1" FPT - 1/2" MPT		1" OD - 3/4" OD		1" FPT - 1/2" MPT		1" OD - 3/4" OD		1" FPT - 1/2" MPT		
Max Internal Pressure	50 psi / 3.4 bar										
Max Liquid Temperature	190°F / 87°C										
Overall Pump Size (H x W x L)	115V	5.57" x 5.11" x 9.77" 14.1 cm x 12.9 cm x 24.8 cm		5.57" x 5.11" x 10.34" 14.1 cm x 12.9 cm x 26.2 cm		5.65" x 5.36" x 10.18" 14.1 cm x 13.6 cm x 25.8 cm		5.65" x 5.36" x 10.74" 14.1 cm x 13.6 cm x 27.2 cm		5.65" x 5.36" x 10.18" 14.1 cm x 13.6 cm x 25.8 cm	
	230V	5.57" x 5.07" x 10.09" 14.1 cm x 12.8 cm x 25.6 cm		5.57" x 5.07" x 10.65" 14.1 cm x 12.8 cm x 27.0 cm		5.65" x 5.36" x 10.18" 14.1 cm x 13.6 cm x 25.8 cm		5.65" x 5.36" x 10.74" 14.1 cm x 13.6 cm x 27.2 cm		5.65" x 5.36" x 10.18" 14.1 cm x 13.6 cm x 25.8 cm	
Packed Weight	115V	8.05 lbs / 3.65 kg		8.15 lbs / 3.69 kg		8.15 lbs / 3.69 kg		8.15 lbs / 3.69 kg		8.40 lbs / 3.81 kg	
	230V	7.50 lbs / 3.40 kg		8.15 lbs / 3.69 kg		8.15 lbs / 3.69 kg		8.15 lbs / 3.69 kg		8.40 lbs / 3.81 kg	
Models	AC-4C-MD & AC-4A-MD					BC-4C-MD, BC-4A-MD, & BC-4K-MD					
	60Hz - 115V	50Hz - 115V	60Hz - 230V	50Hz - 230V		60Hz - 115V	50Hz - 115V	60Hz - 230V	50Hz - 230V		
Motor Type	AC: Air Cooled					BC: Blast Cooled (Models have an encapsulated impeller magnet)					
Rating / Duty	U.L. listed motor / Continuous										
1Ph	Watts - Amps	172 - 1.75	121 - 1.75	165 - 0.75	126 - 0.75	179 - 1.9	125 - 1.9	178 - 0.75	121 - 0.75		
	Hp / Kw - Rpm	1/12 - 3450	0.062 - 2850	1/12 - 3450	0.062 - 2850	1/10 - 3450	0.074 - 2850	1/10 - 3450	0.074 - 2850		
Electrical Connection	3 ft (0.9 m) Cord					3 ft (0.9 m) Cord					
Materials in Contact With Solution:	Polypropylene, Ceramic, Buna N, Ceramic Magnet					Polypropylene, Ceramic, Viton			Kynar/Carbon Filled, Viton, Ceramic		

Motors are available in different electrical configurations such as 115V 50/60Hz, and 230V 50/60Hz, 1 phase.

All specifications & data are based on pumping water & are intended as a guideline only. Specifications may vary with different motors.

## PARTS LIST



**NOTE:** When attaching the Drive Magnet to the motor shaft, position the face of the Drive Magnet 1/16 inch below the face of the Motor Bracket.

#	DESCRIPTION	MATERIAL	SIZE (Inches)	QTY.	PART #				
					AC-4C-MD	AC-4A-MD	BC-4C-MD	BC-4A-MD	BC-4K-MD
1	Screw	Stainless Steel	#8-32 x 1-3/4 Lg.	7			0150-0021-1000		
2	Cover	Polypropylene	1 FPT Inlet	1	0150-0032-1000		0150-0032-1000		
		Kynar		1				0150-0124-1000	
3	Cover	Polypropylene	1 OD Inlet	1		0150-0150-1000		0150-0150-1000	
4	"O" Ring	Buna-N	1/16 CS x 3 OD	1	0135-0007-1000				
	"O" Ring	Viton	1/16 CS x 3 OD	1				0135-0023-1000	
	"O" Ring (Option)	Viton/Teflon	0.070 CS x 3-1/8 OD	1				0150-0171-1000	
5	Thrust Washer	Ceramic		1				0130-0028-1000	
6	Shaft	Ceramic		1				0130-0024-1000	
7	Encapsulated Impeller	Polypropylene		1				0145-0033-0200	
		Kynar		1					0145-0039-0200
8	Impeller	Polypropylene/Ceramic Magnet		1	0145-0011-0100				
9	Rear Housing w/Thrust Washer	Polypropylene/Ceramic	1/2 MPT Outlet	1	0150-0031-0100			0150-0031-0100	
		Kynar/Ceramic		1					0150-0123-0100
10	Rear Housing w/Thrust Washer	Polypropylene/Ceramic	3/4 OD Outlet	1		0150-0159-0100		0150-0159-0100	
11	Drive Magnet			1				0145-0027-0100	
12	Motor Bracket	Plastic		1				0145-0010-1000	
13	Screw	Stainless Steel	#8-32 x 5/8 Lg.	4				0618-0027-1000	
14	Washer Flat	Stainless Steel	#8	4				0858-0004-1000	
15	AC Motor, 115V, 50/60Hz			1	0145-0012-1000				
16	AC Motor, 230V, 50/60Hz			1	0145-0029-1000				
17	BC Motor, 115V, 50/60Hz			1				0145-0035-1000	
18	BC Motor, 230V, 50/60Hz			1				0145-0036-1000	

NOTE: Contact Factory for other materials and/or parts not listed.

0145-0023-1000 R20