



# MARCH PUMPS

1819 PICKWICK AVE., GLENVIEW, IL 60026-1306, U.S.A  
 PHONE: (847) 729-5300 - FAX: (847) 729-7062  
 WWW.MARCHPUMP.COM

## MDX-MT3, TE-MDX-MT3, MDK-MT3, TE-MDK-MT3

### DESCRIPTION:

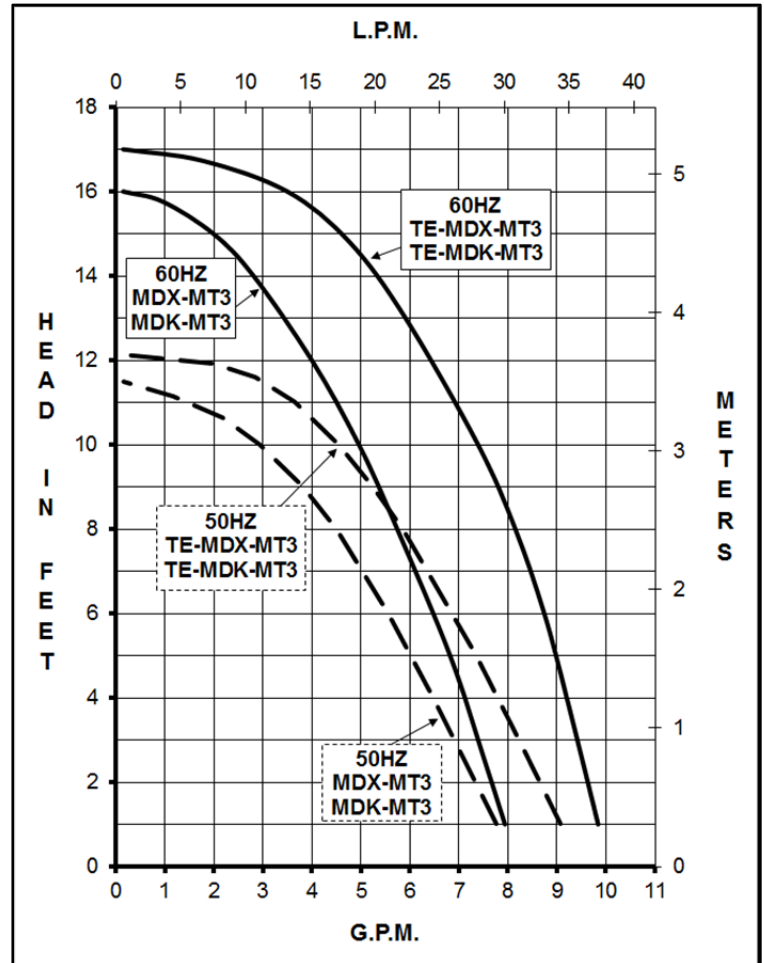
Series MDX & MDK are centrifugal magnetic drive pumps, eliminating the need for a shaft seal. Pumps can be serviced with a screwdriver. See the parts list for a breakdown of parts.

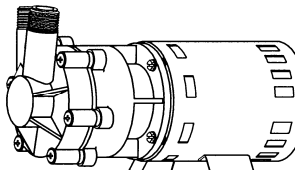
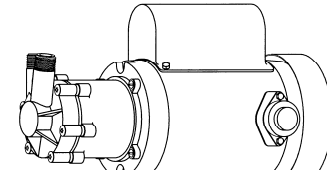
### OPERATION:

Pumps are not self-priming, lack a suction lift, and thus require a **flooded suction**. Pumps **cannot be run dry** because the impeller requires the liquid being pumped for lubrication. For liquids with a specific gravity greater than water, have a higher viscosity, or for elevated temperatures, a trimmed impeller may be necessary. For application assistance, contact March Pump.

### ELECTRICAL:

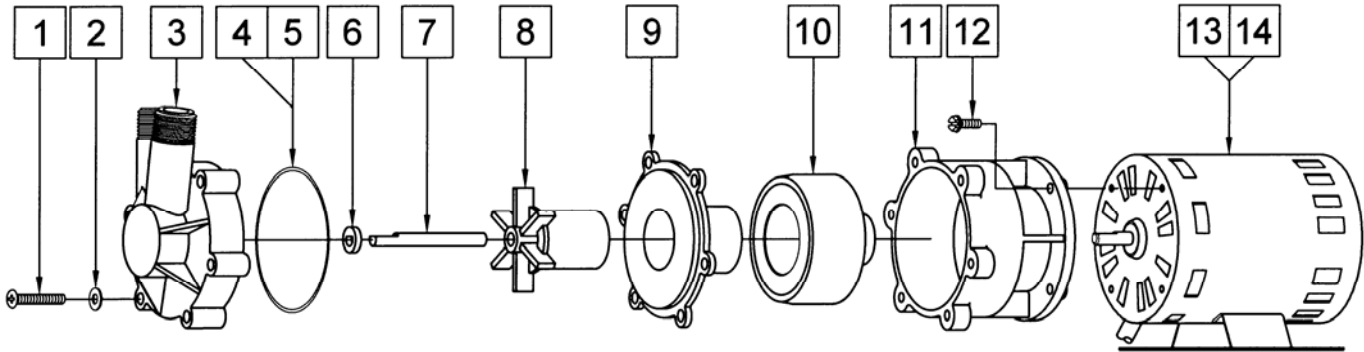
The MDX-MT3 & MDK-MT3 open air cooled motors are available in different electrical configurations such as 115V 50/60Hz, and 230V 50/60Hz, 1 phase. The TE-MDX-MT3 & TE-MDK-MT3 motor is totally enclosed fan cooled, dual 115/230V, 50/60 Hz, 1 phase.



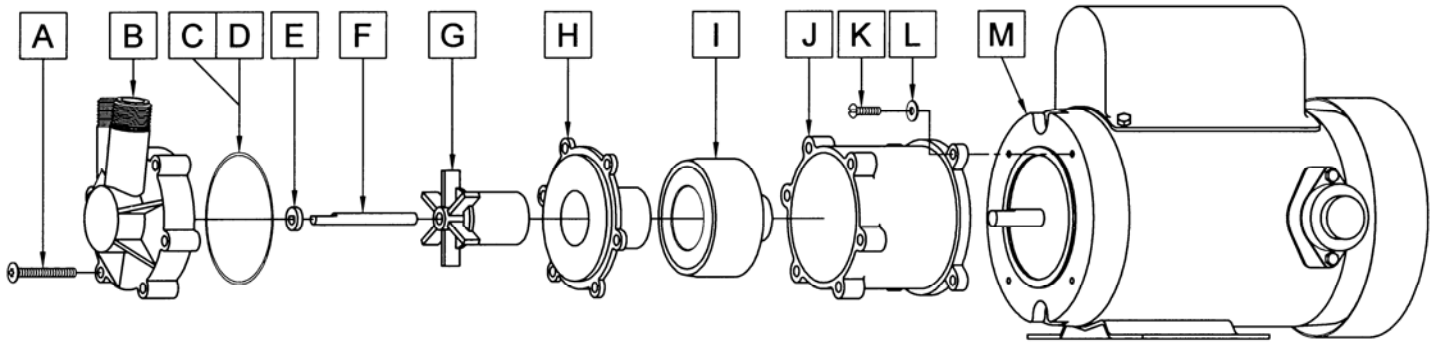
SPECIFICATIONS	MDX-MT3 & MDK-MT3				TE-MDX-MT3 & TE-MDK-MT3				
									
Model Abbreviations	X: Ryton, K: Kynar, TE: Totally Enclosed Fan Cooled								
Max Flow	60Hz {8 gpm} - 50Hz {30 lpm}				60Hz {10 gpm} - 50Hz {35 lpm}				
Max Head	60Hz {16 ft / 6.9 psi} - 50Hz {3.5 m}				60Hz {17 ft / 7.4 psi} - 50Hz {3.7 m}				
Inlet - Outlet	1/2" MPT - 1/2" MPT								
Internal Pressure	75 psi / 5 bar Max								
Liquid Temperature	200°F / 93°C Max								
	Separate 115V or 230V				Dual 115/230V				
	60Hz - 115V	50Hz - 115V	60Hz - 230V	50Hz - 230V	60Hz - 115V	50Hz - 115V	60Hz - 230V	50Hz - 230V	
Motor Type	Air Cooled				TEFC				
Rating / Duty	U.L. listed motor / Continuous				U.L. listed motor / Continuous				
1Ph	Watts - Amps	120 - 1.35	114 - 1.35	117 - 0.85	124 - 0.80	115 - 1.0	95 - 1.04	115 - 0.5	95 - 0.52
	Hp / Kw - Rpm	1/25 - 3450	0.029 - 2850	1/25 - 3450	0.029 - 2850	1/15 - 3450	0.049 - 2850	1/15 - 3450	0.049 - 2850
Electrical Connection	3 ft (0.9 m) Cord				Conduit Box				
Overall Size (H x W x L)	115V	4.82" x 3.70" x 8.41" - 12.2cm x 9.3cm x 21.3cm			7.19" x 8.02" x 12.42" - 18.2cm x 20.3cm x 31.5cm				
	230V	4.82" x 3.70" x 9.02" - 12.2cm x 9.3cm x 22.9cm			7.19" x 8.02" x 12.42" - 18.2cm x 20.3cm x 31.5cm				
Packed Weight	115V	5.85 lbs / 2.65 kg			20.65 lbs / 9.3 kg				
	230V	6.20 lbs / 2.81 kg			20.65 lbs / 9.3 kg				
Materials in Contact with Solution:	MDX-MT3: Ryton, Ceramic, Viton MDK-MT3: Kynar, Ceramic, Viton				TE-MDX-MT3: Ryton, Ceramic, Viton TE-MDK-MT3: Kynar, Ceramic, Viton				

All specifications & data are based on pumping water & are intended as a guideline only. Specifications may vary with different motors.

**PARTS LIST**



#	DESCRIPTION	MDX-MT3	MDK-MT3	SIZE (Inches)	QTY.	MDX-MT3	MDK-MT3
1	Screw	Stainless		#10-32 x 1-1/8 Lg.	6	0135-0181-1000	
2	Washer	Stainless		#10	6	0150-0051-1000	
3	Front Housing	Ryton	Kynar	1/2 MPT	1	0135-0088-1000	0135-0152-1000
4	"O" Ring	Viton		1/16 CS x 2-7/8 OD	1	0135-0046-1000	
5	"O" Ring (Option)	Teflon		1/16 CS x 2-7/8 OD	1	0135-0122-1000	
6	Thrust Washer	Ceramic			1	0130-0028-1000	
7	Shaft	Ceramic			1	0130-0024-1000	
8	Impeller	Ryton	Kynar		1	0135-0113-0200	0135-0154-0200
9	Rear Housing	Ryton	Kynar		1	0135-0087-1000	0135-0153-1000
10	Drive Magnet			0.250 Bore	1	0130-0043-0100	
11	Motor Bracket	Plastic			1	0135-0135-0100	
12	Screw (Hex Washer Head)	Stainless		#8-32 x 1/2 Lg.	4	0135-0169-1000	
13	Motor, 115V, 50/60Hz				1	0135-0114-1000	
14	Motor, 230V, 50/60Hz				1	0135-0136-1000	



#	DESCRIPTION	TE-MDX-MT3	TE-MDK-MT3	SIZE (Inches)	QTY.	TE-MDX-MT3	TE-MDK-MT3
A	Screw	Stainless		#10-32 x 1-1/2 Lg.	6	0823-0008-1000	
B	Front Housing	Ryton	Kynar	1/2 MPT	1	0135-0088-1000	0135-0152-1000
C	"O" Ring	Viton		1/16 CS x 2-7/8 OD	1	0135-0046-1000	
D	"O" Ring (Option)	Teflon		1/16 CS x 2-7/8 OD	1	0135-0122-1000	
E	Thrust Washer	Ceramic			1	0130-0028-1000	
F	Shaft	Ceramic			1	0130-0024-1000	
G	Impeller	Ryton	Kynar		1	0135-0113-0200	0135-0154-0200
H	Rear Housing	Ryton	Kynar		1	0135-0087-1000	0135-0153-1000
I	Drive Magnet			0.375 Bore	1	0130-0043-0300	
J	Motor Bracket	Plastic			1	0135-0089-0100	
K	Screw	Stainless		#8-32 x 5/8 Lg.	4	0618-0027-1000	
L	Washer	Stainless		#8	4	0135-0016-1000	
M	Motor, TEFC, 115/230V, 50/60Hz				1	0135-0148-1000	

Explosion proof motors are available upon special order.

NOTE: Contact Factory for other materials and/or parts not listed.

**NOTE:**

When attaching the Drive Magnet to the motor shaft, position the face of the Drive Magnet 1/16 inch below the face of the Motor Bracket.

**LIMITED WARRANTY:**

March pumps are guaranteed only against defects in workmanship or materials for a period of one year from date of manufacture pumping water. For the complete warranty and to register online go to [www.marchpump.com/warranty-registration](http://www.marchpump.com/warranty-registration)