



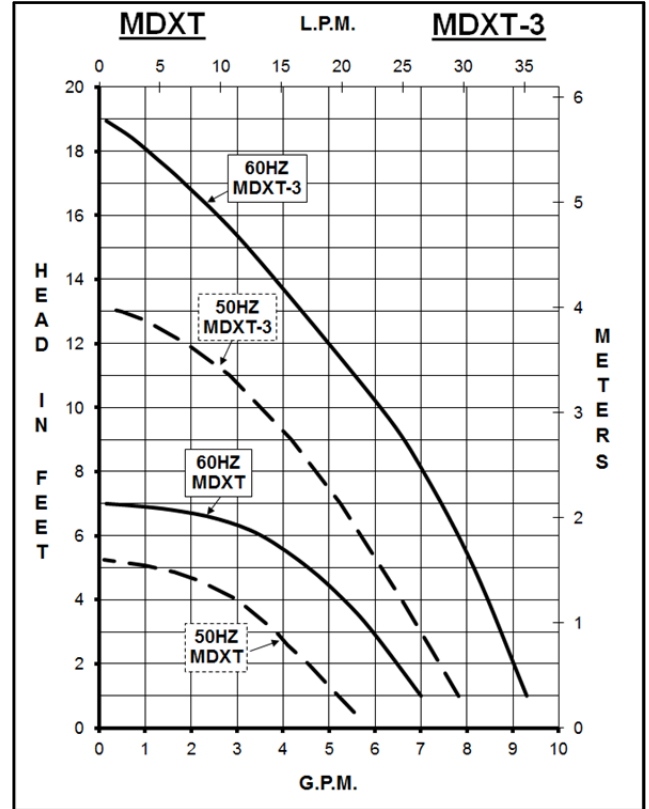
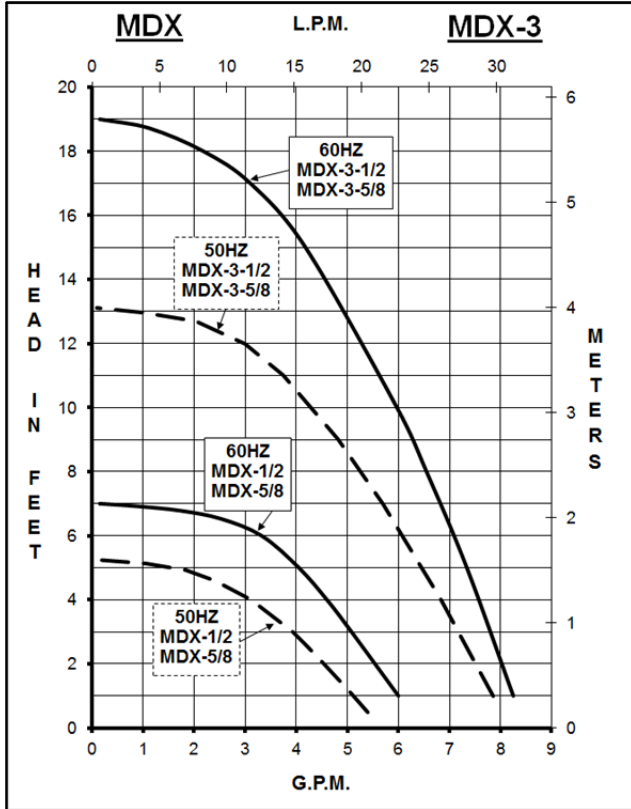
# MARCH PUMPS

1819 PICKWICK AVE., GLENVIEW, IL 60026-1306, U.S.A  
 PHONE: (847) 729-5300 - FAX: (847) 729-7062  
 WWW.MARCHPUMP.COM

**MDX-1/2, MDX-3 1/2**  
**MDX-5/8, MDX-3 5/8**  
**MDXT, MDXT-3**

## DESCRIPTION & OPERATION:

Series MDX are centrifugal magnetic drive pumps, eliminating the need for a shaft seal. Pumps can be serviced with a screwdriver. See the parts list for a breakdown of parts. Pumps are not self-priming, lack a suction lift, and thus require a **flooded suction**. Pumps **cannot be run dry** because the impeller requires the liquid being pumped for lubrication. For application assistance, contact March Pump.

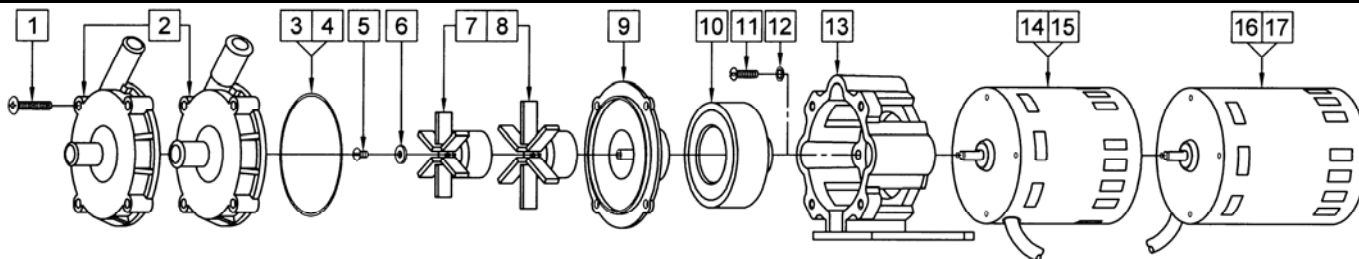


SPECIFICATIONS		MDX-1/2	MDX-5/8	MDX-3-1/2	MDX-3-5/8	MDXT	MDXT-3		
Max Flow	60Hz - 50Hz	6 gpm - 22 lpm			8.5 gpm - 30 lpm		7 gpm - 22 lpm    8.5 gpm - 30 lpm		
Max Head	60Hz - 50Hz	7 ft / 3.0 psi - 1.6 m			19 ft / 8.2 psi - 4 m		7 ft / 3 psi - 1.6 m    19 ft / 8.2 psi - 4 m		
Inlet - Outlet		1/2" OD - 1/2" OD	5/8" OD - 5/8" OD	1/2" OD - 1/2" OD	5/8" OD - 5/8" OD	1/2" FPT - 3/8" FPT			
Max Internal Pressure		50 psi - 3.4 bar							
Max Liquid Temperature		190°F / 87°C							
Overall Pump Dimensions (H x W x L)	115V	Inches: 4.94 x 3.88 x 7.09	Inches: 4.97 x 3.88 x 7.09	Inches: 4.94 x 3.88 x 7.69	Inches: 4.97 x 3.88 x 7.69	Inches: 4.86 x 3.88 x 7.14	Inches: 4.86 x 3.88 x 7.75		
	230V	Inches: 4.94 x 3.88 x 7.34	Inches: 4.97 x 3.88 x 7.34	Inches: 4.94 x 3.88 x 8.11	Inches: 4.97 x 3.88 x 8.11	Inches: 4.86 x 3.88 x 7.39	Inches: 4.86 x 3.88 x 8.17		
Packed Weight	115V	4.50 lbs / 2.04 kg	4.55 lbs / 2.06 kg	5.20 lbs / 2.35 kg	5.20 lbs / 2.35 kg	4.60 lbs / 2.08 kg	5.25 lbs / 2.38 kg		
	230V	5.05 lbs / 2.29 kg	5.05 lbs / 2.29 kg	5.20 lbs / 2.35 kg	5.15 lbs / 2.33 kg	5.20 lbs / 2.35 kg	5.25 lbs / 2.38 kg		
Models		MDX-1/2, MDX-5/8, & MDXT				MDX-3-1/2, MDX-3-5/8, & MDXT-3			
		60Hz - 115V	50Hz - 115V	60Hz - 230V	50Hz - 230V	60Hz - 115V	50Hz - 115V	60Hz - 115V	50Hz - 230V
Motor Type - Rating / Duty		Air Cooled - U.L. listed motor / Continuous				Air Cooled - U.L. listed motor / Continuous			
1Ph	Watts - Amps	59 - 0.94		59 - 0.45    64 - 0.5		115 - 1.55    118 - 1.55		114 - 0.7    120 - 0.7	
	Hp / Kw - Rpm	1/55 - 1750		1/40 - 1750    0.018 - 1300		1/25 - 3450    0.029 - 2850		1/25 - 3450    0.029 - 2850	
Electrical Connection		3 ft (0.9 m) Cord				3 ft (0.9 m) Cord			
MATERIALS IN CONTACT WITH SOLUTION:		MDX: Polypropylene, Ceramic Magnet, Buna N, Kynar/Carbon Filled							
		MDX-3: Polypropylene, Ceramic Magnet, Buna N, Kynar/Carbon Filled, Ryton/Teflon/Carbon, Stainless Steel							
		MDXT: Polypropylene, Ceramic Magnet, Buna N, Ceramic							
		MDXT-3: Polypropylene, Ceramic Magnet, Buna N, Ceramic							

Air cooled motors are available in different electrical configurations such as 115V 60Hz, 115V 50/60Hz, and 230V 50/60Hz, 1 phase.

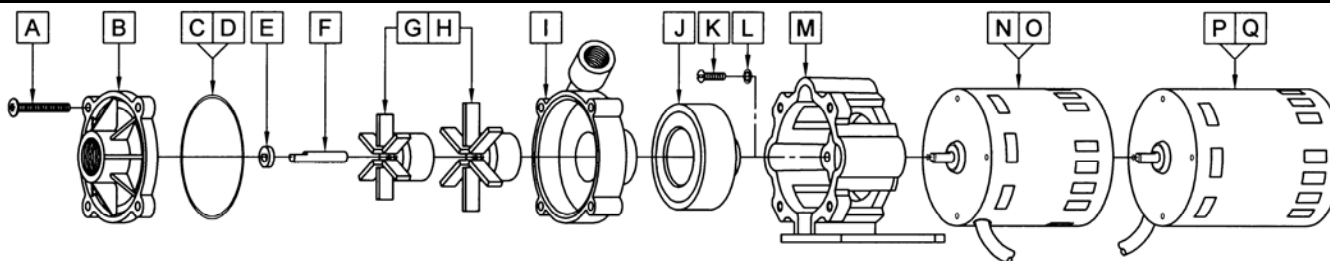
All specifications & data are based on pumping water & are intended as a guideline only. Specifications may vary with different motors.

## PARTS LIST



#	DESCRIPTION	MATERIAL	MDX-1/2	MDX-5/8	QTY.	MDX-1/2	MDX-5/8
1	Screw	Stainless Steel	#10-32 x 1 Lg.		4	0135-0180-1000	
2	Front Housing	Polypropylene	1/2 OD Inlet & Outlet	5/8 OD Inlet & Outlet	1	0135-0118-1000	0135-0117-1000
3	"O" Ring	Buna N	1/16 CS x 3 OD		1	0135-0007-1000	
4	"O" Ring (Option)	Viton	1/16 CS x 3 OD		1	0135-0023-1000	
5	Screw	Stainless Steel	#8-32 x 1/4 Lg.		1	0135-0042-1000	
6	Thrust Washer	Ryton/Teflon/Carbon			1	0802-0057-1000	
7	Impeller w/Ceramic Magnet	Polypropylene	2.625 Dia.		1	0135-0026-0100	
8	Impeller Encapsulated (Option)	Polypropylene	2.625 Dia.		1	0135-0133-0200	
9	Rear Housing	Kynar/Carbon Filled			1	0802-0043-1000	
10	Drive Magnet				1	0135-0126-0100	
11	Screw	Stainless Steel	#8-32 x 5/8 Lg.		4	0618-0027-1000	
12	Lock Washer	Stainless Steel	#8		4	0620-0010-1000	
13	Motor Bracket	Plastic			1	0135-0168-0100	
14	Motor, 1750 RPM, 115V, 60Hz				1	0135-0109-1000	
15	Motor, 1750 RPM, 230V, 50/60Hz				1	0135-0112-1000	

#	DESCRIPTION	MATERIAL	MDX-3-1/2	MDX-3-5/8	QTY.	MDX-3-1/2	MDX-3-5/8
1	Screw	Stainless Steel	#10-32 x 1 Lg.		4	0135-0180-1000	
2	Front Housing	Polypropylene	1/2 OD Inlet & Outlet	5/8 OD Inlet & Outlet	1	0135-0118-1000	0135-0117-1000
3	"O" Ring	Buna N	1/16 CS x 3 OD		1	0135-0007-1000	
4	"O" Ring (Option)	Viton	1/16 CS x 3 OD		1	0135-0023-1000	
5	Screw	Stainless Steel	#8-32 x 1/4 Lg.		1	0135-0042-1000	
6	Thrust Washer	Ryton/Teflon/Carbon			1	0802-0057-1000	
7	Impeller w/Ceramic Magnet	Polypropylene	2.062 Dia.		1	0135-0043-0100	
8	Impeller Encapsulated (Option)	Polypropylene	2.062 Dia.		1	0135-0130-0200	
9	Rear Housing	Kynar/Carbon Filled			1	0802-0043-1000	
10	Drive Magnet				1	0135-0126-0100	
11	Screw	Stainless Steel	#8-32 x 5/8 Lg.		4	0618-0027-1000	
12	Lock Washer	Stainless Steel	#8		4	0620-0010-1000	
13	Motor Bracket	Plastic			1	0135-0168-0100	
17	Motor, 3450 RPM, 115V, 50/60Hz				1	0135-0036-1000	
18	Motor, 3450 RPM, 230V, 50/60Hz				1	0135-0037-1000	



#	DESCRIPTION	MATERIAL	MDXT	MDXT-3	QTY.	MDXT	MDXT-3
A	Screw	Stainless Steel	#10-32 x 1-1/2 Lg.		4	0823-0008-1000	
B	Cover	Polypropylene	1/2 FPT Inlet		1	0135-0172-1000	
C	"O" Ring	Buna N	1/16 CS x 2-7/8 OD		1	0135-0039-1000	
D	"O" Ring (Option)	Viton	1/16 CS x 2-7/8 OD		1	0135-0046-1000	
E	Thrust Washer	Ceramic			1	0130-0028-1000	
F	Shaft	Ceramic			1	0809-0160-1000	
G	Impeller	Polypropylene/Ceramic Magnet	2.625 Dia.	2.062 Dia.	1	0135-0026-0100	0135-0043-0100
H	Impeller Encapsulated (Option)	Polypropylene	2.625 Dia.	2.062 Dia.	1	0135-0133-0200	0135-0130-0200
I	Rear Housing	Polypropylene	3/8 FPT Outlet		1	0135-0171-1000	
J	Drive Magnet				1	0135-0126-0100	
K	Screw	Stainless Steel	#8-32 x 5/8 Lg.		4	0618-0027-1000	
L	Lock Washer	Stainless Steel	#8		4	0620-0010-1000	
M	Motor Bracket	Plastic			1	0135-0168-0100	
N	Motor, 1750 RPM, 115V, 60Hz				1	0135-0109-1000	
O	Motor, 1750 RPM, 230V, 50/60Hz				1	0135-0112-1000	
P	Motor, 3450 RPM, 115V, 50/60Hz				1	0135-0036-1000	
Q	Motor, 3450 RPM, 230V, 50/60Hz				1	0135-0037-1000	

NOTE: Contact Factory for other materials and/or parts not listed.

**0135-0107-1000 R22**

**NOTE:** When attaching the Drive Magnet to the motor shaft, position the face of the Drive Magnet 1/16 inch below the face of the Motor Bracket.

**LIMITED WARRANTY:** March pumps are guaranteed only against defects in workmanship or materials for a period of one year from date of manufacture pumping water. For the complete warranty and to register online go to [www.marchpump.com/warranty-registration](http://www.marchpump.com/warranty-registration)