

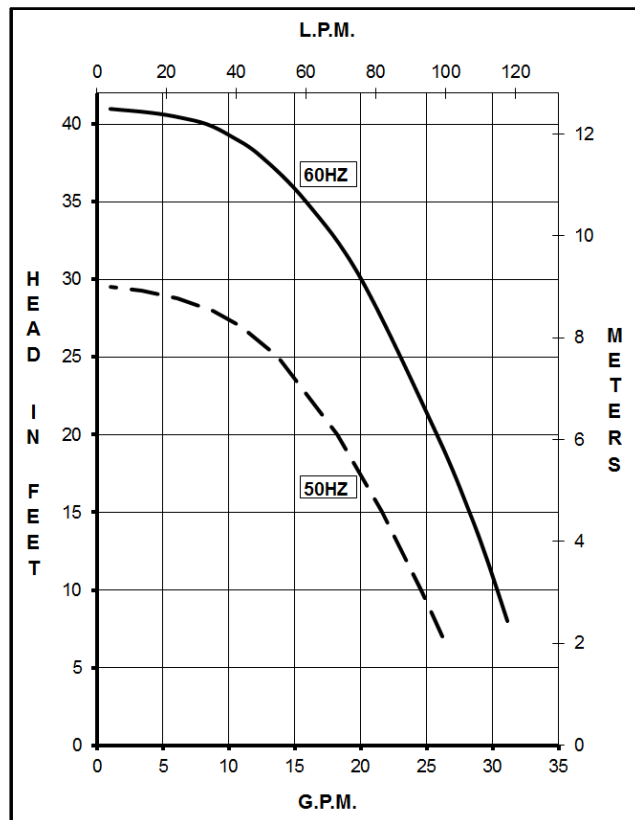


MARCH PUMPS

1819 PICKWICK AVE., GLENVIEW, IL 60026-1306, U.S.A
 PHONE: (847) 729-5300 - FAX: (847) 729-7062
 WWW.MARCHPUMP.COM

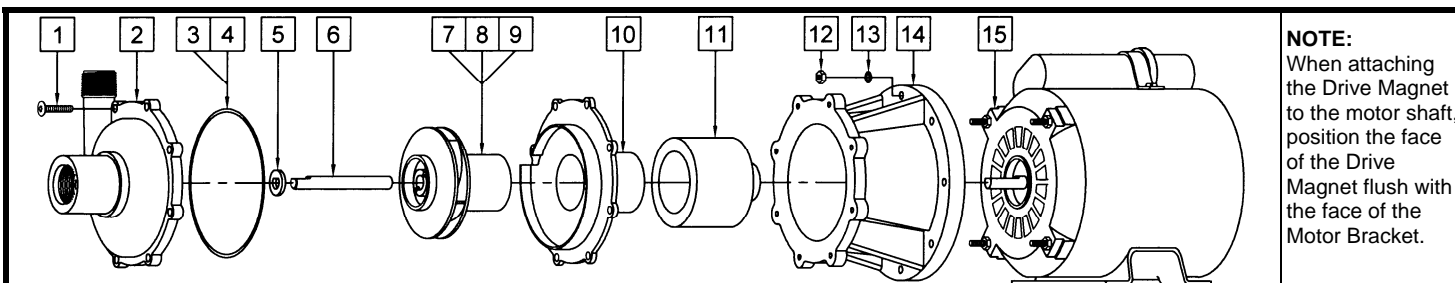
TE-5.5C-MD-AC TE-5.5K-MD-AC

SPECIFICATIONS		TE-5.5C-MD-AC		TE-5.5K-MD-AC			
Model Abbreviations		C: Polypropylene		K: Kynar			
Max Flow		60Hz {30 gpm} - 50Hz {102 lpm}					
Max Head		60Hz {41 ft / 17.7 psi} - 50Hz {9 m}					
Inlet - Outlet		1" FPT - 3/4" MPT					
Max Internal Pressure		50 psi / 3.4 bar		75 psi / 5 bar			
Max Liquid Temperature		190°F / 87°C		200°F / 93°C			
Packed Weight		17.50 lbs / 7.93 kg		18.00 lbs / 8.16 kg			
Models		TE-5.5C-MD-AC & TE-5.5K-MD-AC					
		60Hz - 115V		50Hz - 115V		60Hz - 230V	
Motor Type		AC: Air Cooled					
Rating / Duty		U.L. listed motor / Continuous					
1Ph	Watts - Amps	407 - 2.7	281 - 2.9	407 - 1.4	281 - 1.4		
	Hp / Kw - Rpm	1/5 - 3450	0.149 - 2850	1/5 - 3450	0.149 - 2850		
Electrical Connection		Junction Box					
Overall Pump Size (H x W x L)		6.95" x 5.81" x 12.89" 17.6 cm x 14.7 cm x 32.7 cm					
Materials in contact w/solution		Polypropylene, Viton, Ceramic		Kynar/Carbon Filled, Viton, Ceramic			
All specifications & data are based on pumping water & are intended as a guideline only. Specifications may vary with different motors.							



DESCRIPTION: Series 5.5 are centrifugal magnetic drive pumps, eliminating the need for a shaft seal. Pumps can be serviced with a screwdriver. Screws should be tightened in sequence and uniformly. Do not over tighten the screws or you may crush the plastic housing bosses. See the parts list for a breakdown of parts. Pumps are 115/230V, 1 phase, air-cooled. Explosion proof and special voltage motors are available upon special order.

OPERATION: Pumps are not self-priming, lack a suction lift, and thus require a **flooded suction**. Pumps **cannot be run dry** because the impeller requires the liquid being pumped for lubrication. The direction of motor rotation should be clockwise when facing the inlet of the pump. For liquids with a specific gravity greater than water, have a higher viscosity, or for elevated temperatures, a trimmed impeller may be necessary. For application assistance, contact March Pump.



NOTE: When attaching the Drive Magnet to the motor shaft, position the face of the Drive Magnet flush with the face of the Motor Bracket.

#	DESCRIPTION	TE-5.5C-MD-AC	TE-5.5K-MD-AC	SIZE (Inches)	QTY.	TE-5.5C-MD-AC	TE-5.5K-MD-AC
1	Screw	Stainless		#10-32 x 1 Lg.	8	0135-0180-1000	
2	Front Housing	Polypropylene	Kynar		1	0151-0027-1000	0151-0044-1000
3	"O" Ring	Viton		3/32 CS x 4-7/16 OD	1	0153-0015-1000	
4	"O" Ring (Option)	Viton/Teflon		3/32 CS x 4-7/16 OD	1	0153-0024-1000	
5	Thrust Washer	Ceramic			1	0155-0009-1000	
6	Shaft	Ceramic			1	0153-0007-1000	
7	Impeller	Polypropylene	Kynar		1	0151-0029-0500	0151-0046-0300
8	Impeller w/Carbon Bushing (Option)	Polypropylene	Kynar		1	0151-0029-0800	0151-0046-0500
9	Impeller w/Mica Teflon Bushing (Option)	Polypropylene	Kynar		1	0151-0029-1300	0151-0046-1100
10	Rear Housing w/Ceramic Thrust Washer	Polypropylene	Kynar		1	0151-0028-0100	0151-0045-0100
11	Drive Magnet				1	0151-0061-0200	
12	Hex Nut	Brass		#8-32	1	0410-0039-1000	
13	Lock Washer	Stainless		#8	4	0620-0010-1000	
14	Motor Bracket	Plastic			4	0151-0041-0100	
15	Motor, Air Cooled, 115/230V, 1 Phase, 50/60Hz				1	0175-0087-1000	
W	Wet End Kit	1, 2, 3, 5, 6, 7, 10	1, 2, 3, 5, 6, 7, 10		1	0151-0069-0100	0151-0070-0100

LIMITED WARRANTY: March pumps are guaranteed only against defects in workmanship or materials for a period of one year from date of manufacture pumping water. For the complete warranty and to register online go to www.marchpump.com/warranty-registration

NOTE: Contact Factory for other materials and/or parts not listed.

0151-0026-1100 R3