



# MARCH PUMPS

1819 PICKWICK AVE., GLENVIEW, IL 60026-1306, U.S.A  
 PHONE: (847) 729-5300 - FAX: (847) 729-7062  
 WWW.MARCHPUMP.COM

AC-5C-MD, TE-5C-MD  
 AC-5A-MD, TE-5A-MD  
 TE-5K-MD, TE-5S-MD

## DESCRIPTION:

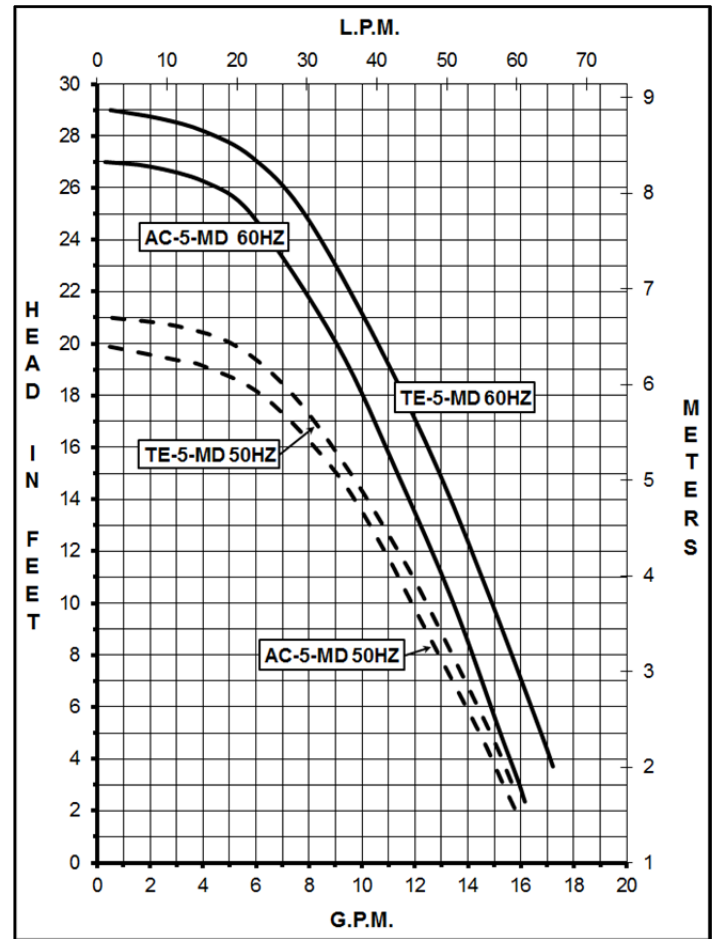
Series 5 are centrifugal magnetic drive pumps, eliminating the need for a shaft seal. All are serviceable with a screwdriver. See the parts list for a breakdown of parts.

## OPERATION:

Pumps are not self-priming, lack a suction lift, and thus require a **flooded suction**. Pumps **cannot be run dry** because the impeller requires the liquid being pumped for lubrication. For liquids with a specific gravity greater than water, have a higher viscosity, or for elevated temperatures, a trimmed impeller may be necessary. For application assistance, contact March Pump.

## LIMITED WARRANTY:

March pumps are guaranteed only against defects in workmanship or materials for a period of one year from date of manufacture pumping water. For the complete warranty and to register online go to [www.marchpump.com/warranty-registration](http://www.marchpump.com/warranty-registration)



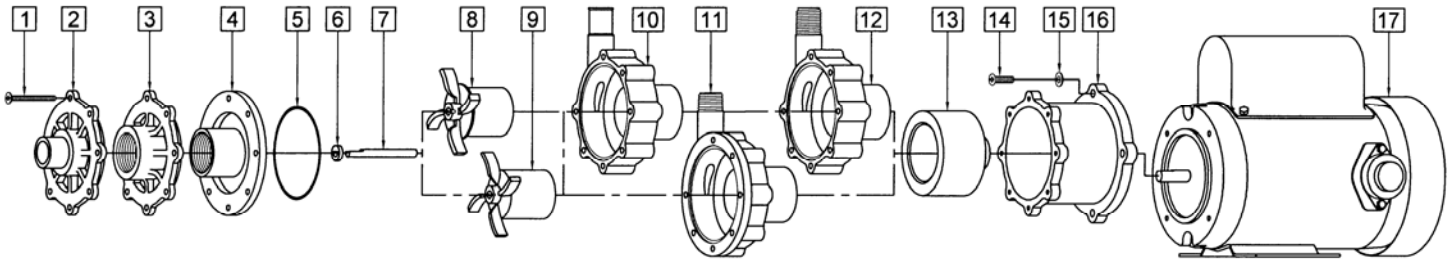
SPECIFICATIONS	AC-5C-MD	AC-5A-MD	TE-5C-MD	TE-5K-MD	TE-5A-MD	TE-5S-MD	
<b>Model Abbreviations</b>	C: Polypropylene Threaded Ports	A: Polypropylene Smooth Ports	C: Polypropylene Threaded Inlet & Outlet Ports	K: Kynar Threaded Inlet & Outlet Ports	A: Polypropylene Smooth Ports	S: Stainless Threaded Ports	
Max Flow	60Hz - 50Hz 17 gpm - 60 lpm		18 gpm - 60.5 lpm				
Max Head	60Hz - 50Hz 27 ft / 11.7 psi - 6 m		29 ft / 12.5 psi - 6.3 m				
Inlet Port	1" FPT		1" FPT		1" OD		
Outlet Port	1/2" MPT		1/2" MPT		3/4" OD		
Max Internal Pressure	50 psi / 3.4 bar		50 psi / 3.4 bar	75 psi / 5.0 bar	50 psi / 3.4 bar	200 psi / 13 bar	
Max Liquid Temperature	190°F / 87°C		190°F / 87°C	200°F / 93°C	190°F / 87°C	250°F / 121°C	
Overall Pump Size (H x W x L)	Inches	6.19 x 4.52 x 9.27	6.19 x 4.52 x 9.83	7.19 x 8.02 x 13		7.19 x 8.02 x 13.56	7.19 x 8.02 x 13.31
	cm	15.7 x 11.4 x 23.5	15.7 x 11.4 x 24.9	18.2 x 20.3 x 33.0		18.2 x 20.3 x 34.4	18.2 x 20.3 x 33.8
Packed Weight	8.55 lbs / 3.87 kg		22.50 lbs / 10.20 kg	22.70 lbs / 10.29 kg	22.50 lbs / 10.20 kg	25.75 lbs / 11.68 kg	
<b>Models</b>	<b>AC-5C-MD &amp; AC-5A-MD</b>		<b>TE-5C-MD, TE-5A-MD, TE-5K-MD, &amp; TE-5S-MD</b>				
<b>Voltage</b>	<b>Separate 115V or 230V</b>		<b>Dual 115V/230V</b>				
	<b>60Hz</b>		<b>60Hz</b>		<b>50Hz</b>		
Motor Type	AC: Air Cooled		TEFC: Totally Enclosed Fan Cooled				
Rating / Duty	U.L. listed motor / Continuous		U.L. listed motor / Continuous				
1Ph	Watts - Amps	(115V) 234 - 2.1	(115V) 214 - 2.1	(115V) 255 - 2.10		(110V) 177 - 2.2	
		(230V) 250 - 1.0	(230V) 223 - 1.0	(230V) 255 - 1.05		(220V) 177 - 1.1	
	Hp / Kw - Rpm	1/8 - 3450	0.093 - 2850		0.2 - 3450		0.149 - 2850
Electrical Connection	3 ft (0.9 m) Cord			Conduit Box			

## MATERIALS IN CONTACT WITH SOLUTION

TE-5C-MD	Polypropylene, Viton, Ceramic	TE-5S-MD	316 Stainless Steel, Viton, Ceramic, Carbon
TE-5A-MD	Polypropylene, Viton, Ceramic	AC-5C-MD	Polypropylene, Ceramic, Buna-N & Ceramic Magnet
TE-5K-MD	Kynar/Carbon Filled, Viton, Ceramic	AC-5A-MD	Polypropylene, Ceramic, Buna-N & Ceramic Magnet

All specifications & data are based on pumping water & are intended as a guideline only. Specifications may vary with different motors.

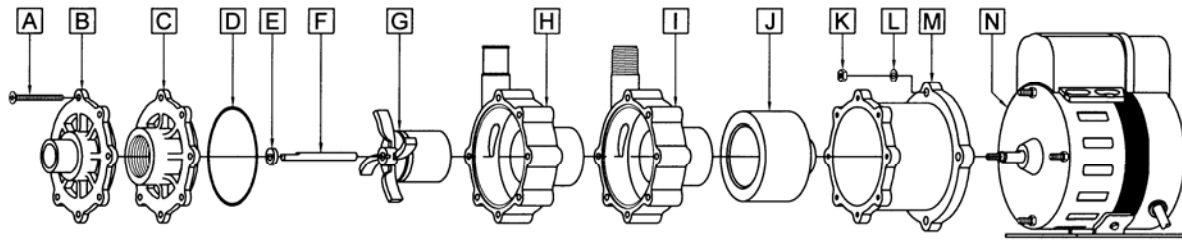
**PARTS LIST**



When attaching the Drive Magnet to motor shaft, position the face of the Drive Magnet 3/32 inch below the face of the Motor Bracket.

#	DESCRIPTION	MATERIAL	SIZE (Inches)	QTY.	TE-5C-MD	TE-5A-MD	TE-5K-MD	TE-5S-MD
1	Screw	Stainless	#8-32 x 1-3/4 Lg.	7			0150-0021-1000	
2	Cover	Polypropylene	1 OD Inlet	1		0150-0150-1000		
3	Cover	Polypropylene	1 FPT Inlet	1	0150-0032-1000			
4	Cover	Kynar	1 FPT Inlet	1			0150-0124-1000	
4	Cover	316 Stainless	1 FPT Inlet	1				0150-0111-0000
5	"O" Ring	Viton	1/16 CS x 3 OD	1			0135-0023-1000	
5	"O" Ring (Option)	Viton/Teflon	0.070 CS x 3-1/8 OD	1			0150-0171-1000	
5	"O" Ring (Option)	Buna N	1/16 CS x 3 OD	1			0135-0007-1000	
6	Thrust Washer	Ceramic		1			0130-0028-1000	
7	Shaft	Ceramic		1			0130-0024-1000	
8	Impeller	Polypropylene		1	0150-0098-0200			
	Impeller (Option)	Polypropylene w/Carbon Bushing		1	0150-0098-0300			
	Impeller (Option)	Polypropylene w/Mica Teflon Bushing		1	0150-0098-0500			
	Impeller	Kynar		1			0150-0125-0200	
	Impeller (Option)	Kynar w/Carbon Bushing		1			0150-0125-0300	
	Impeller (Option)	Kynar w/Mica Teflon Bushing		1			0150-0125-0500	
9	Impeller	316 Stainless w/Carbon Bushing		1				0150-0114-0400
	Impeller (Option)	316 Stainless w/Mica Teflon Bushing		1				0150-0114-0600
<b>NOTE: All Impellers (#'s 8 &amp; 9) are encapsulated and can be used in the TE-5S-MD.</b>								
10	Rear Housing	Polypropylene w/Ceramic Thrust Washer	3/4 OD Outlet	1		0150-0159-0100		
11	Rear Housing	316 Stainless	1/2 MPT Outlet	1				0150-0110-0000
12	Rear Housing	Polypropylene w/Ceramic Thrust Washer	1/2 MPT Outlet	1	0150-0031-0100			
	Rear Housing	Kynar w/Ceramic Thrust Washer	1/2 MPT Outlet	1			0150-0123-0100	
13	Drive Magnet			1			0150-0176-0300	
14	Screw	Stainless	#10-32 x 3/4 Lg.	4			0150-0050-1000	
15	Washer	Stainless	#10	4			0150-0051-1000	
16	Motor Bracket	Plastic		1			0150-0070-0100	
17	Motor, TEFC, 115/230V, 50/60Hz			1			0150-0090-1000	

Explosion proof & special voltage motors are available for TE-5C-MD, TE-5A-MD, TE-5K-MD, & TE-5S-MD upon special order.



#	DESCRIPTION	MATERIAL	SIZE (Inches)	QTY.	AC-5C-MD	AC-5A-MD
A	Screw	Stainless	#8-32 x 1-3/4 Lg.	7		0150-0021-1000
B	Cover	Polypropylene	1 FPT Inlet	1	0150-0032-1000	
C	Cover	Polypropylene	1 OD Inlet	1		0150-0150-1000
D	"O" Ring	Buna N	1/16 CS x 3 OD	1		0135-0007-1000
D	"O" Ring (Option)	Viton	1/16 CS x 3 OD	1		0135-0023-1000
D	"O" Ring (Option)	Viton/Teflon	0.070 CS x 3-1/8 OD	1		0150-0171-1000
E	Thrust Washer	Ceramic		1		0130-0028-1000
F	Shaft	Ceramic		1		0130-0024-1000
G	Impeller	Polypropylene w/Ceramic Magnet		1	0150-0030-0100	
G	Impeller (Option)	Polypropylene w/Ceramic Magnet	Carbon Bushing	1	0150-0030-0700	
G	Impeller (Option)	Polypropylene w/Ceramic Magnet	Mica Teflon Bushing	1	0150-0030-0800	
H	Rear Housing	Polypropylene w/Ceramic Thrust Washer	3/4 OD Outlet	1		0150-0159-0100
I	Rear Housing	Polypropylene w/Ceramic Thrust Washer	1/2 MPT Outlet	1	0150-0031-0100	
J	Drive Magnet			1		0150-0081-0100
K	Nut (Hex)	Stainless	#10-32	4	0625-0024-1000	
L	Washer	Stainless	#10	4	0802-0006-1000	
M	Motor Bracket	Plastic		1		0150-0070-0100
N	Motor, 115V, 50/60Hz			1		0150-0027-1000
	Motor, 230V, 50/60Hz			1		0150-0040-1000

NOTE: Contact Factory for other materials and/or parts not listed.

0150-0060-1000 R24