

4

3

2

1

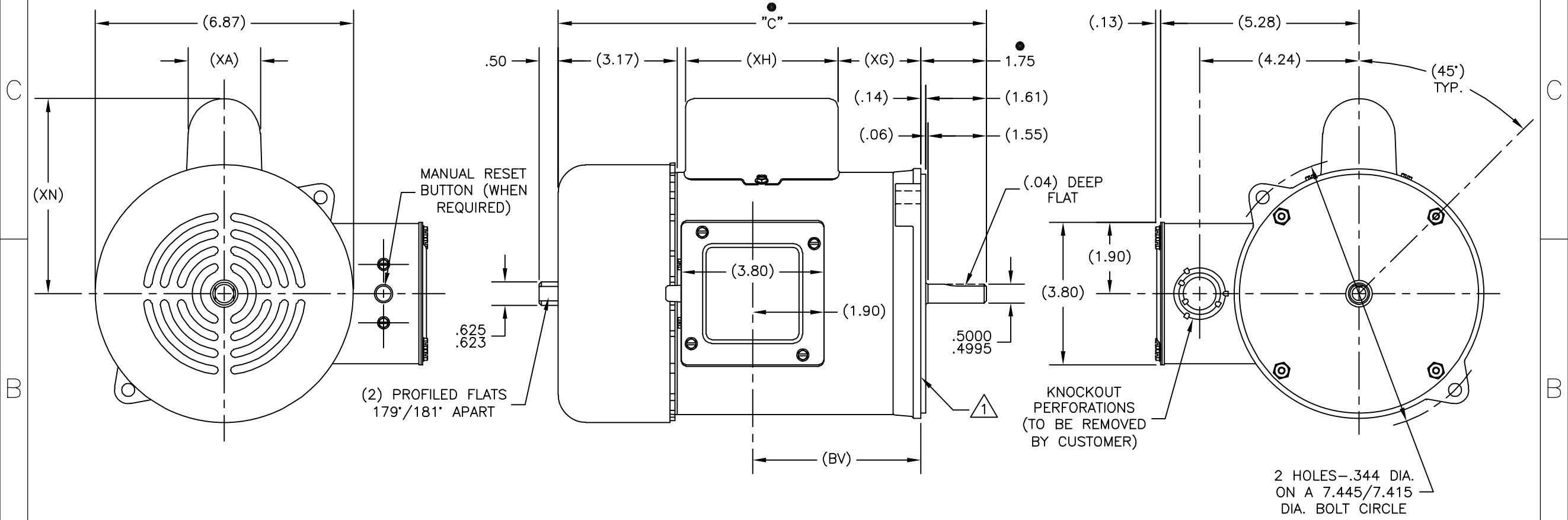
REV	ECO	REV BY	DATE	APPD	DATE
G	0025361	L.HEREDIA	04-12-2012	D.BALDERRAMA	04-12-2012

GROUP	TYPE	FRAME	"C"	(BV)	(XA)	(XG)	(XH)	(XN)
-01	CS	L56N	12.41	4.98	1.64	2.70	4.08	4.87
-02	CS	L56N	12.41	4.98	2.01	2.71	4.06	5.20
-03								

- NOTES:
- FACE OF MOUNTING FLANGE IS PERPENDICULAR TO SHAFT CENTERLINE WITHIN .004 T.I.R.
 - SHAFT RUNOUT NOT TO EXCEED .002 T.I.R.

ALL DIMENSIONS SHOWN IN PARENTHESIS ARE REFERENCE DIMENSIONS. ALL OTHER DIMENSIONS ARE TOLERANCED PER THE FOLLOWING CHART UNLESS OTHERWISE SPECIFIED.

"C" DIM.	= +/- .055
SHAFT EXT.	= +/- .034
LEAD LENGTHS	= +/- 1.00
EXTENDED THRU-BOLTS	= +/- .050
ANGULAR DIMS.	= +/- 2 DEGS.



● = CRITICAL DIMENSION

GEOMETRIC CHARACTERISTICS & SYMBOLS	UNLESS OTHERWISE SPECIFIED DIM. TOLERANCES ARE AS FOLLOWS:
□ FLATNESS	INCH X XX XXX XXXX
- STRAIGHTNESS	INCH ±.1 ±.02 ±.005 ±.0005
∠ ANGULARITY	mm ±0.5 ±0.13 ±0.013
⊥ PERPENDICULARITY (SQUARENESS)	ANG. ±.50 DEG
// PARALLELISM	REMOVE BURRS & BREAK SHARP EDGES:
○ ROUNDNESS (CIRCULARITY)	INCH .003-.015 mm 0.1-0.4
∅ CYLINDRICITY	CORNER FILLETS TO:
△ PROFILE OF ANY SURFACE	INCH .020 mm 0.5
∧ PROFILE OF ANY LINE	MACHINE SURFACES:
↑ RUNOUT	INCH 125 mm 3.2
⊕ TRUE POSITION	METRIC DIMS. SHOWN IN [BRACKETS]
◎ CONCENTRICITY	
= SYMMETRY	

ASME Y14.5M 1994

DR BY:	SVR	03-13-1996
APPD:	SAS	03-19-1996
THIRD ANGLE PROJECTION	EDS DATE	11-11-2011
	FORMAT REV	G

CONFIDENTIAL: THIS DRAWING AND ITS INFORMATION ARE THE EXCLUSIVE AND CONFIDENTIAL PROPERTY OF REGAL-BELOIT CORPORATION AND ARE NOT TO BE DISCLOSED, DUPLICATED, DISTRIBUTED OR OTHERWISE USED WITHOUT THE WRITTEN CONSENT OF REGAL-BELOIT CORPORATION. -ALL RIGHTS RESERVED.

DESCRIPTION	OUTLINE
SIZE C	DWG NO 188037
SCALE NONE	SHEET 1

4

3

2

1

4

3

2

1

REVISION:	ECO	REVISADO POR:	FECHA:	APROBADO POR:	FECHA:
G	0025361	L.HEREDIA	04-12-2012	D.BALDERRAMA	04-12-2012

GROUP	TYPE	FRAME	"C"	(BV)	(XA)	(XG)	(XH)	(XN)
-01	CS	L56N	12.41	4.98	1.64	2.70	4.08	4.87
-02	CS	L56N	12.41	4.98	2.01	2.71	4.06	5.20
-03								

- NOTES:
- FACE OF MOUNTING FLANGE IS PERPENDICULAR TO SHAFT CENTERLINE WITHIN .004 T.I.R.
 - SHAFT RUNOUT NOT TO EXCEED .002 T.I.R.

ALL DIMENSIONS SHOWN IN PARENTHESIS ARE REFERENCE DIMENSIONS. ALL OTHER DIMENSIONS ARE TOLERANCED PER THE FOLLOWING CHART UNLESS OTHERWISE SPECIFIED.

"C" DIM.	= +/- .055
SHAFT EXT.	= +/- .034
LEAD LENGTHS	= +/- 1.00
EXTENDED THRU-BOLTS	= +/- .050
ANGULAR DIMS.	= +/- 2 DEGS.

D

D

C

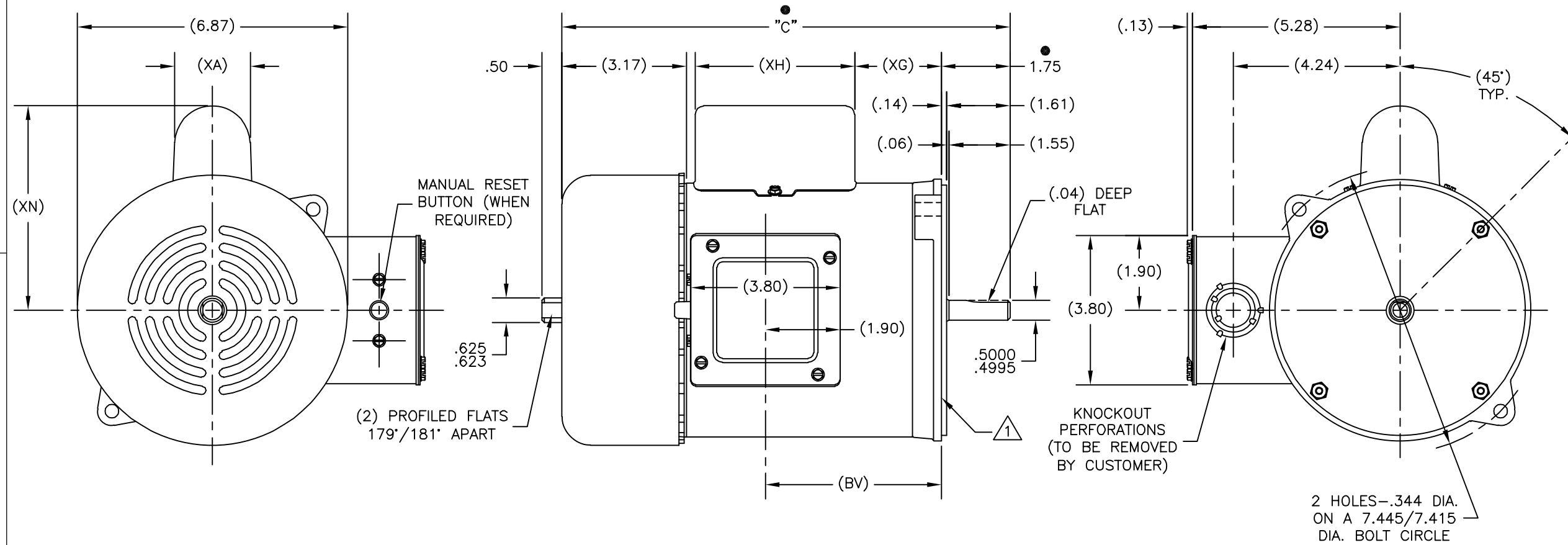
C

B

B

A

A



● = CRITICAL DIMENSION

CARACTERISTICAS DE GEOMETRIA Y SIMBOLOS	A MENOS QUE SE ESPECIFIQUE DE OTRA MANERA, LAS TOLERANCIAS DE LAS DIMS. SON LAS SIGUIENTES:
□ PLANICIDAD	PULG ±.1 ±.02 ±.005 ±.0005
- RECTITUD	mm ±0.5 ±0.13 ±0.013
∠ ANGULARIDAD	ANG. ± 50 GRADOS
⊥ PERPENDICULARIDAD (A ESCUADRA)	ELIMINAR REBABAS Y ORILLAS FILOSAS DEL BORDE.
// PARALELISMO	PULG .003-.015 mm 0.1-0.4
○ REDONDEZ (CIRCULARIDAD)	FILETEAR ESQUINA: PULG .020 mm 0.5
∅ CILINDRICIDAD	MAQUINAR SUPERFICIES
∩ PERFIL DE CUALQUIER SUPERFICIE	PULG 125 mm .32
∧ PERFIL DE CUALQUIER LINEA	DIMS METRICAS MOSTRADAS [PARENTESIS]
↑ VARIACION	
⊕ POSICION REAL	
◎ CONCENTRICIDAD	
= SIMETRIA	

DIBUJADO POR:	SVR	03-13-1996
APROBADO POR:	SAS	03-19-1996
TERCER ANGULO DE PROYECCION	FECHA EDS: 11-11-2011	REV. FORMATO: G
CONFIDENCIAL: ESTE DIBUJO Y SU INFORMACION SON PROPIEDAD DE USO EXCLUSIVO Y CONFIDENCIAL DE REGAL-BELOIT CORPORATION. Y NO DEBERAN SER REVELADOS, DUPLICADOS, DISTRIBUIDOS O USARSE DE OTRA MANERA SIN EL CONSENTIMIENTO ESCRITO DE REGAL-BELOIT CORPORATION. -TODOS LOS DERECHOS RESERVADOS.		

DESCRIPCION:		REGAL-BELOIT CORPORATION	
TAMAÑO: C		NUMERO DE DIBUJO: 188037	
ESCALA: NONE		HOJA: 1	

DESCRIPCION:		REGAL-BELOIT CORPORATION	
TAMAÑO: C		NUMERO DE DIBUJO: 188037	
ESCALA: NONE		HOJA: 1	

4

3

2

1

4

3

2

1

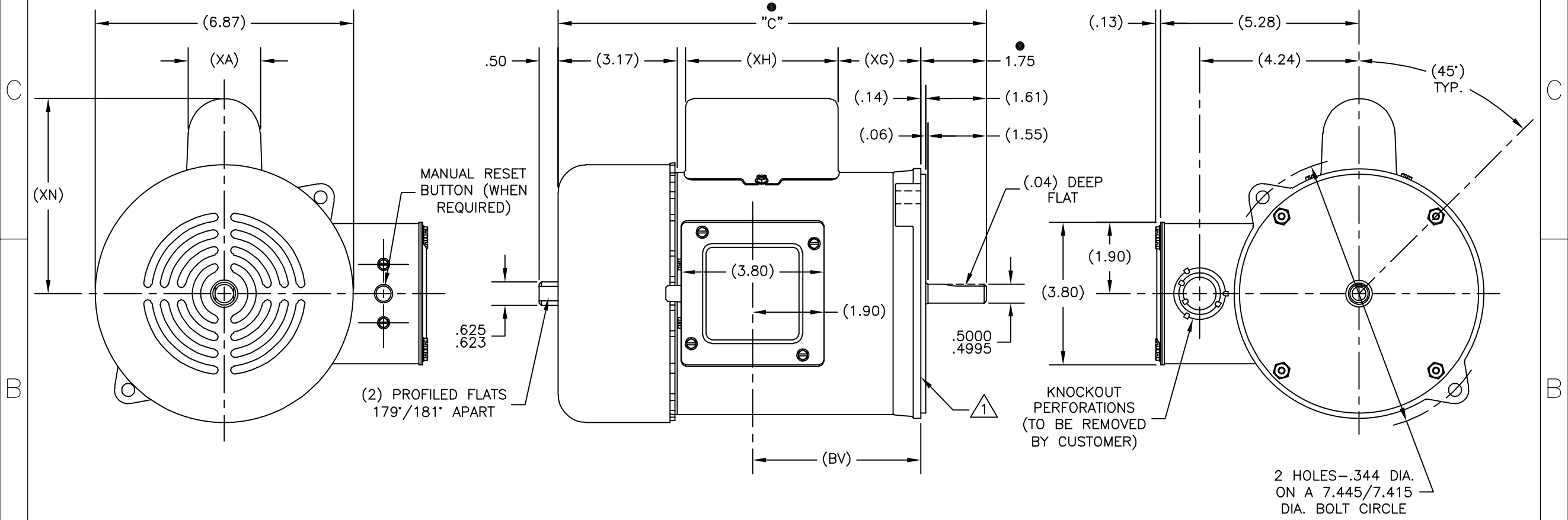
版本	ECO	编制	日期	批准	日期
G	0025361	L.HEREDIA	04-12-2012	D.BALDERRAMA	04-12-2012

GROUP	TYPE	FRAME	"C"	(BV)	(XA)	(XG)	(XH)	(XN)
-01	CS	L56N	12.41	4.98	1.64	2.70	4.08	4.87
-02	CS	L56N	12.41	4.98	2.01	2.71	4.06	5.20
-03								

- NOTES:
- FACE OF MOUNTING FLANGE IS PERPENDICULAR TO SHAFT CENTERLINE WITHIN .004 T.I.R.
 - SHAFT RUNOUT NOT TO EXCEED .002 T.I.R.

ALL DIMENSIONS SHOWN IN PARENTHESIS ARE REFERENCE DIMENSIONS. ALL OTHER DIMENSIONS ARE TOLERANCED PER THE FOLLOWING CHART UNLESS OTHERWISE SPECIFIED.

"C" DIM.	= +/- .055
SHAFT EXT.	= +/- .034
LEAD LENGTHS	= +/- 1.00
EXTENDED THRU-BOLTS	= +/- .050
ANGULAR DIMS.	= +/- 2 DEGS.



● = CRITICAL DIMENSION

形位公差 □ 平面度 — 直线度 ∠ 倾斜度 ⊥ 垂直度 ∥ 平行度 ○ 圆度 ⊘ 圆柱度 △ 面轮廓度 ⌒ 线轮廓度 ↗ 圆跳动 ⊕ 位置度 ⊙ 同轴度 ≡ 对称度	除另有注明 尺寸公差如下: 英寸 X XX XXX XXXX ±.1 ±.02 ±.005 ±.0005 毫米 ±0.5 ±0.13 ±0.013 角度 ±.50 度 清理毛刺和尖棱 英寸 .003-.015 毫米 0.1-0.4 内圆角 英寸 .020 毫米 0.5 表面粗糙度 英制 125 米制 3.2
--	---

ASME Y14.5M 1994

米制尺寸显示在 []

绘图:	SVR	03-13-1996
批准:	SAS	03-19-1996
第三角投影		图纸格式发布日期 11-11-2011 图纸格式版本 G
机密: 本图纸及相关信息所有权归REGAL-BELOIT CORPORATION. 未经REGAL-BELOIT CORPORATION书面授权, 不得泄露、复制、传播或作其他用途。—版权所有		

名称	OUTLINE
图幅	C
图号	188037
比例	NONE
页号	1

4

3

2

1