

GROUP	TYPE	FRAME	"C"	(BS)	(XA)	(XB)	(XG)	(XH)	(XJ)	(XK)	(XM)	(XN)	(XO)	(XP)
-01	CP	P56N	14.51	6.73	2.01	2.01	4.46	4.06	3.46	5.06	3.09	2.89	4.63	4.74
-02														
-03														

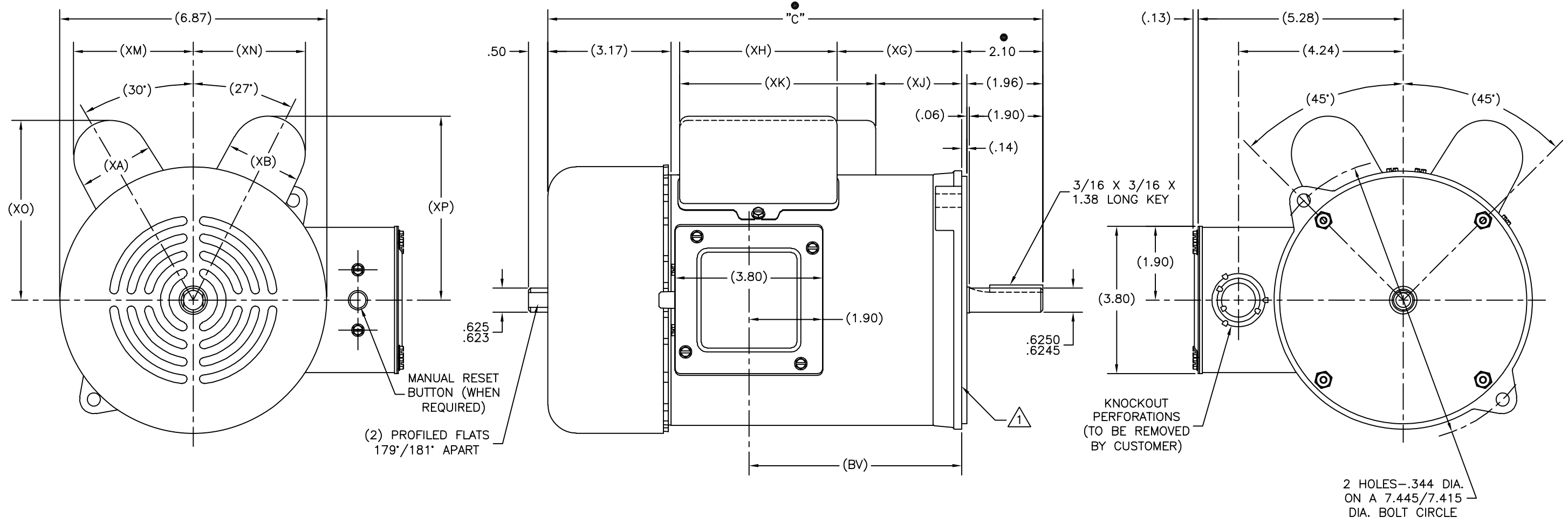
REV	ECO	REV BY	DATE	APPD	DATE
D	0025361	L.HEREDIA	04-12-2012	D.BALDERRAMA	04-12-2012

NOTES:

- FACE OF MOUNTING FLANGE IS PERPENDICULAR TO SHAFT CENTERLINE WITHIN .004 T.I.R.
- SHAFT RUNOUT NOT TO EXCEED .002 T.I.R.

ALL DIMENSIONS SHOWN IN PARENTHESIS ARE REFERENCE DIMENSIONS. ALL OTHER DIMENSIONS ARE TOLERANCED PER THE FOLLOWING CHART UNLESS OTHERWISE SPECIFIED.

"C" DIM.	= +/- .055
SHAFT EXT.	= +/- .034
LEAD LENGTHS	= +/- 1.00
EXTENDED THRU-BOLTS	= +/- .050
ANGULAR DIMS.	= +/- 2 DEGS.



MANUAL RESET BUTTON (WHEN REQUIRED)
(2) PROFILED FLATS 179°/181° APART

KNOCKOUT PERFORATIONS (TO BE REMOVED BY CUSTOMER)

2 HOLES-.344 DIA. ON A 7.445/7.415 DIA. BOLT CIRCLE

● = CRITICAL DIMENSION

GEOMETRIC CHARACTERISTICS & SYMBOLS ▭ FLATNESS — STRAIGHTNESS ∠ ANGULARITY ⊥ PERPENDICULARITY (SQUARENESS) // PARALLELISM R ROUNDNESS (CIRCULARITY) ⌀ CYLINDRICITY ≡ PROFILE OF ANY SURFACE ⤴ PROFILE OF ANY LINE ↗ RUNOUT ⊕ TRUE POSITION ◎ CONCENTRICITY = SYMMETRY	UNLESS OTHERWISE SPECIFIED DIM. TOLERANCES ARE AS FOLLOWS: INCH $\pm .01$ $\pm .02$ $\pm .005$ $\pm .0005$ mm ± 0.25 ± 0.13 ± 0.013 ANG. ± 0.5 DEG REMOVE BURRS & BREAK SHARP EDGES: INCH $\pm .003$ -.015 mm 0.1-0.4 CORNER FILLETS TO: INCH .020 mm 0.5 MACHINE SURFACES: INCH 125 mm 3.2	DR BY: AMB	01-05-1997	REGAL-BELOIT CORPORATION DESCRIPTION: OUTLINE SIZE: D DWG NO: 189148 SCALE: NONE SHEET: 1
		THIRD ANGLE PROJECTION	EDS DATE: 11-11-2011 FORMAT REV: G	

	8	7	6	5	4	3	2	1						
GROUP	TYPE	FRAME	"C"	(BS)	(XA)	(XB)	(XG)	(XH)	(XJ)	(XK)	(XM)	(XN)	(XO)	(XP)
-01	CP	P56N	14.51	6.73	2.01	2.01	4.46	4.06	3.46	5.06	3.09	2.89	4.63	4.74
-02														
-03														

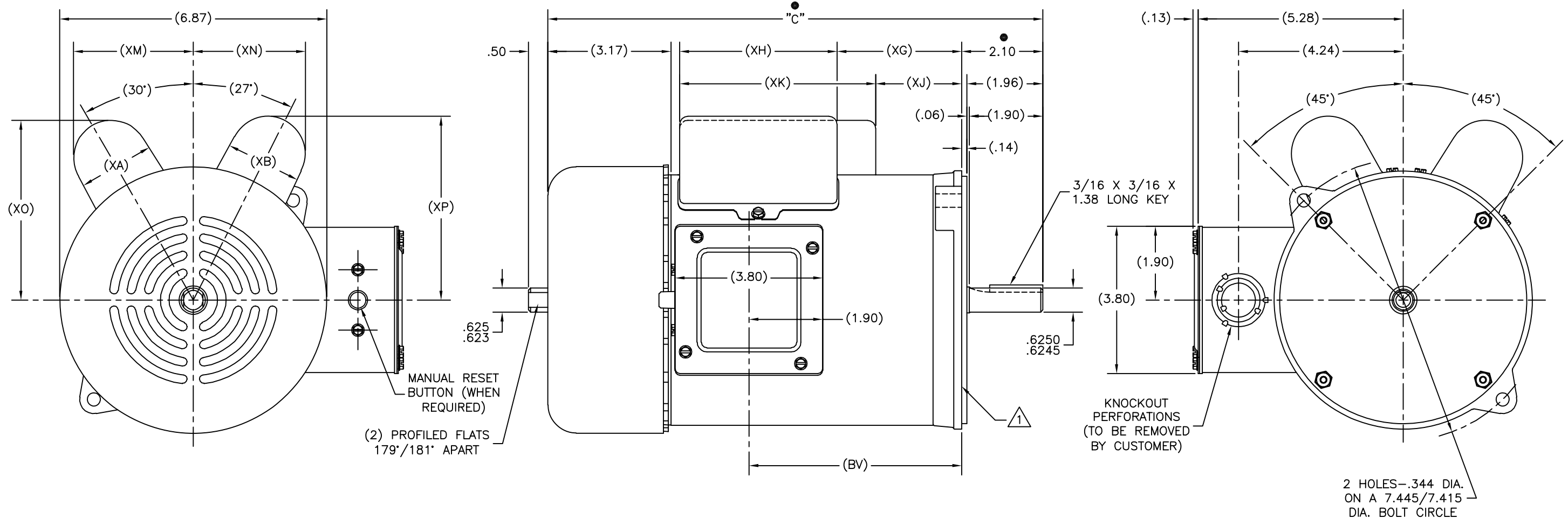
REVISION: ECO	REVISADO POR: L.HEREDIA	FECHA: 04-12-2012	APROBADO POR: D.BALDERRAMA	FECHA: 04-12-2012
D	0025361			

NOTES:

1. FACE OF MOUNTING FLANGE IS PERPENDICULAR TO SHAFT CENTERLINE WITHIN .004 T.I.R.
2. SHAFT RUNOUT NOT TO EXCEED .002 T.I.R.

ALL DIMENSIONS SHOWN IN PARENTHESIS ARE REFERENCE DIMENSIONS. ALL OTHER DIMENSIONS ARE TOLERANCED PER THE FOLLOWING CHART UNLESS OTHERWISE SPECIFIED.

"C" DIM.	= +/- .055
SHAFT EXT.	= +/- .034
LEAD LENGTHS	= +/- 1.00
EXTENDED THRU-BOLTS	= +/- .050
ANGULAR DIMS.	= +/- 2 DEGS.



MANUAL RESET BUTTON (WHEN REQUIRED)
(2) PROFILED FLATS 179°/181° APART

● = CRITICAL DIMENSION

<p>CARACTERÍSTICAS DE GEOMETRÍA Y SIMBOLOS:</p> <ul style="list-style-type: none"> □ PLANICIDAD — RECTITUD ∠ ANGULARIDAD ⊥ PERPENDICULARIDAD (A ESCUADRA) // PARALELISMO ○ REDONDEZ (CIRCULARIDAD) ⊘ CILINDRICIDAD ⊜ PERFIL DE CUALQUIER SUPERFICIE ⌒ PERFIL DE CUALQUIER LINEA ↑ VARIACION ⊕ POSICION REAL ◎ CONCENTRICIDAD ≡ SIMETRIA 	<p>• A MENOS QUE SE ESPECIFIQUE DE OTRA MANERA, LAS TOLERANCIAS DE LAS DIMS; SON LAS SIGUIENTES:</p> <p>PULG ±.1 ±.02 ±.005 ±.0005 mm ±0.5 ±0.13 ±0.013</p> <p>ANG. ±.50 GRADOS</p> <p>ELIMINAR REBABAS Y ORILLAS FILOSAS DEL BORDE.</p> <p>PULG .003-.015 mm 0.1-0.4</p> <p>FILETEAR ESQUINA: PULG .020 mm 0.5</p> <p>MAQUINAR SUPERFICIES</p> <p>PULG 125 mm 3.2</p> <p>DIMS METRICAS MOSTRADAS [PARENTESIS]</p>	<p>DIBUJADO POR: AMB</p> <p>APROBADO POR:</p> <p>TERCER ANGULO DE PROYECCION</p>	<p>01-05-1997</p> <p>FECHA EDS: 11-11-2011</p> <p>REV. FORMATO: G</p>	<p>DESCRIPCION: OUTLINE</p> <p>TAMAÑO: D</p> <p>NUMERO DE DIBUJO: 189148</p> <p>ESCALA: NONE</p> <p>HOJA: 1</p>
---	--	--	---	--



CONFIDENCIAL: ESTE DIBUJO Y SU INFORMACION SON PROPIEDAD DE USO EXCLUSIVO Y CONFIDENCIAL DE REGAL-BELOIT CORPORATION, Y NO DEBERAN SER REVELADOS, DUPLICADOS, DISTRIBUIDOS O USARSE DE OTRA MANERA SIN EL CONSENTIMIENTO ESCRITO DE REGAL-BELOIT CORPORATION. -TODOS LOS DERECHOS RESERVADOS.

GROUP	TYPE	FRAME	"C"	(BS)	(XA)	(XB)	(XG)	(XH)	(XJ)	(XK)	(XM)	(XN)	(XO)	(XP)
-01	CP	P56N	14.51	6.73	2.01	2.01	4.46	4.06	3.46	5.06	3.09	2.89	4.63	4.74
-02														
-03														

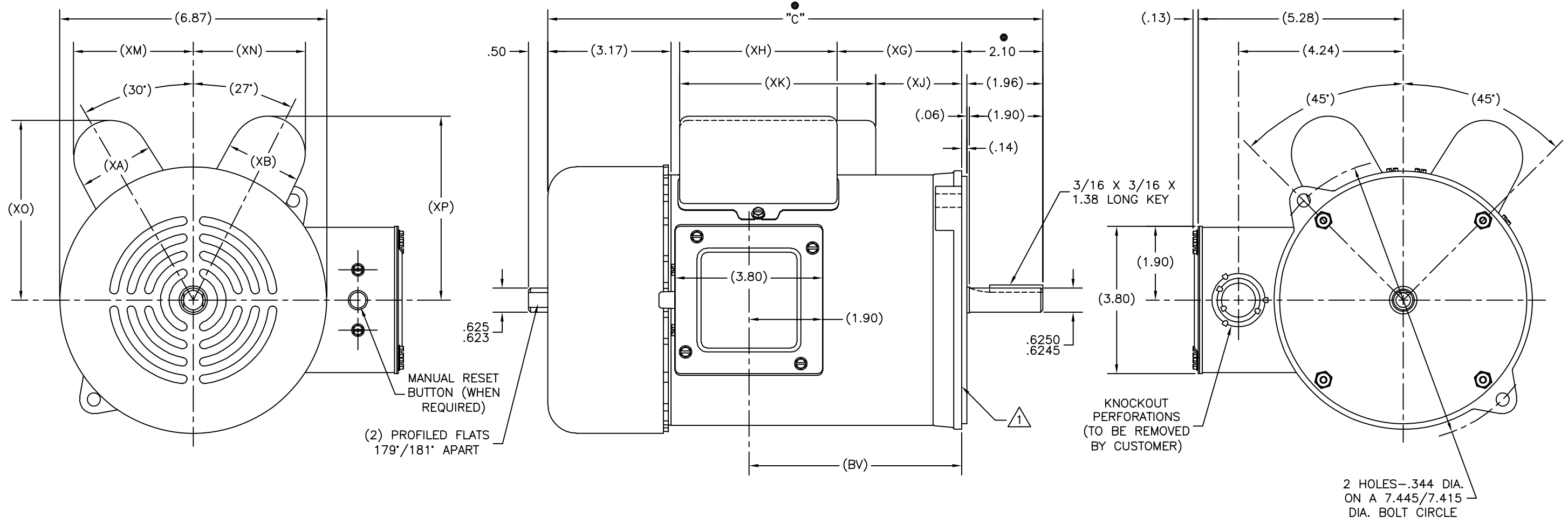
版本	ECO	编制	日期	批准	日期
D	0025361	L.HEREDIA	04-12-2012	D.BALDERRAMA	04-12-2012

NOTES:

- FACE OF MOUNTING FLANGE IS PERPENDICULAR TO SHAFT CENTERLINE WITHIN .004 T.I.R.
- SHAFT RUNOUT NOT TO EXCEED .002 T.I.R.

ALL DIMENSIONS SHOWN IN PARENTHESIS ARE REFERENCE DIMENSIONS. ALL OTHER DIMENSIONS ARE TOLERANCED PER THE FOLLOWING CHART UNLESS OTHERWISE SPECIFIED.

"C" DIM.	= +/- .055
SHAFT EXT.	= +/- .034
LEAD LENGTHS	= +/- 1.00
EXTENDED THRU-BOLTS	= +/- .050
ANGULAR DIMS.	= +/- 2 DEGS.



形位公差 □ 平面度 — 直线度 ∠ 倾斜度 ⊥ 垂直度 // 平行度 ○ 圆度 H 圆柱度 面轮廓度 线轮廓度 ↗ 圆跳动 ⊕ 位置度 ⊙ 同轴度 = 对称度	除另有注明 尺寸公差如下: 英寸 X XX XXX XXXX ±.1 ±.02 ±.005 ±.0005 毫米 ±0.5 ±0.13 ±0.013 角度 ±.50 度 清理毛刺和尖棱 英寸 .003-.015 毫米 0.1-0.4 内圆角 英寸 .020 毫米 0.5 表面粗糙度 英制 125 米制 3.2 米制尺寸显示在 []	绘图: AMB 批准: 01-05-1997 第三角投影	图名: OUTLINE 图号: 189148 比例: NONE
		图密: 本图纸及相关信息所有权归REGAL-BELOIT CORPORATION 未经REGAL-BELOIT CORPORATION书面授权, 不得泄露、 复制、传播或作其他用途。—版权所有	图幅: D 图号: 189148 比例: NONE

● = CRITICAL DIMENSION



OUTLINE

图幅	D	图号	189148	页号	1
比例	NONE				