

PRODUCT INFORMATION PACKET



Model No: P6C17FZ27K
Catalog No: 112615.00
1HP..1725RPM.56.TEFC./V.1PH.60HZ.CONT.MANUAL.40C.1.0SF.ROUND.AG - FEED-
AUGER.P6C17FZ27K
Auger Drive



Regal and Leeson are trademarks of Regal Beloit Corporation or one of its affiliated companies.

©2018 Regal Beloit Corporation, All Rights Reserved. MC017097E



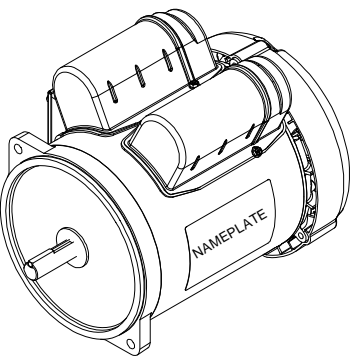
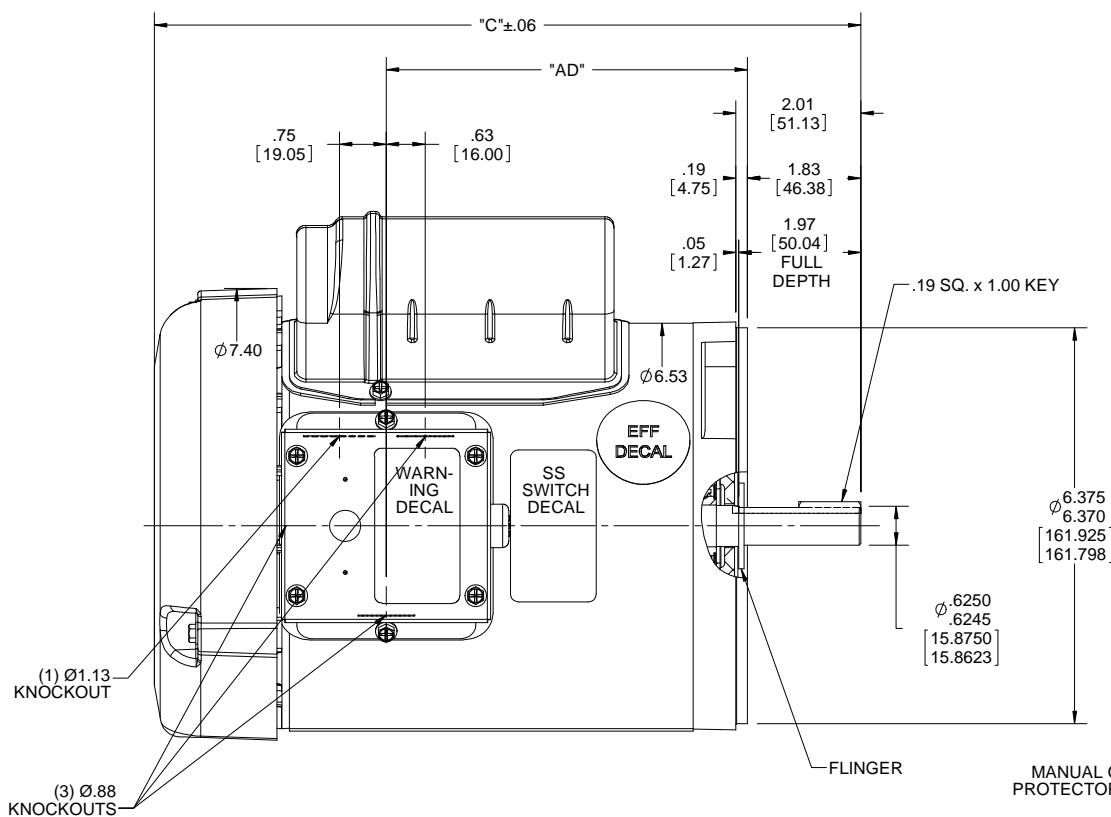


Nameplate Specifications

Output HP	1 Hp	Output KW	0.75 kW
Frequency	60 Hz	Voltage	115/230 V
Current	14/7 A	Speed	1725 rpm
Service Factor	1	Phase	1
Efficiency	74 %	Duty	CONTINUOUS
Insulation Class	F	Design Code	N
KVA Code	K	Frame	56
Enclosure	TEFC	Overload Protector	MANUAL
Ambient Temperature	40 °C	Drive End Bearing Size	6203
Opp Drive End Bearing Size	6203	UL	Recognized
CSA	Y	CE	N
IP Code	54		

Technical Specifications

Electrical Type	CAP START IND RUN	Starting Method	ACROSS THE LINE
Poles	4	Rotation	SELECTIVE CCW
Mounting	ROUND	Motor Orientation	HORIZONTAL
Drive End Bearing	BALL	Opp Drive End Bearing	BALL
Frame Material	ROLLED STEEL	Shaft Type	STANDARD 56
Overall Length	11.27 in	Frame Length	6.5 in
Shaft Diameter	0.63 in	Shaft Extension	1.88 in
Assembly/Box Mounting	F1 ONLY		
Outline Drawing	028817-650	Connection Diagram	5242.02



DASH NO.	"C"	"AD"	CAP DASH	"XO"
650	11.27	5.81	A	1.15
700	11.77	6.31	A	1.15
750	12.27	6.81	B	1.60
800	12.77	7.31	B	1.60
850	13.27	7.81	C	1.82

NOTE:
1) GASKETS THROUGHOUT

ORACLE REV.
002

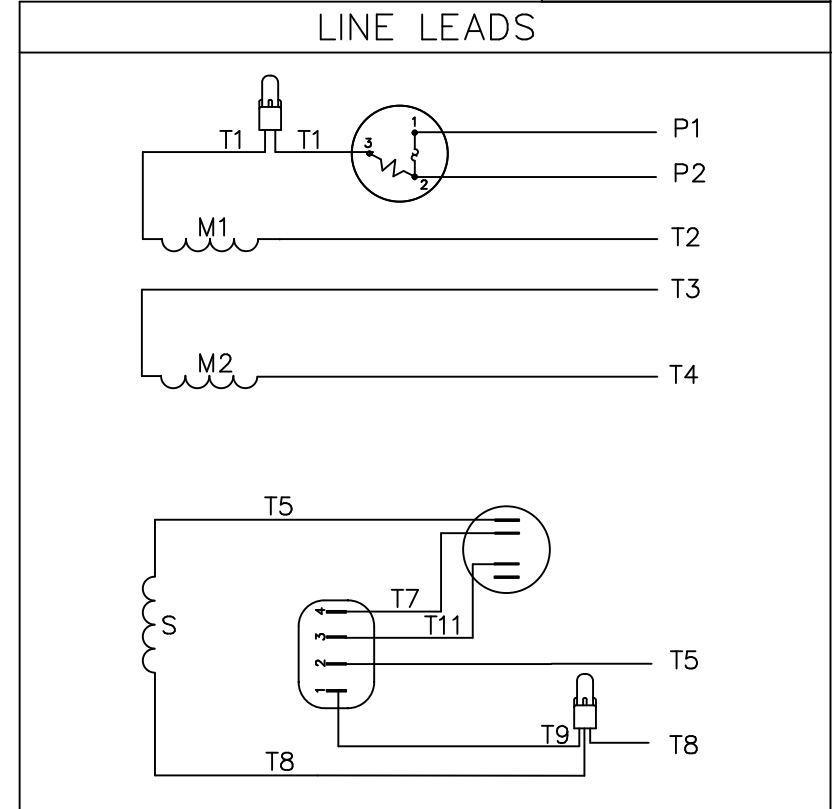
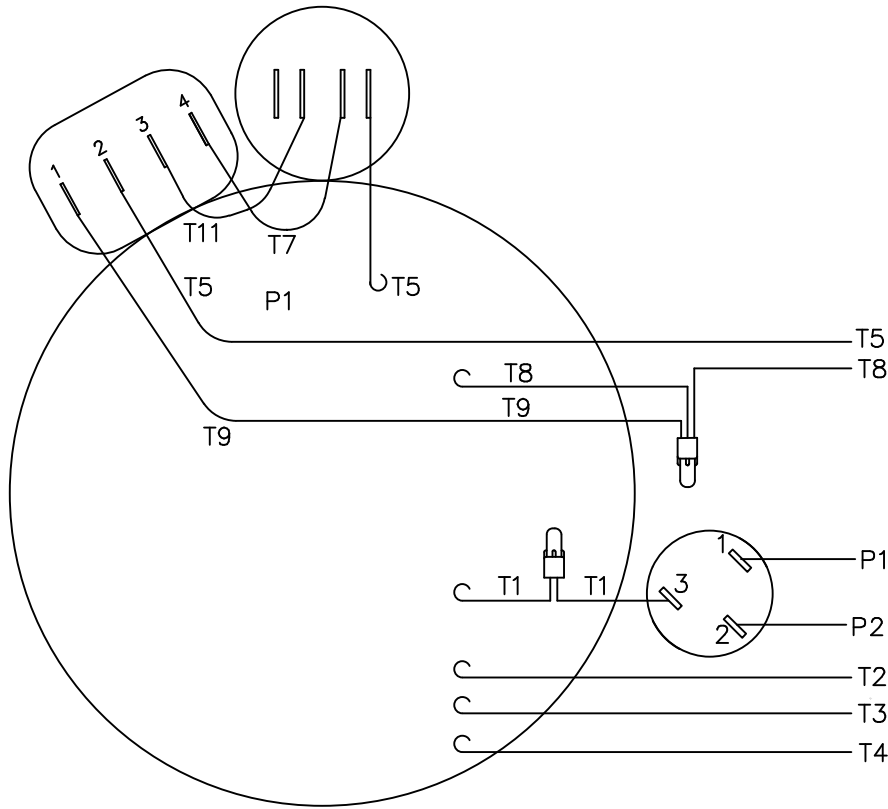
DRAWING REVISION C	REVISION BY DS	DATE 02/21/2018
ECO ECO-0140221	APPROVED BY AS	DATE 02/21/2018
ECO DESCRIPTION		
ITEM # 650 ADDED		
<small>COPYRIGHT REGAL BELOIT AMERICA, INC. ALL RIGHTS RESERVED. PROPRIETARY AND CONFIDENTIAL INFORMATION - THIS DOCUMENT IS THE PROPERTY OF REGAL BELOIT AMERICA, INC. ("OWNER") AND CONTAINS OWNER'S PROPRIETARY INFORMATION. ANY PERSON, CORPORATION OR OTHER FIRM RECEIVING IT IS DEEMED, BY RECEIVING IT, TO AGREE THAT IT, AND/OR ANY PART OF IT, SHALL NOT BE DISCLOSED TO ANY PERSON, CORPORATION OR OTHER ENTITY, DUPLICATED, AND/OR USED, EXCEPT AS EXPRESSLY APPROVED IN WRITING IN ADVANCE BY OWNER. THIS DOCUMENT SHALL BE RETURNED TO OWNER UPON REQUEST. IT MAY BE SUBJECT TO CERTAIN RESTRICTIONS UNDER APPLICABLE EXPORT CONTROL LAWS AND REGULATIONS.</small>		

TOLERANCES UNLESS OTHERWISE SPECIFIED:			
DEC.	INCH	mm	ANGLE
-X	±0.1	[±2.5]	±0.5°
.XX	±0.01	[±0.25]	
.XXX	±0.005	[±0.127]	
.XXXX	±0.0005	[±0.0127]	
REMOVE BURRS & BREAK SHARP			
EDGES: .003/.015 [0.076/.381] X 45°			
CORNER FILLETS: R.02 [51]			
MACHINED SURFACES: 125/3.2			
mm SHOWN IN [BRACKETS]			

DRAWN BY JJK 03/28/08	Regal Beloit America, Inc.	
DATE	DESCRIPTION	
APPROVED BY	OUTLINE	
DATE	TEFC - OIL BURNER FLANGE	
REFERENCE	MATERIAL	PROCESS/FINISH
THIRD ANGLE PROJECTION	SIZE B	DRAWING NUMBER 028817
		SHEET 1 OF 1

VIEW FROM OUTSIDE OF MOTOR AT SWITCH END.

005242-02



	ROTATION FACING LEAD END	L1	L2	JOIN	INSULATE SEPARATELY
HIGH VOLT	C.C.W.	P1	T4 T5	T2 T3, T8	P2
	C.W.	P1	T4 T8	T2 T3, T5	P2
LOW VOLT	C.C.W.	P1	T2, T4 T5	P2 T3, T8	--
	C.W.	P1	T2, T4 T8	P2 T3, T5	--

			TOLERANCES UNLESS OTHERWISE SPECIFIED			LEESON ELECTRIC CORPORATION			
			DEC.	INCHES	METRIC				
05	REMOVED OPTIONAL PRESSURE CONNECTOR	ARV 2/25/08	.X	±	±	DRAWN PG 10/27/86	TITLE EXTERNAL WIRING DIAGRAM TYPE "C" W/ PROTECTOR		
04	REVISED TO OPTIONAL PRESSURE CONNECTOR	PG 9/14/01	.XX	±	±	APPR.			
03	UPDATED TO CURRENT STANDARDS	DBT 8/13/97	.XXX	±	±	R.F.P.	MAT'L. DECAL - 004011 SOLID STATE SWITCH		
NO.	REVISION	BY & DATE	CH'K'D.	.XXXX	±	SCALE 1=1			
THIS DRAWING IN DESIGN AND DETAIL IS OUR PROPERTY AND MUST NOT BE USED EXCEPT IN CONNECTION WITH OUR WORK ALL RIGHTS OF DESIGN AND INVENTION ARE RESERVED THIS IS AN ELECTRONICALLY GENERATED DOCUMENT - DO NOT SCALE THIS PRINT			FRACTIONS	±		REF. PAGE 1	FINISH KANSAS	REV. 05	DRAWING NO. 005242-02
			ANGLES	±		FMF 101120	STANDARD		