

PRODUCT INFORMATION PACKET



Model No: C184K17FC6D

Catalog No: 131540.00

.5HP..1740RPM.184TC.TEFC./230V.1PH.60HZ.CONT.40C.1.0SF.C FACE.C184K17FC6D.....GENERAL PURPOSE.NOT.....

Totally Enclosed Fan Cooled (TEFC)



Regal and Leeson are trademarks of Regal Beloit Corporation or one of its affiliated companies.

©2018 Regal Beloit Corporation, All Rights Reserved. MC017097E





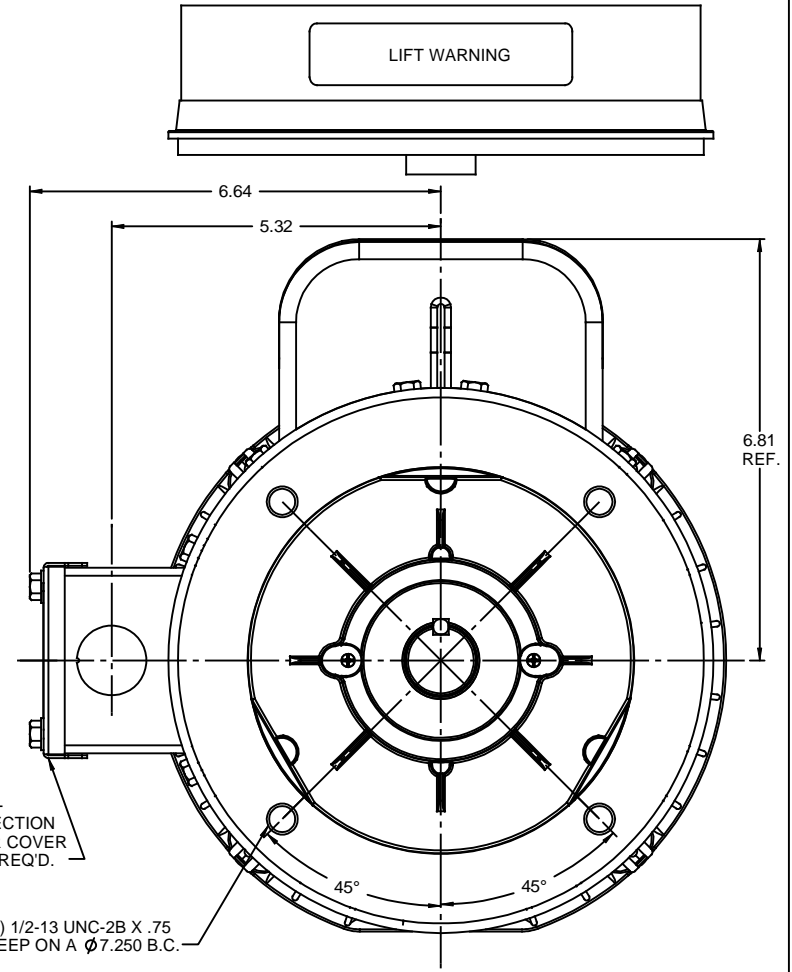
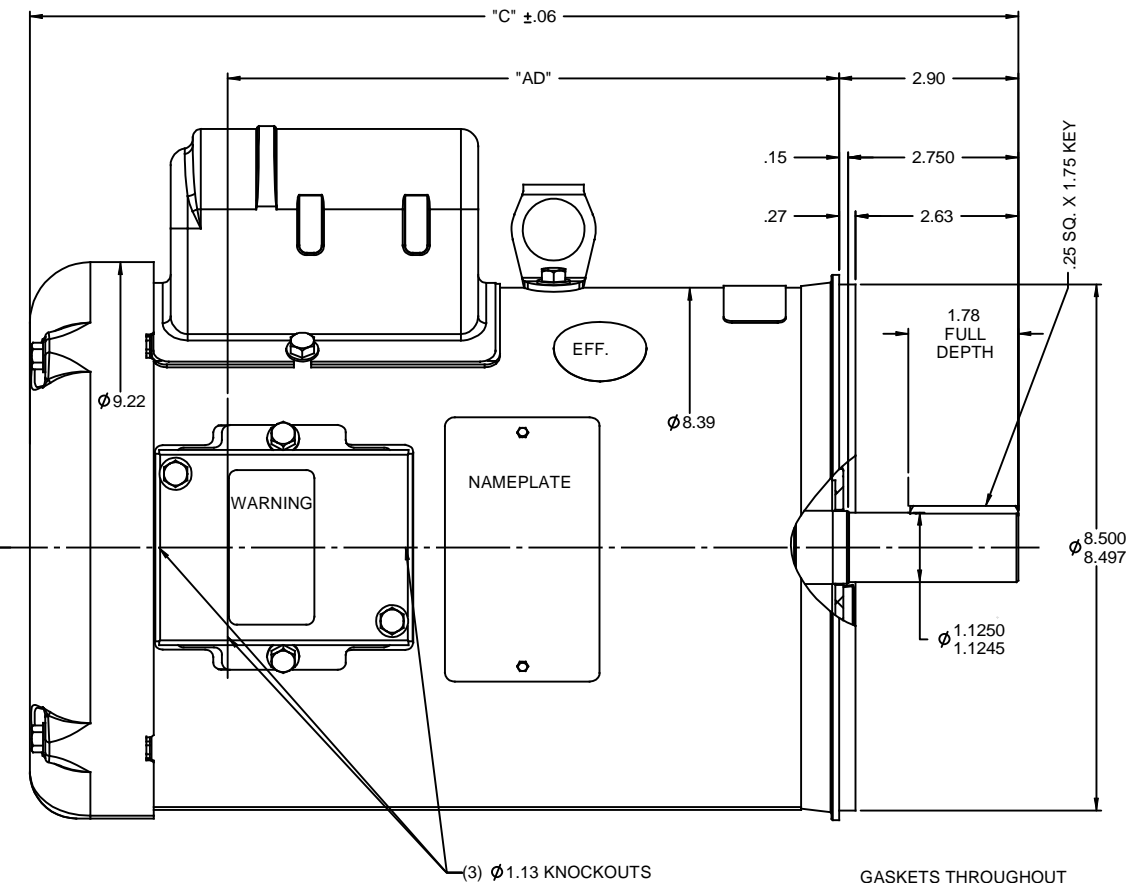
Nameplate Specifications

Output HP	5 Hp	Output KW	3.7 kW
Frequency	60 Hz	Voltage	230 V
Current	23.0 A	Speed	1740 rpm
Service Factor	1	Phase	1
Efficiency	81 %	Duty	Continuous
Insulation Class	F	Design Code	L
KVA Code	H	Frame	184TC
Enclosure	Totally Enclosed Fan Cooled	Overload Protector	No
Ambient Temperature	40 °C	Drive End Bearing Size	6206
Opp Drive End Bearing Size	6205	UL	Recognized
CSA	Y	CE	N
IP Code	43		

Technical Specifications

Electrical Type	Capacitor Start Capacitor Run	Starting Method	Across The Line
Poles	4	Rotation	Selective Counterclockwise
Mounting	Round	Motor Orientation	HORIZONTAL
Drive End Bearing	BALL	Opp Drive End Bearing	BALL
Frame Material	Rolled Steel	Shaft Type	T
Overall Length	17.47 in	Frame Length	12.00 in
Shaft Diameter	1.125 in	Shaft Extension	2.63 in
Assembly/Box Mounting	F1 ONLY		
Outline Drawing	035746-1200	Connection Diagram	005018.01

RBC PROPRIETARY AND CONFIDENTIAL INFORMATION
 This document is the property of REGAL BELOIT CORPORATION ("RBC") including its subsidiaries and divisions and contains proprietary information of RBC. This document is loaned on the express condition that neither it nor the information contained therein shall be disclosed to others without the express written consent of RBC, and that the information shall be used by the recipient only as approved expressly by RBC. This document shall be returned to RBC upon its request. This document may be subject to certain restrictions under U.S. export control laws and regulations.

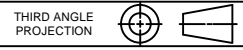


DASH NO.	"C"	"AD"
800	13.47	7.38
850	13.97	7.88
900	14.47	8.38
950	14.97	8.88
1000	15.47	9.38
1050	15.97	9.88
1100	16.47	10.38
1150	16.97	10.88
1200	17.47	11.38

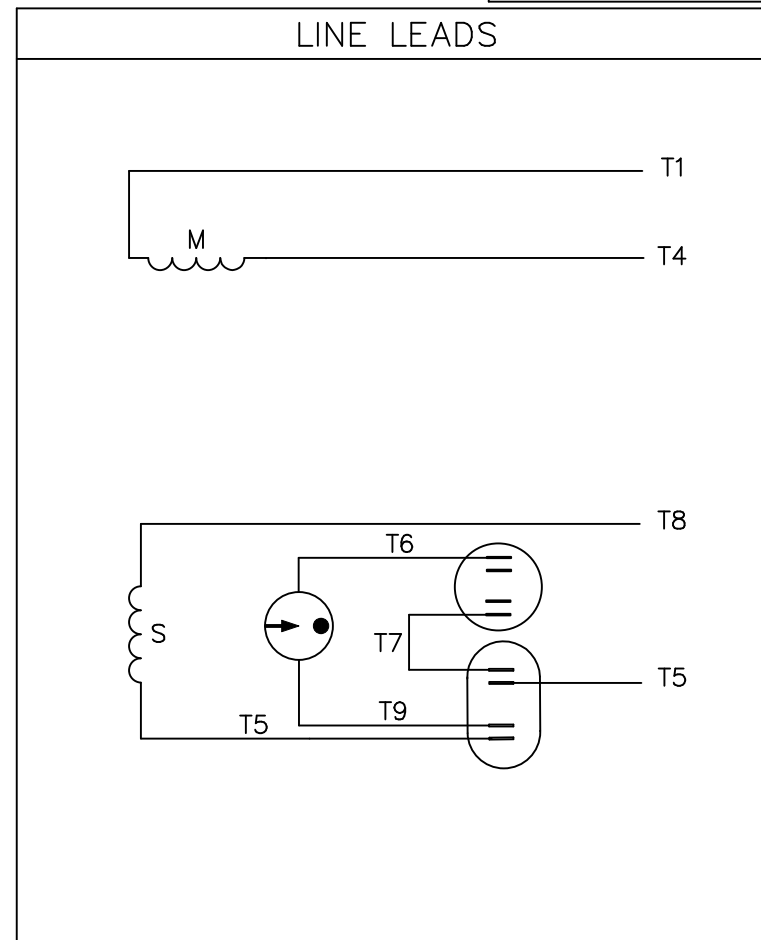
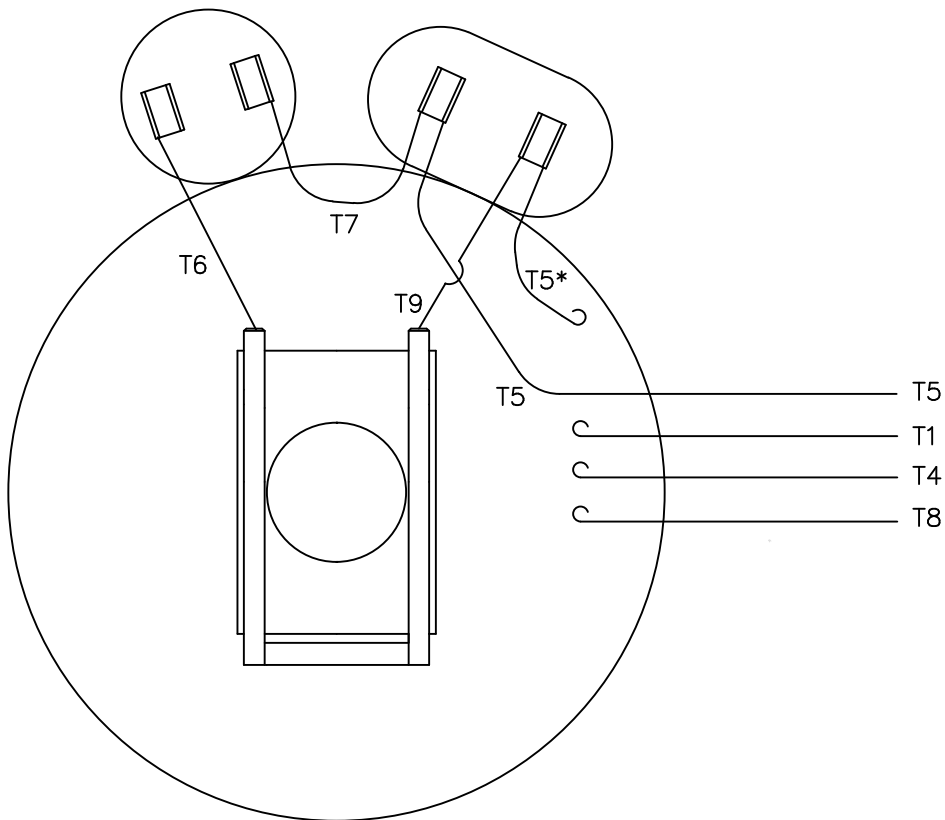
GASKETS THROUGHOUT
 MAXIMUM FACE RUNOUT TO BE .004 T.I.R.
 MAXIMUM PILOT ECCENTRICITY TO BE .004 T.I.R.
 PERMISSIBLE SHAFT RUNOUT TO BE .002 T.I.R.

NO.		REVISION	BY & DATE	CHK	ANG	FINISH	SIZE	DRAWING NO	REV
				RFP		PREV	B	035746	

TOLERANCES UNLESS SPECIFIED		DRAWN LST 1/9/10	
DEC	INCHES	CHK	
X	±.1	APPR	
.XX	±.03	SCALE	1:2
.XXX	±.005	REF	
.XXX	±.0005	FMF	
TITLE		PAGE	
OUTLINE - 184TC FRAME		OF	
TEFC - "C" FACE			
MAT'L			
FINISH			
NETWORK FILE NAME			



VIEW FROM OUTSIDE OF MOTOR AT SWITCH END.



ROTATION FACING LEAD END	L1	L2
C.C.W.	T1,T8	T4,T5
C.W.	T1,T5	T4,T8

* THIS LEAD MAY BE WHITE

NO.	REVISION	BY & DATE	CHK	TOLERANCES UNLESS SPECIFIED	
				DEC.	INCHES
				.X	±.1
20	ALTERNATE T5 LEAD MARKING WAS RED	RLW 7/22/02	KH	.XX	±.01
19	ADDED ALTERNATE T5 LEAD MARKING	RLW 5/31/02	KH	.XXX	±.005
18	REDRAWN ON CAD	DBT 06/24/97		.XXXX	±.0005
				ANG	±1/2°



ELECTRIC MOTORS
GEARMOTORS
AND DRIVES

DRAWN	ADH 02/19/74
CHK	WRK 02/20/74
APPD	JCW 02/20/74
SCALE	1=1
REF	
FMF	
PREV	

TITLE	EXTERNAL WIRING DIAGRAM TYPE "K" W/O PROTECTOR
MAT'L.	DECAL - 004018
FINISH	

THIS DRAWING IN DESIGN AND DETAIL IS OUR PROPERTY AND MUST NOT BE USED EXCEPT IN CONNECTION WITH OUR WORK ALL RIGHTS OF DESIGN AND INVENTION ARE RESERVED THIS IS AN ELECTRONICALLY GENERATED DOCUMENT - DO NOT SCALE THIS PRINT	RFP	CAD FILE	00501801	SIZE	DRAWING NO.	REV.
	DIST	BRF-NLV		A	005018-01	20

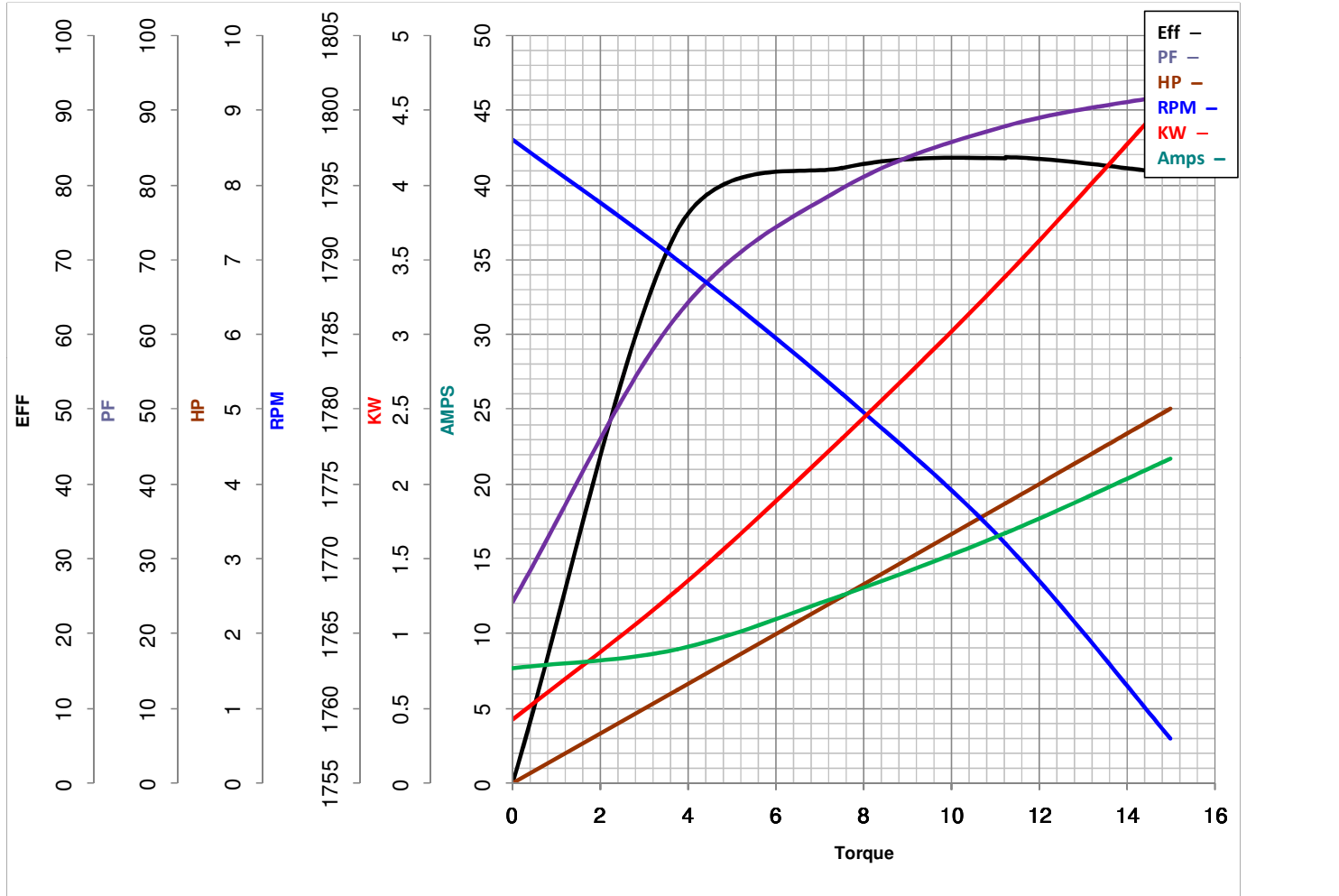


LEESON ELECTRIC CORPORATION
TYPICAL PERFORMANCE CURVE for AC MOTOR

Model No 131540.00

Catalog No 131540.00

Curve at 230 Volts HP 5.00 PHASE 1
60 HZ
5 HP VOLTS 230
HZ 60 RPM 1740



Torque in Lb.Ft

FL TORQUE 15 Lb.Ft
 BD TORQUE 35.3 Lb.Ft
 LR TORQUE 46.5 Lb.Ft

FL AMPS 23
 PU TORQUE 30.5 Lb.Ft
 LR AMPS 149

WINDING K843-2

Date 4/19/2018