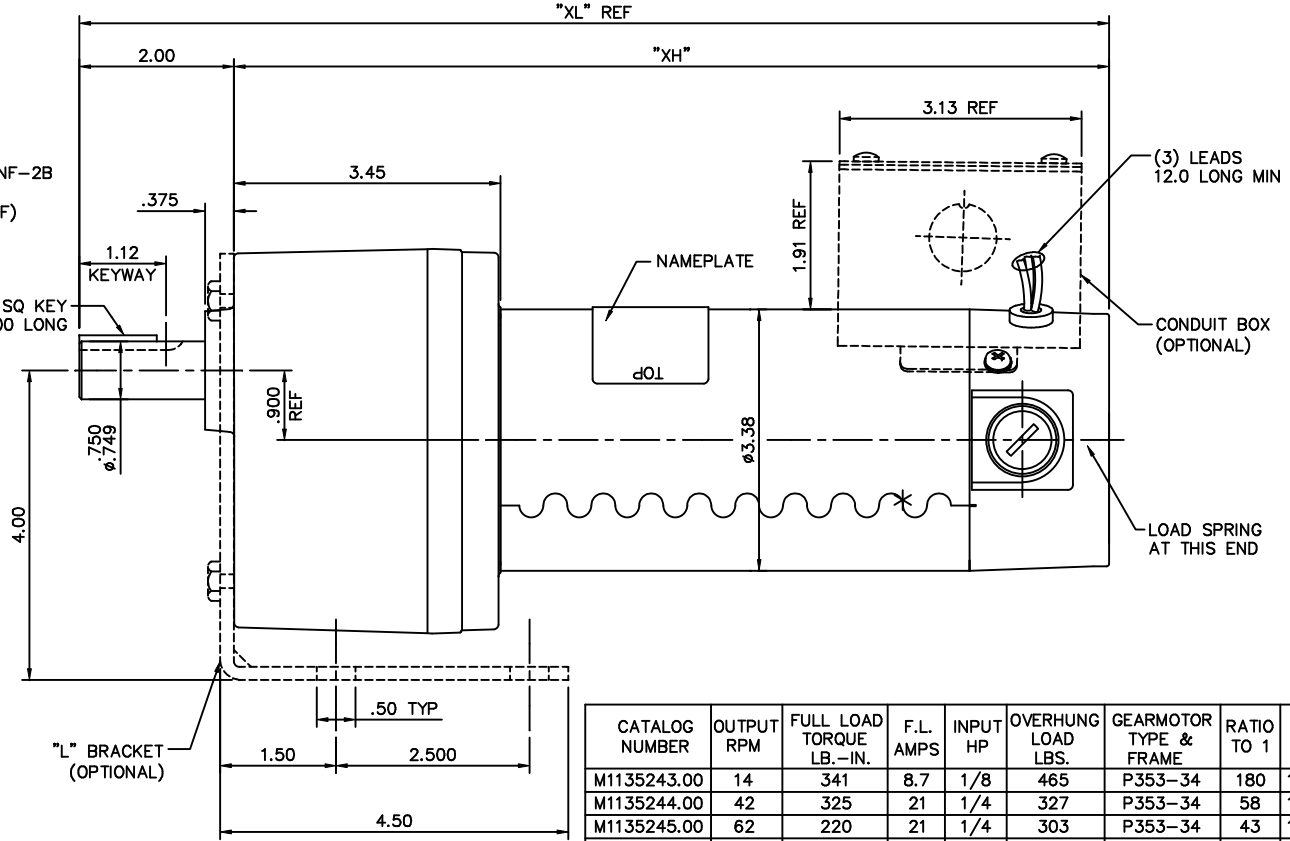


(4) 1/4-28 UNF-2B
.59 MIN. DEEP
(ø5.125 BC REF)

.19 SQ KEY
1.00 LONG



CATALOG NUMBER	OUTPUT RPM	FULL LOAD TORQUE LB.-IN.	F.L. AMPS	INPUT HP	OVERHUNG LOAD LBS.	GEARMOTOR TYPE & FRAME	RATIO TO 1	"XL"	"XH"
M1135243.00	14	341	8.7	1/8	465	P353-34	180	11.05	9.05
M1135244.00	42	325	21	1/4	327	P353-34	58	13.31	11.31
M1135245.00	62	220	21	1/4	303	P353-34	43	13.31	11.31
M1135246.00	83	155	21	1/4	267	P353-34	29	13.31	11.31

NO.	REVISION	BY & DATE	CHK	ANG	FINISH	LEESON	PREV
04	1/4-28 UNF-2B TAPS WERE .63 DEEP PER ECR81849.	RPB 12/1/03	BC	X	±.1	ELECTRIC MOTORS GEARMOTORS AND DRIVES	DRAWN IPG 1/11/01
03	ADDED ITEM # M1135246.00	IPG 1/23/01	SAD	.XX	±.03		CHK
02	ADDED ITEM # M1135245.00	IPG 1/22/01	SAD	.XXX	±.005		APPD SAD 1/11/01
01	ADDED ITEM # M1135244.00	IPG 1/17/01	SAD	.XXXX	±.0005		SCALE 5=8
TITLE OUTLINE - 34 FRAME D.C. PE350 GEARBOX - 12 V							REF M1030589.00
MATERIAL MAT'L							FMF M1135243.00
THIS DRAWING IN DESIGN AND DETAIL IS OUR PROPERTY AND MUST NOT BE USED EXCEPT IN CONNECTION WITH OUR WORK ALL RIGHTS OF DESIGN AND INVENTION ARE RESERVED THIS IS AN ELECTRONICALLY GENERATED DOCUMENT - DO NOT SCALE THIS PRINT				RFP	CAD FILE M1030807	SIZE B	DRAWING NO. M1030807.00
				DIST			REV. 04

ERROR: syntaxerror
OFFENDING COMMAND: --nostringval--

STACK:

-dictionary-
/Pscript_WinNT_Compat
-dictionary-