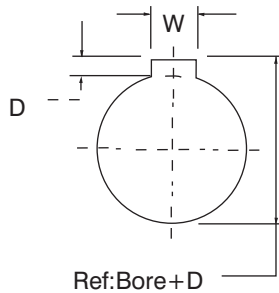




AK & BK CAST IRON SHEAVES

- Manufactured in high quality grey cast iron
- Finished bore with H7 precision
- Keyway and set screws in accordance with USAS. B. 17.1-1967
- OEM surface treatment available: paint or black phosphate - contact LEESON
- Individually packaged

V PULLEYS



ISO STANDARD METHOD
FOR MEASURING KEYSEAT
DEPTH

Depth measured at centerline.

Reference:

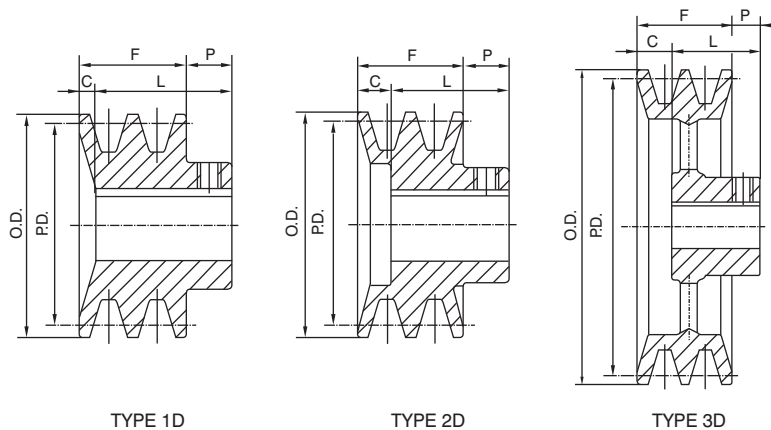
1 inch=25.4 millimeters

1 millimeter=0.3937 inches.

STANDARD KEYSEATS

Stock Bores	Keyseats	Stock Bores	Keyseats
1/2	None	1	1/4x1/8
9/16	1/8x1/16	1 1/16	1/4x1/8
5/8	3/16x3/32	1 1/8	1/4x1/8
11/16	3/16x3/32	1 3/16	1/4x1/8
3/4	3/16x3/32	1 1/4	1/4x1/8
13/16	3/16x3/32	1 3/8	1/4x1/8
7/8	3/16x3/32	1 3/8	1/4x1/8
15/16	1/4x1 1/8	1 7/16	3/8x3/16

2AK SHEAVES



V PULLEYS

2 GROOVE • A or 3L-4L BELTS

Part Number	Diameter			Type	Dimensions				Stock Bores									Wgt. Lbs.		
	O.D.	P.D. A	P.D. 3L		F	L	P	C	1/2	5/8	3/4	7/8	15/16	1	1 1/8	1 3/16	1 1/4		1 3/8	1 7/16
2AK20	2.00	1.80	1.46	1D	1 3/8	1 21/32	15/32	3/16	●	●	●									0.8
2AK21	2.15	1.90	1.56	1D	1 3/8	1 21/32	15/32	3/16	●	●	●									0.9
2AK22	2.25	2.00	1.66	1D	1 3/8	1 21/32	15/32	3/16	●	●	●	●								1.0
2AK23	2.35	2.10	1.76	1D	1 3/8	1 21/32	15/32	3/16		●	●	●		●						1.1
2AK25	2.55	2.30	1.96	1D	1 3/8	1 21/32	15/32	3/16		●	●	●		●						1.3
2AK26	2.65	2.40	2.06	1D	1 3/8	1 21/32	15/32	3/16		●	●	●		●						1.4
2AK27	2.75	2.50	2.16	1D	1 3/8	1 21/32	15/32	3/16		●	●	●		●						1.5
2AK28	2.85	2.60	2.26	1D	1 3/8	1 21/32	15/32	3/16		●	●	●		●						1.8
2AK30	3.05	2.80	2.46	1D	1 3/8	1 21/32	15/32	3/16	●	●	●	●		●	●					1.9
2AK32	3.25	3.00	2.66	1D	1 3/8	1 21/32	15/32	3/16		●	●	●		●	●					2.1
2AK34	3.45	3.20	2.86	1D	1 3/8	1 21/32	15/32	3/16		●	●	●		●	●					2.3
2AK39	3.75	3.50	3.16	2D	1 3/8	1 11/32	15/32	1/2		●	●	●		●	●					2.6
2AK41	3.95	3.70	3.36	2D	1 3/8	1 11/32	15/32	1/2		●	●	●		●	●					2.9
2AK44	4.25	4.00	3.66	2D	1 3/8	1 11/32	15/32	1/2		●	●	●		●	●					3.0
2AK46	4.45	4.20	3.86	2D	1 3/8	1 11/32	15/32	1/2		●	●	●		●	●					3.1
2AK49	4.75	4.50	4.16	2D	1 3/8	1 11/32	15/32	1/2			●	●		●	●			●		3.6
2AK51	4.95	4.70	4.36	2D	1 3/8	1 11/32	15/32	1/2			●	●		●	●			●		3.8
2AK54	5.25	5.00	4.66	3D	1 3/8	1 11/32	15/32	1/2		●	●	●		●	●			●		3.3
2AK56	5.45	5.20	4.86	3D	1 3/8	1 11/32	15/32	1/2		●	●	●		●	●			●		3.4
2AK59	5.75	5.50	5.16	3D	1 3/8	1 11/32	15/32	1/2			●	●		●	●			●		3.5
2AK61	5.95	5.70	5.36	3D	1 3/8	1 11/32	15/32	1/8			●	●		●	●			●		3.6
2AK64	6.25	5.00	5.66	3D	1 3/8	1 19/32	11/32	1/8			●	●		●	●	●		●	●	4.8
2AK74	7.25	7.00	6.66	3D	1 3/8	1 19/32	11/32	1/8			●	●		●	●	●		●	●	5.6
2AK84	8.25	8.00	7.66	3D	1 3/8	1 19/32	11/32	1/8			●	●	●	●	●	●		●	●	6.4
2AK94	9.25	9.00	8.66	3D	1 3/8	1 19/32	11/32	1/8			●	●	●	●	●	●		●	●	7.3
2AK104	10.25	10.00	9.66	3D	1 3/8	1 19/32	11/32	1/8			●	●	●	●	●	●		●	●	8.1
2AK114	11.25	11.00	10.66	3D	1 3/8	1 19/32	11/32	1/8			●	●	●	●	●	●		●	●	9.0
2AK124	12.25	12.00	11.66	3D	1 3/8	1 19/32	11/32	1/8			●	●	●	●	●	●		●	●	9.8
2AK134	13.25	13.00	12.66	3D	1 3/8	1 19/32	11/32	1/8			●	●	●	●	●	●		●	●	12.3
2AK144	14.25	14.00	13.66	3D	1 3/8	1 19/32	11/32	1/8			●	●	●	●	●	●		●	●	13.9
2AK154	15.25	15.00	14.66	3D	1 3/8	1 19/32	11/32	1/8			●	●	●	●	●	●		●	●	14.3
2AK184	18.25	18.00	17.66	3D	1 3/8	1 19/32	11/32	1/8			●	●	●	●	●	●		●	●	17.4