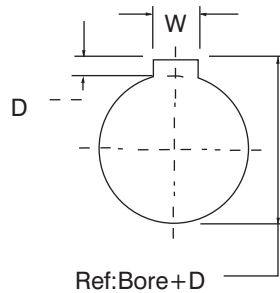




AK & BK CAST IRON SHEAVES

- Manufactured in high quality grey cast iron
- Finished bore with H7 precision
- Keyway and set screws in accordance with USAS. B. 17.1-1967
- OEM surface treatment available: paint or black phosphate - contact LEESON
- Individually packaged

V PULLEYS



ISO STANDARD METHOD
FOR MEASURING KEYSEAT
DEPTH

Depth measured at centerline.

Reference:

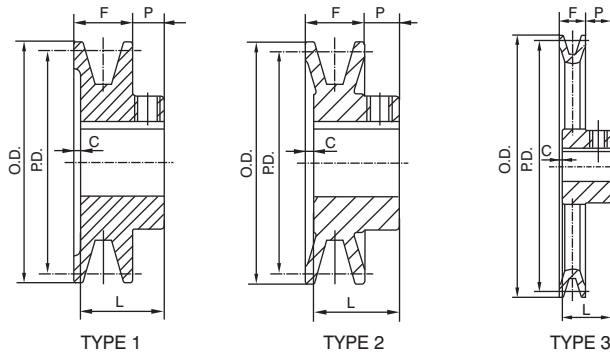
1 inch=25.4 millimeters

1 millimeter=0.3937 inches.

STANDARD KEYSEATS

Stock Bores	Keyseats	Stock Bores	Keyseats
1/2	None	1	1/4x1/8
9/16	1/8x1/16	1 1/16	1/4x1/8
5/8	3/16x3/32	1 1/8	1/4x1/8
11/16	3/16x3/32	1 3/16	1/4x1/8
3/4	3/16x3/32	1 1/4	1/4x1/8
13/16	3/16x3/32	1 3/8	1/4x1/8
7/8	3/16x3/32	1 3/8	1/4x1/8
15/16	1/4x1 1/8	1 7/16	3/8x3/16

BK SHEAVES



1 GROOVE • A, B, 4L & 5L BELTS

Part Number	Diameter			Type	Dimensions				Stock Bores											Wgt. Lbs.
	O.D.	P.D. A	P.D. B		F	L	P	C	1/2	5/8	3/4	7/8	15/16	1	1 1/8	1 3/16	1 1/4	1 3/8	1 7/16	
BK24	2.40	1.80	2.20	1	13/16	1 1/16	13/32	5/32	●	●	●									0.4
BK25	2.50	1.90	2.30	1	13/16	1 1/16	13/32	5/32	●	●	●									0.5
BK26	2.60	2.00	2.40	1	13/16	1 1/16	13/32	5/32	●	●	●	●								0.6
BK27	2.70	2.10	2.50	2	13/16	1 1/16	13/32	5/32	●	●	●	●								0.7
BK28	2.95	2.20	2.60	2	13/16	1 1/16	13/32	5/32	●	●	●	●								0.8
BK30	3.15	2.40	2.80	2	13/16	1 1/16	13/32	5/32	●	●	●	●								0.9
BK32	3.35	2.60	3.00	2	13/16	1 1/16	13/32	5/32	●	●	●	●								1.0
BK34	3.55	2.80	3.20	2	7/8	1 5/32	13/32	1/8	●	●	●	●		●		●				1.3
BK36	3.75	3.00	3.40	2	7/8	1 5/32	13/32	1/8	●	●	●	●		●		●				1.5
BK40	3.95	3.20	3.60	2	7/8	1 5/32	13/32	1/8	●	●	●	●		●		●				1.6
BK45	4.25	3.50	3.90	2	7/8	1 5/32	13/32	1/8	●	●	●	●		●		●				1.8
BK47	4.45	3.70	4.10	2	7/8	1 5/32	13/32	1/8	●	●	●	●		●		●				1.9
BK50	4.75	4.00	4.40	3	7/8	1 5/32	13/32	1/8	●	●	●	●	●		●		●			2.0
BK52	4.95	4.20	4.60	3	7/8	1 5/32	13/32	1/8	●	●	●	●		●		●				2.1
BK55	5.25	4.50	4.90	3	7/8	1 5/32	13/32	1/8	●	●	●	●		●		●				2.2
BK57	5.45	4.70	5.10	3	7/8	1 5/32	13/32	1/8		●	●	●	●	●		●				2.3
BK60	5.75	5.00	5.40	3	7/8	1 5/32	13/32	1/8	●	●	●	●		●		●				2.4
BK62	5.95	5.20	5.60	3	7/8	1 5/32	13/32	1/8	●	●	●	●	●		●		●			2.5
BK65	6.25	5.50	5.90	3	7/8	1 5/32	13/32	1/8		●	●	●	●		●		●			2.7
BK67	6.45	5.70	6.10	3	7/8	1 5/32	13/32	1/8		●	●	●	●		●		●			2.8
BK70	6.75	6.00	6.40	3	7/8	1 15/32	2 1/32*	1/16		●	●	●	●	●		●			●	3.3
BK72	6.95	6.20	6.60	3	7/8	1 15/32	2 1/32	1/16		●	●	●	●	●		●			●	3.9
BK75	7.25	6.50	6.90	3	7/8	1 15/32	2 1/32	1/16		●	●	●	●	●		●			●	4.0
BK77	7.45	6.70	7.10	3	7/8	1 15/32	2 1/32	1/16		●	●	●	●	●		●			●	4.1
BK80	7.75	7.00	7.40	3	7/8	1 15/32	2 1/32	1/16		●	●	●	●	●		●			●	4.4
BK85	8.25	7.50	7.90	3	7/8	1 15/32	2 1/32	1/16			●	●	●	●		●			●	5.0
BK90	8.75	8.00	8.40	3	7/8	1 15/32	2 1/32	1/16			●	●	●	●		●			●	5.2
BK95	9.25	8.50	8.90	3	7/8	1 15/32	2 1/32	1/16			●	●	●	●		●			●	5.4
BK100	9.75	9.00	9.40	3	7/8	1 15/32	2 1/32	1/16			●	●	●	●		●			●	5.6
BK105	10.25	9.50	9.90	3	7/8	1 15/32	2 1/32	1/16			●	●	●	●		●			●	5.8
BK110	10.75	10.00	10.40	3	7/8	1 15/32	2 1/32	1/16			●	●	●	●		●			●	6.4
BK115	11.25	10.50	10.90	3	7/8	1 15/32	2 1/32	1/16			●	●	●	●		●			●	6.9
BK120	11.75	11.00	11.40	3	7/8	1 15/32	2 1/32	1/16			●	●	●	●		●			●	7.4
BK130	12.75	12.00	12.40	3	7/8	1 15/32	2 1/32	1/16			●	●	●	●		●			●	8.4
BK140	13.75	13.00	13.40	3	7/8	1 15/32	2 1/32	1/16			●	●	●	●		●			●	9.4
BK160	15.75	15.00	15.40	3	7/8	1 15/32	2 1/32	1/16				●	●	●		●	●		●	12.4
BK190	18.75	18.00	18.40	3	7/8	1 15/32	2 1/32	1/16					●	●		●	●		●	13.4

*P=13/32 and C=1/8 for 1" Bore and smaller

V PULLEYS